

# COPPER & CRITICAL METALS FOR A SUSTAINABLE FUTURE

**April 2026**  
**INVESTOR PRESENTATION**



# FORWARD LOOKING STATEMENTS

**TERMS OF USE AND DISCLAIMER** – This presentation is being provided for the sole purpose of providing the recipients with background information about Barksdale Resources. (“Barksdale Resources” or the “Company”). Barksdale Resources has made reasonable efforts to ensure that the information contained in this presentation is accurate as of the date hereof, however, there may be inadvertent or unintentional errors. No representation, warranty or guarantee, express or implied, is made as to the fairness, accuracy, completeness or correctness of information contained in this presentation, including the accuracy, likelihood of achievement or reasonableness of any forecasts, prospects, results or statements in relation to future matters contained in this presentation. The views and information provided herein are based on a number of estimates and assumptions that are subject to significant exploration, business, economic, regulatory and competitive uncertainties. See “Forward Looking Statements” below. Barksdale Resources is not liable to any recipient or third party for the use of or reliance on the information contained in this presentation.

This presentation provides information in summary form only, is not intended to be complete and does not constitute an offer to sell or the solicitation of an offer to buy any security. It is not intended to be relied upon as advice to investors or potential investors and does not constitute a personal recommendation or take into account the investment objectives, financial situation or needs of any particular investor. Barksdale Resources is not acting as agent or advisor and encourages the use of independent consultants, as necessary, prior to entering into transactions.

**FORWARD LOOKING STATEMENTS** – Except for the statements of historical fact contained herein, the information presented constitutes “forward-looking statements” within the meaning of Canadian and United States securities and other laws. Often, but not always, forward-looking statements can be identified by the use of words such as “plans”, “expects”, “is expected”, “budget”, “scheduled”, “estimates”, “forecasts”, “intends”, “aims”, “anticipates”, “will”, “projects”, or “believes” or variations (including negative variations) of such words and phrases, or statements that certain actions, events, results or conditions “may”, “could”, “would”, “might” or “will” be taken, occur or be achieved. By their very nature, forward-looking statements are subject to numerous risks and uncertainties, some of which are beyond our control. Forward looking statements are based on the opinions and estimates of management at the date the statements are made, as well as a number of assumptions made by, and information currently available to, Barksdale Resources concerning, among other things, anticipated geological formations, potential mineralization, future plans for exploration and/or development, potential future production, drilling exposure, and exploration budgets and timing of expenditures, all of which involve known and unknown risks, uncertainties and other factors which may cause the actual results, performance or achievement of Barksdale Resources to be materially different from any future results, performance or achievements expressed or implied by such forward-looking statements. Factors that could cause actual results to vary materially from results anticipated by such forward looking statements include, among others, risks related to the Company’s limited operating history, current and future exploration activities, the Company’s need for significant additional capital, changes in government legislation, changes in ownership interest in a project, conclusions of economic evaluations, changes in project parameters as plans continue to be refined, future prices and volatility of zinc, silver and other metals, environmental risks and hazards, infrastructure and/or operating costs, labor and employment matters, availability of financing, permitting availability and timing, government regulation, changes in equity markets, the uncertainties involved in interpreting geological data, the validity of the Company’s title to its properties, increases in costs and exchange rate fluctuations, the Company’s dependence on key personnel. There are no known resources or reserves on the Sunnyside Project and the Company’s proposed exploration programs are exploratory searches for commercial quantities of ore. In addition, the close proximity of the Sunnyside Project to Arizona Mining’s Taylor deposit is not necessarily indicative of the zinc and other mineralization present on the Sunnyside Project

Although Barksdale Resources has attempted to identify important factors that could cause actual results to differ materially, there may be other factors that cause results not to be as anticipated, estimated or intended. There can be no assurance that such statements will prove to be accurate as actual results and future events could differ materially from those anticipated in such statements. Barksdale Resources disclaims any intention or obligation to update or revise any forward-looking statements, whether as a result of new information, future events or otherwise, other than as required by applicable law. Accordingly, readers should not place undue reliance on forward-looking statements and trading in securities of Barksdale Resources should be considered highly speculative. All scientific and technical information contained in this presentation has been prepared by, or under the supervision of, Lewis Teal, project manager and geological consultant for Barksdale Resources(CPG-6932) and a qualified person as defined by NI 43-101, Standards of Disclosure for Mineral Projects.

Historical assays contained in this Presentation have not been confirmed by Barksdale Resources, are of uncertain QA/QC standards and should not be relied upon. They are presented as a guide to future exploration.

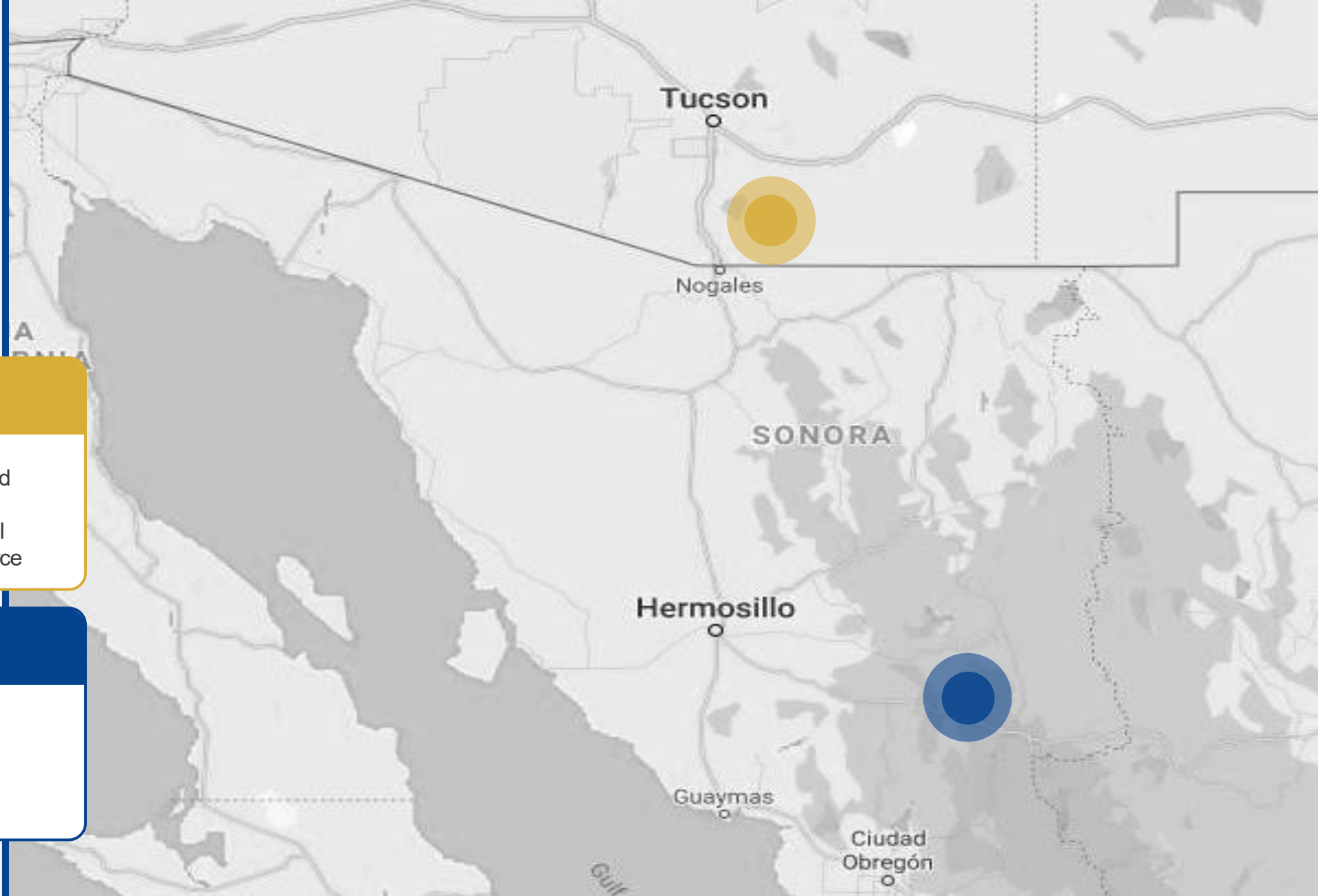
# BARKSDALE: FOCUSED ON EXPLORATION IN TWO DISTINCTIVE DISTRICTS

## Patagonia District, Arizona

- USFS PoO and FONSI Approved
- Copper Porphyry System
- Huge multi-deposit type potential
- Neighbor to World Class Resource

## San Javier District, Mexico

- Robust PEA Economics
- NI 43-101 compliant Resources
- 60% to 85% Recoveries
- Undefined GOLD endowment



Visit [www.barksdaleresources.com](http://www.barksdaleresources.com) or SEDAR + to view the company's two technical reports: Technical Report on the Sunnyside Project, Santa Cruz County, Arizona USA By APEX Geoscience Ltd, revised Nov. 10, 2017. And Preliminary Economic Assessment Study for San Javier Property, Sonora Mexico, prepared by Tetra Tech Canada Inc., January 2, 2024

# OUR PROJECTS



## SUNNYSIDE PROJECT

The Sunnyside Property is held by Arizona Standard, a 51%-49% joint venture between Barksdale Resources and Great Basin Metals. The planned 2026 Phase II program will increase Barksdale's ownership to 67.5%.

Historical drill intercepts on the Sunnyside property\*:

- CRD: 17-meters of 17% Zn+Pb, 337 g/t Ag, 1.3% Cu
- CRD: 38-meters of 15% Zn+Pb, 229 g/t Ag, 0.2% Cu
- Porphyry: 415-meters of 0.36% Cu

## SAN JAVIER PROJECT

Advanced, 100% owned Copper-Gold deposit 1.5 hours by paved road east of Hermosillo, Sonora, Mexico.

Twelve concessions totaling 1,184 hectares

- Drilled by Barksdale in 2021
- Issued a NI 43-101 compliant PEA in 2024
- M&I Resource of 70.1 M tonnes containing 419 million pounds of copper within a \$4.00/lb Cu pit shell.
- Gold resource estimation not included in PEA.\*\*

NOTES: Historical drilling at Sunnyside was completed prior to the implementation of NI 43-101 and has not been verified by a "qualified person" and therefore should not be relied upon. Intercepts are presented to provide an indication of the possible mineralization within the Sunnyside Property and as a guide to future exploration. \*\* See appendix for summary information or the Company's 2024 NI 43-101 technical report on SEDAR for detailed information.

# CAPITAL STRUCTURE

As of March 20, 2026. All prices listed in CAD.

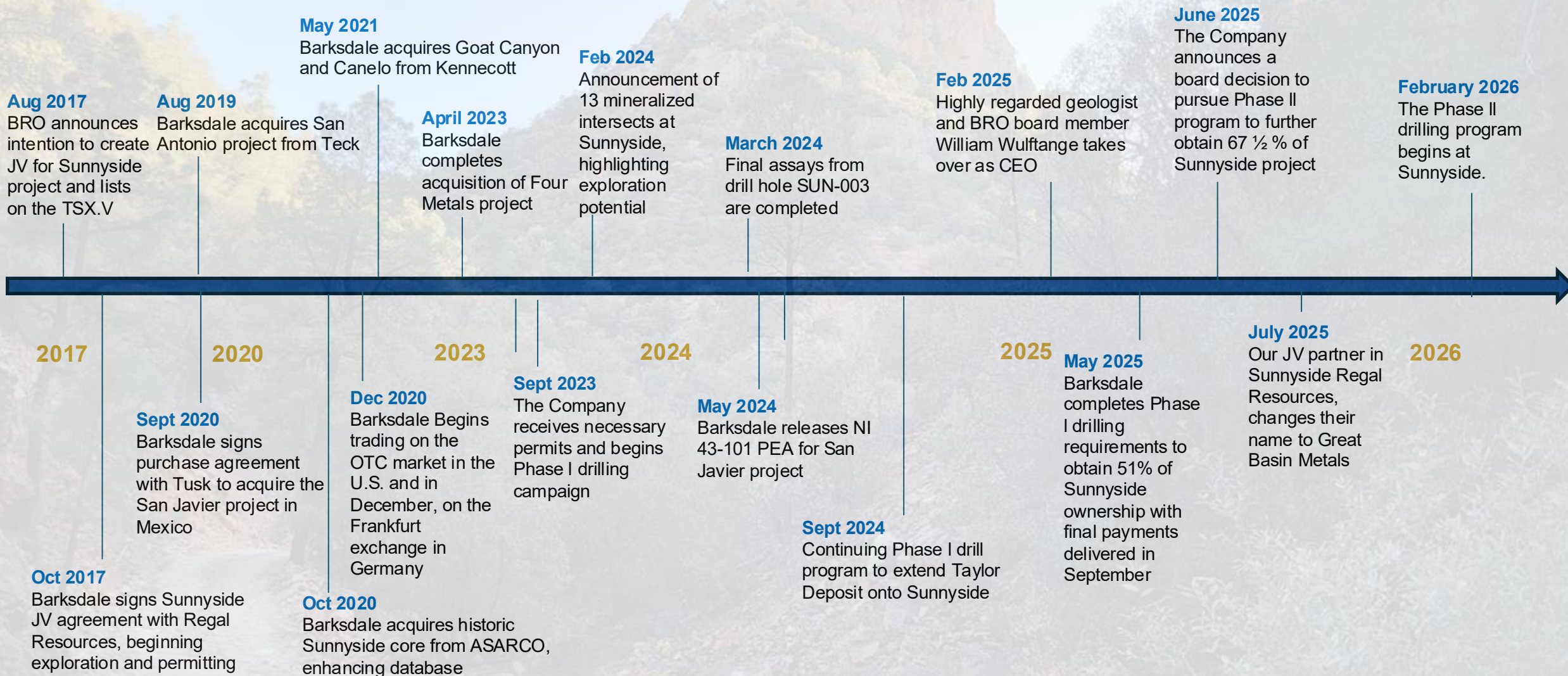
30 DAY SHARE PRICE RANGE	<b>\$0.12 – \$0.19</b>
SHARES OUTSTANDING	<b>218,479,236</b>
OPTIONS	<b>13,330,655</b>
WARRANTS	<b>102,156,070</b>
FULLY DILUTED	<b>333,965,961</b>
MARKET CAP	<b>\$28.4 million</b>
CASH*	<b>\$4.7 million</b>
CONVERTIBLE DEBT Matures Dec. 31, 2028 / Conv Price - \$0.12	<b>\$4.5 million</b>

\*As of the quarter end, 12/31/2025

## TOP SHAREHOLDERS

- Crescat Capital
- Delbrook Capital Advisors
- Eric Sprott
- Teck Resources
- Osisko Dev Corp
- US Global Investors
- Commodity Discovery Fund
- Tusk (private)

# BARKSDALE TIMELINE



# BARKSDALE LEADERSHIP TEAM

## WILLIAM WULFTANGE

### CEO and Director

William began his career in Nevada as an exploration geologist contributing to the discovery of the world class Paradise Peak Mine in 1983. During the following 38 years, William contributed to the discovery, development and production of highly successful precious metal mines including the El Peñón mine in Chile and the Cerro Negro project, now a mine, in Argentina. He has critical experience in precious metal and copper project evaluations and has acted as a Qualified Person for resource and reserve reporting for Meridian Gold, Andean Resources, and Yamana Gold. He is a past President of the SEG Foundation and currently serves within the foundation on a volunteer basis.

## ALAN ROBERTS

### VP Exploration & QP

A seasoned professional with over three decades of experience in mineral exploration and mining. He holds a Bachelor of Science in Geology from Goldsmiths, University of London (1989) and a Master of Science in Mineral Exploration and Geophysics from Imperial College London, Royal School of Mines (1992).

## MICHAEL WALDKIRCH, CPA

### CFO

A Certified Public Accountant with extensive experience providing a variety of financial and business consultancy services to public and private companies since 1998.

## BRAD NORLING

### Senior Permitting Consultant

Over 27 years experience providing biological, permitting, regulatory compliance, and environmental assessment services for the natural resource and renewals industries.

## JEFF O'NEILL

### Special Advisor

Jeff is the owner of JMO Enterprises and a former board member of Barksdale.

## Board of Directors

### DARREN BLASUTTI

#### Chairman

EVP Minera Alamos  
President, Mexico, Americas Gold and Silver  
Former Sr. VP Barrick

### QUINTON HENNIGH

#### Director

President of San Cristobal Mining and holds a Ph.D. in Geology.

### PETER McRAE

#### Director

SVP Corporate Affairs at Americas Gold and Silver

### CHRISTINA MCCARTHY

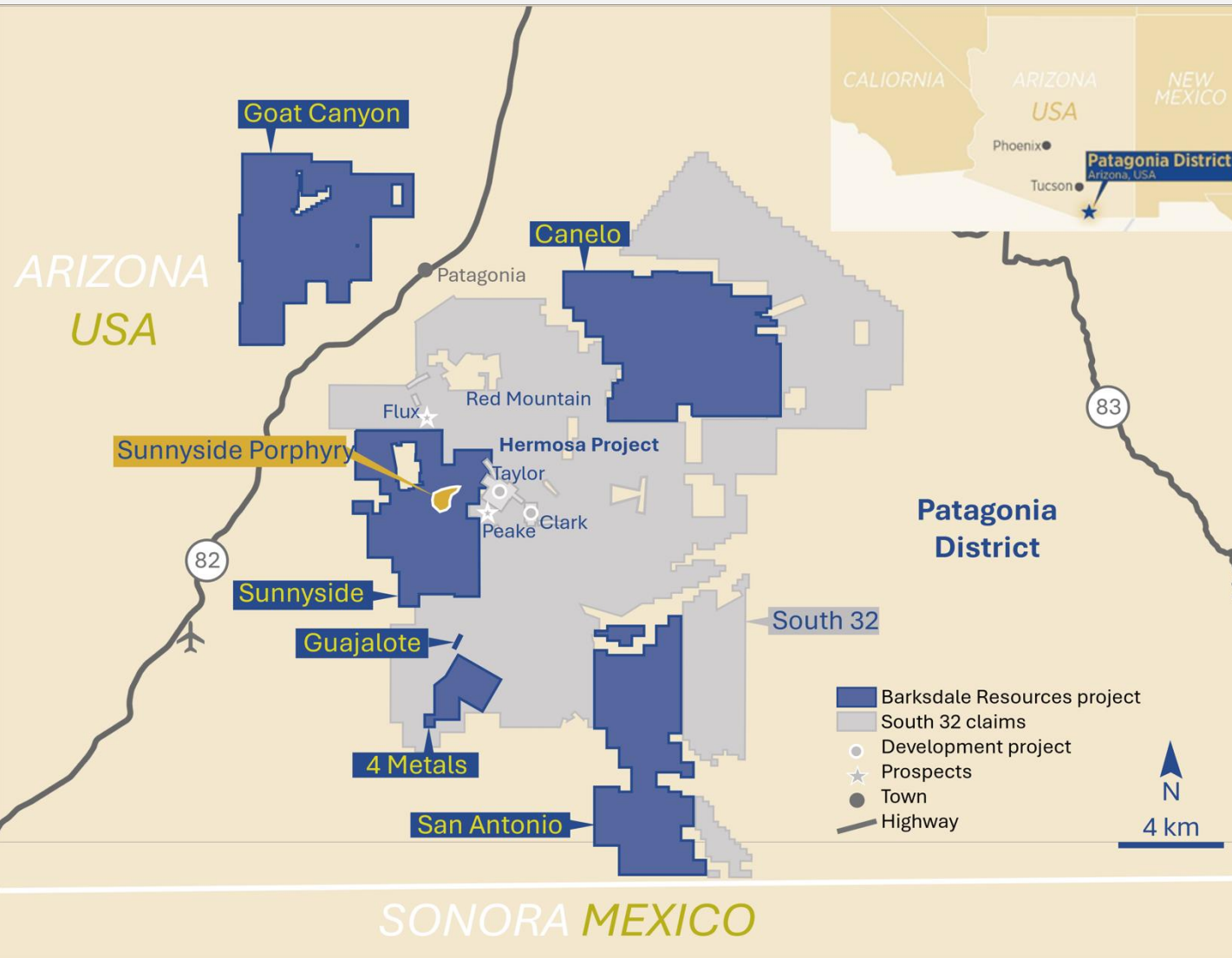
#### Director

Geologist, founder, former CEO and board member.

### WILLIAM WULFTANGE

#### Director

# BARKSDALE ARIZONA HOLDINGS



## SUNNYSIDE – 51%, plan to 67.5%

- Downdip extensions of South 32's Taylor and Peake deposits, *but that's not all....*
- Near surface chalcocite deposits
- Porphyry style Cu and Au
- 286 unpatented claims, 5,223.1 acres
- Earn-in up to 67.5%

## CANELO and GOAT CANYON - 100%

- Former Kennecott/Rio Tinto property
- Early-stage Cu porphyry and CRD/Skarn projects
- 433 federal mining claims/8,700 acres
- 314 federal mining claims/6,400 acres

## SAN ANTONIO - 100%

- Southern ext. of Harshaw Creek fault system
- Copper Porphyry style system
- Teck retains a 1.5% NSR and FROR
- 315 unpatented claims, 6,300 acres

## FOUR METALS – 100%

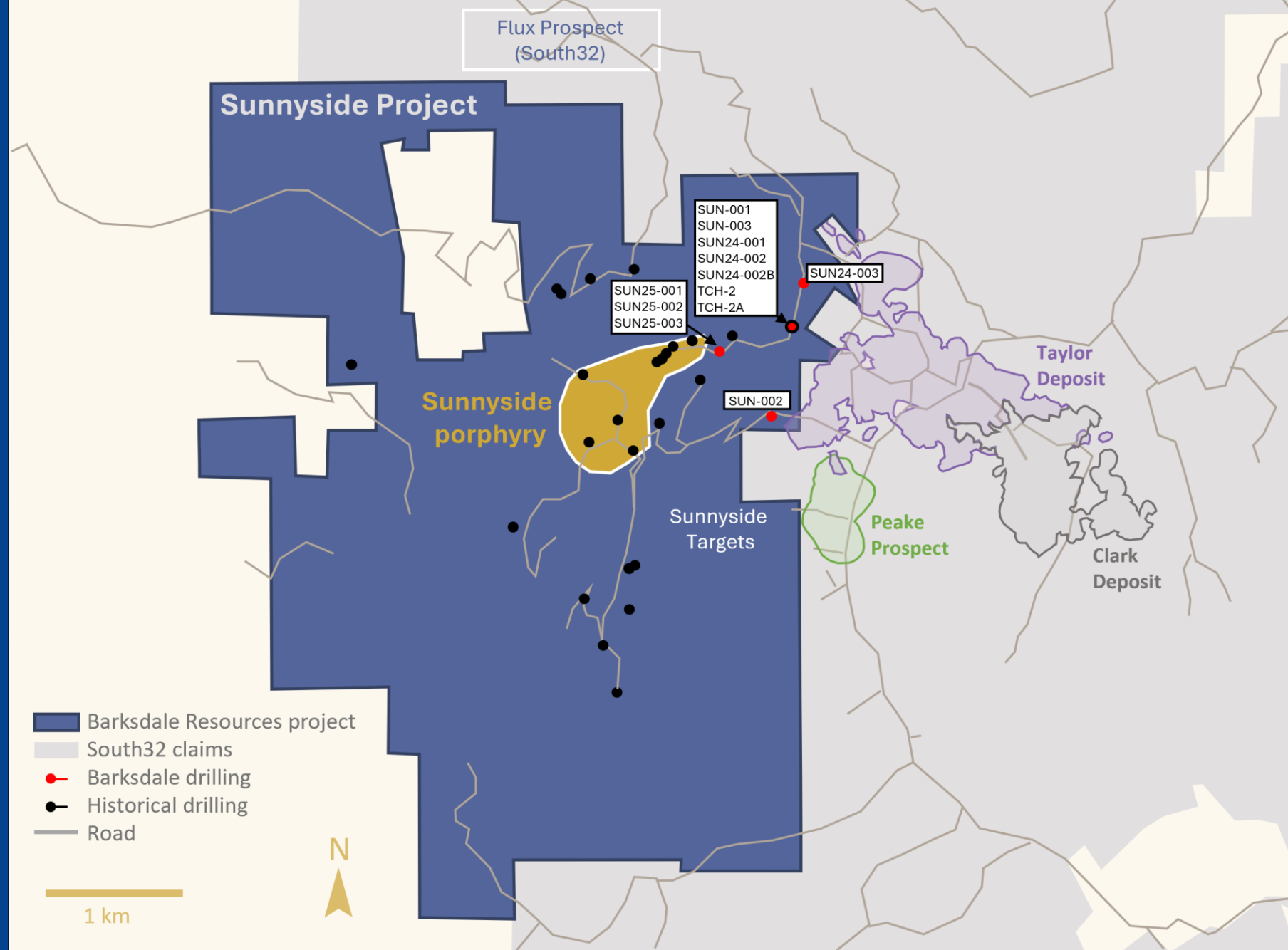
- Breccia pipes and buried porphyry-style mineralization
- 40 unpatented claims, 760 acres

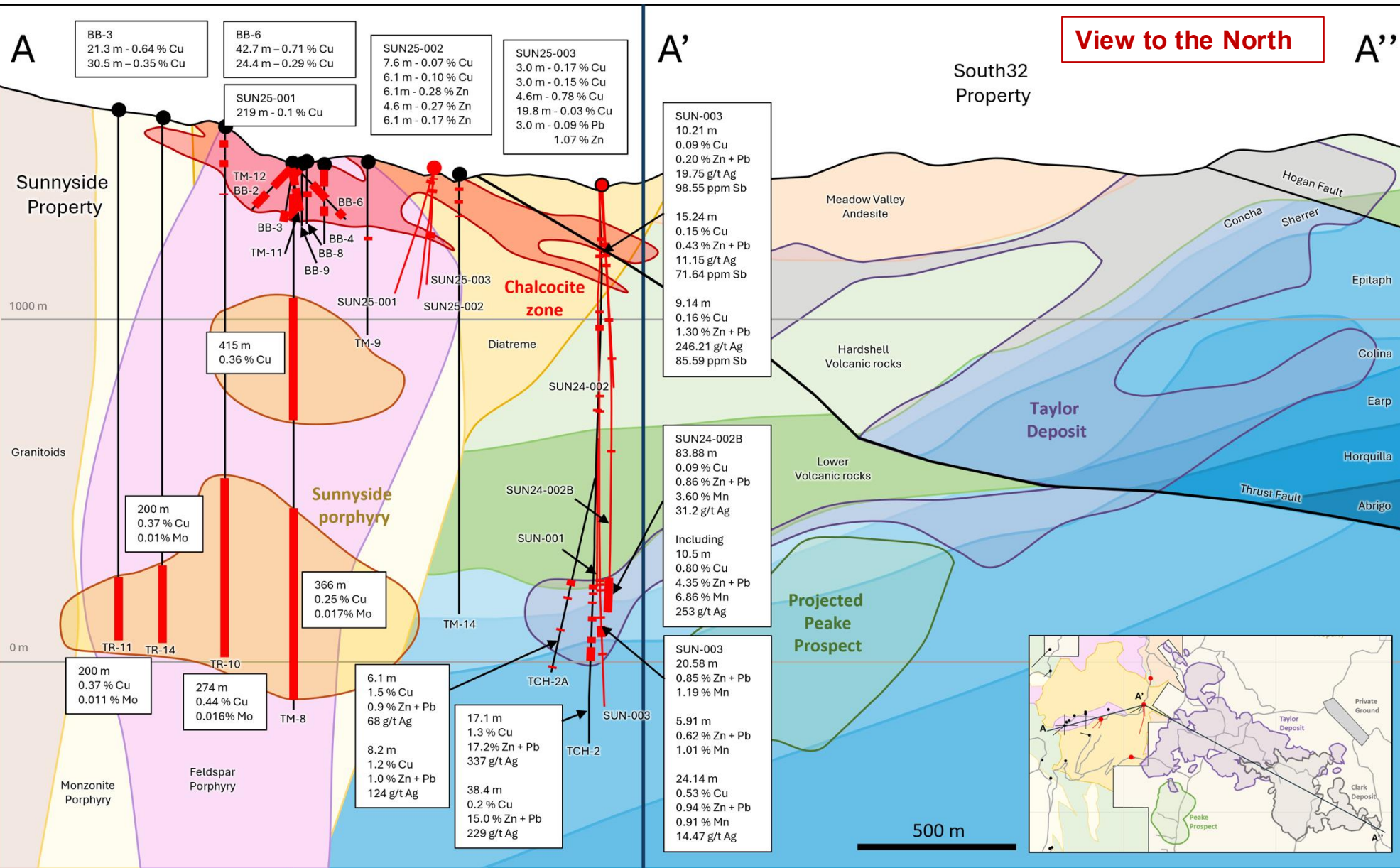
## GUAJALOTE – 100%

- Patented mining claim

# ONE SYSTEM, TWO PROPERTIES

- The SUNNYSIDE PROJECT borders South32's Hermosa project on the North, South and East claim boundaries
- The HEAT ENGINE responsible for mineralization at Sunnyside and Hermosa is located on the SUNNYSIDE PROJECT
- BRO exploration confirmed the *extension of the Taylor Deposit onto the Sunnyside Project* in DH SUN24-002B
- The BRO Phase II drill program will focus on Cu, Zn, Ag and Au targets, including near surface Chalcocite zones, shallow vein and breccia extensions and fracture study anomalies.





# ONE SYSTEM, MULTIPLE DISCOVERIES

SUNNYSIDE TARGETS

CHALCOCITE MANTO

UPPER PORPHYRY

SUNNYSIDE PORPHYRY

PEAKE EXTENSION

TAYLOR EXTENSION

Note: Initial drilling at Sunnyside prior to Barksdale Resources was completed before the implementation of NI 43-101 standards and has not been verified by a "qualified person" and therefore should not be relied upon. Intercepts are presented to provide an indication of the possible mineralization within the Sunnyside property.

# SOUTH32's HERMOSA (Our Sunnyside Neighbor)

## ~US\$4 Billion

### Acquisition and Construction

- Acquired for \$1.7B in 2018
- **H2 2027 Initial Production**
- 2030 Steady State Production

## 28 Year

### Mine Life

- 65Mt reserve grading 4.35% Zinc, 4.9% Lead and 82 g/t Silver
- Covers first 19 years of mine life
- 153 million tonnes resource grading 3.53% Zinc, 3.83% Lead and 77 g/t Silver

## 4.3Mtpa

### Annual Milling Capacity

- Production: 114kt zinc; 142kt lead; 7.4moz silver annually

## US\$0.16/lb

### All-In Sustaining Costs for Zinc (After Credits)

- First quartile cash costs



# 2026 PHASE II STRATEGY



To complete a 25,000-foot RC drill program testing near surface targets and to secure 67 ½% ownership of Sunnyside.

## **Targets include:**

- **Hypogene Chalcocite targets and mid-level Porphyry mineralization**
- **Near surface Fracture Study Cu-Au, Au and Ag-Pb-Zn targets**
- **Near surface CSAMT and NSAMT geophysics targets**
- **Near surface extensions for the World's Fair structure near Flux Canyon**

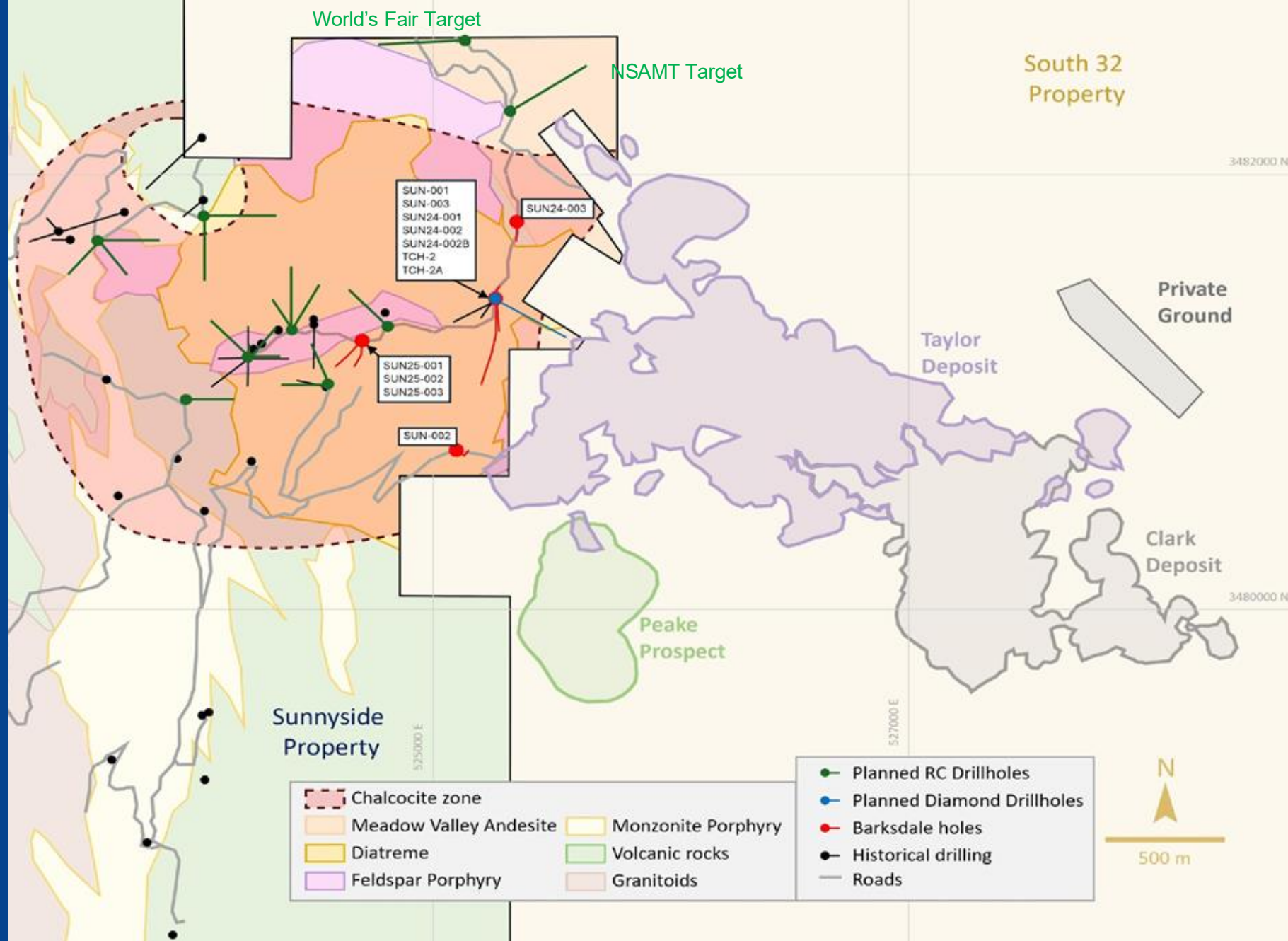
To be followed by a diamond drill program to define the SOUTH32 Peake deposit on the Sunnyside property.

# PHASE II TARGETS (Current)

## Chalcocite Targets

Aerial view of the extensive surface and near surface presence (dashed outline) of Chalcocite (Cu<sub>2</sub>S) recognized by ASARCO, Kerr McGee and others in historical exploration programs.

BRO plans a series of holes to confirm, extend and infill the central and other occurrences.



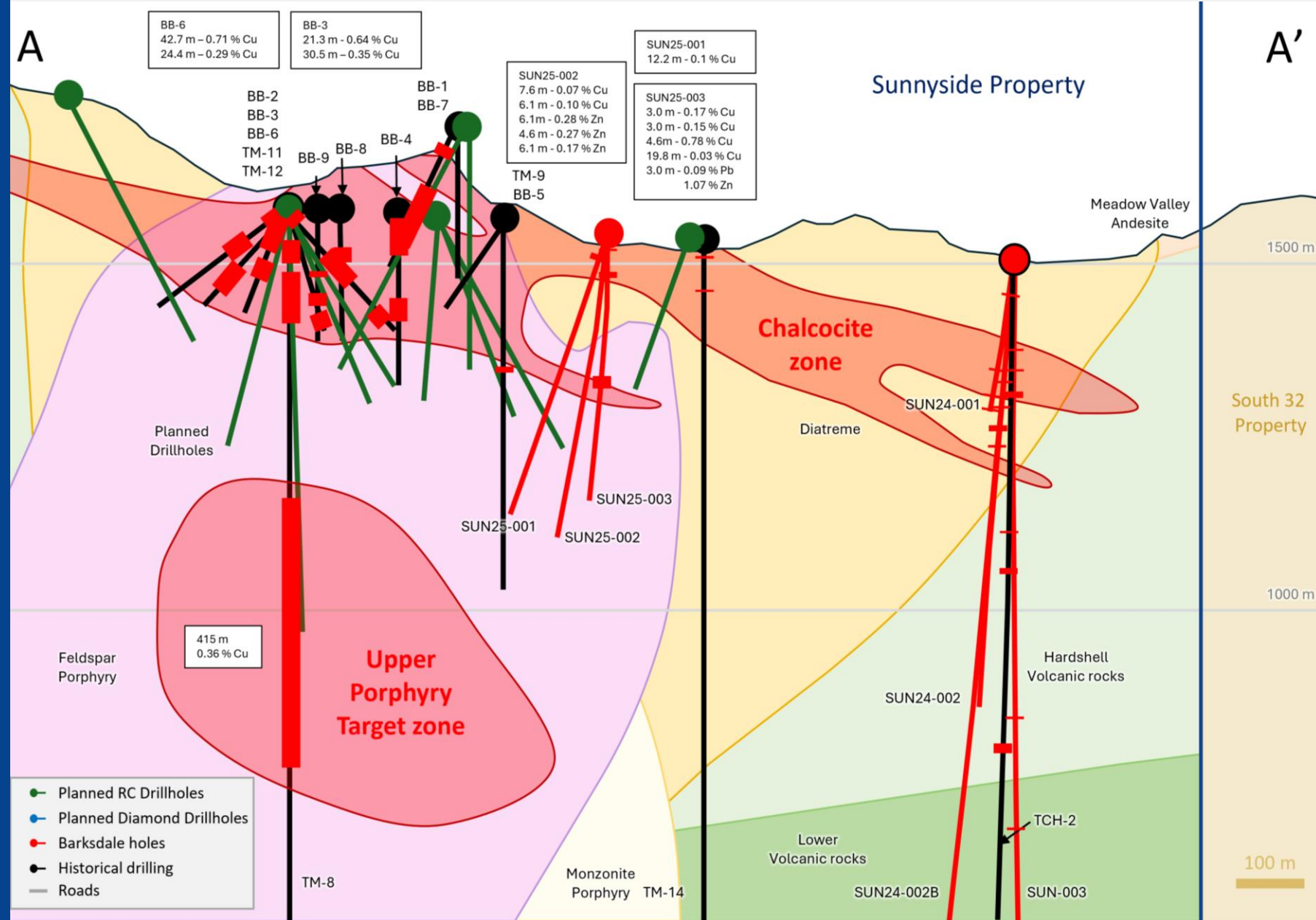
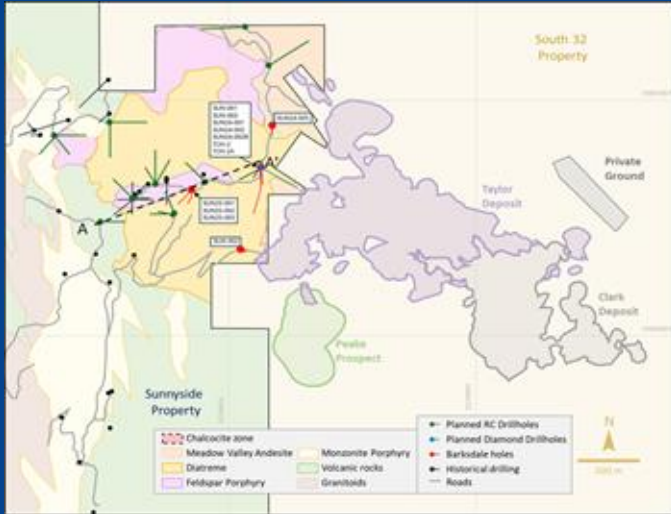
# PHASE II TARGETS (Current)

## Chalcocite Target Infill

- Follow up ASARCO recommendations to infill 'BB' Holes.

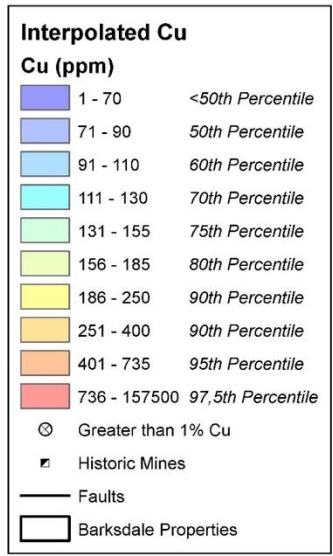
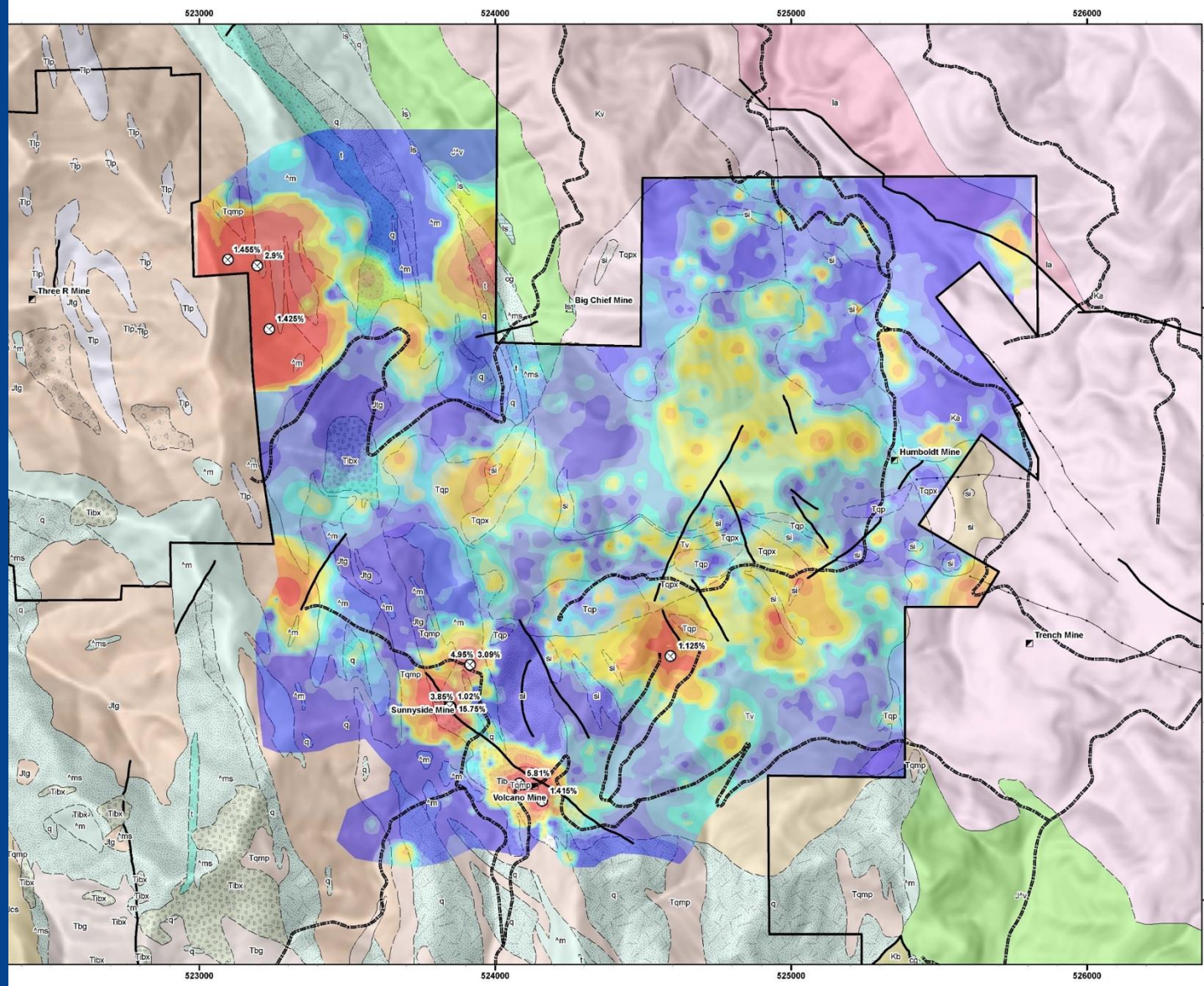
## Upper Porphyry Target

- Drill 'deeper' hole(s) from the BB Platforms to test mineralization in the upper porphyry.



# PHASE II TARGETS (Current)

## FRACTURE STUDY COPPER TARGETS

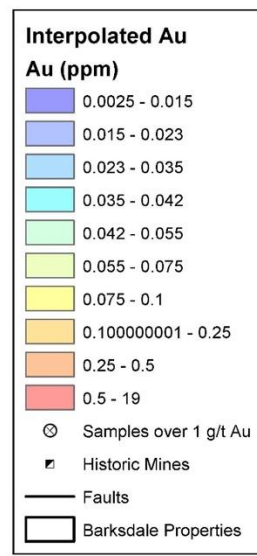
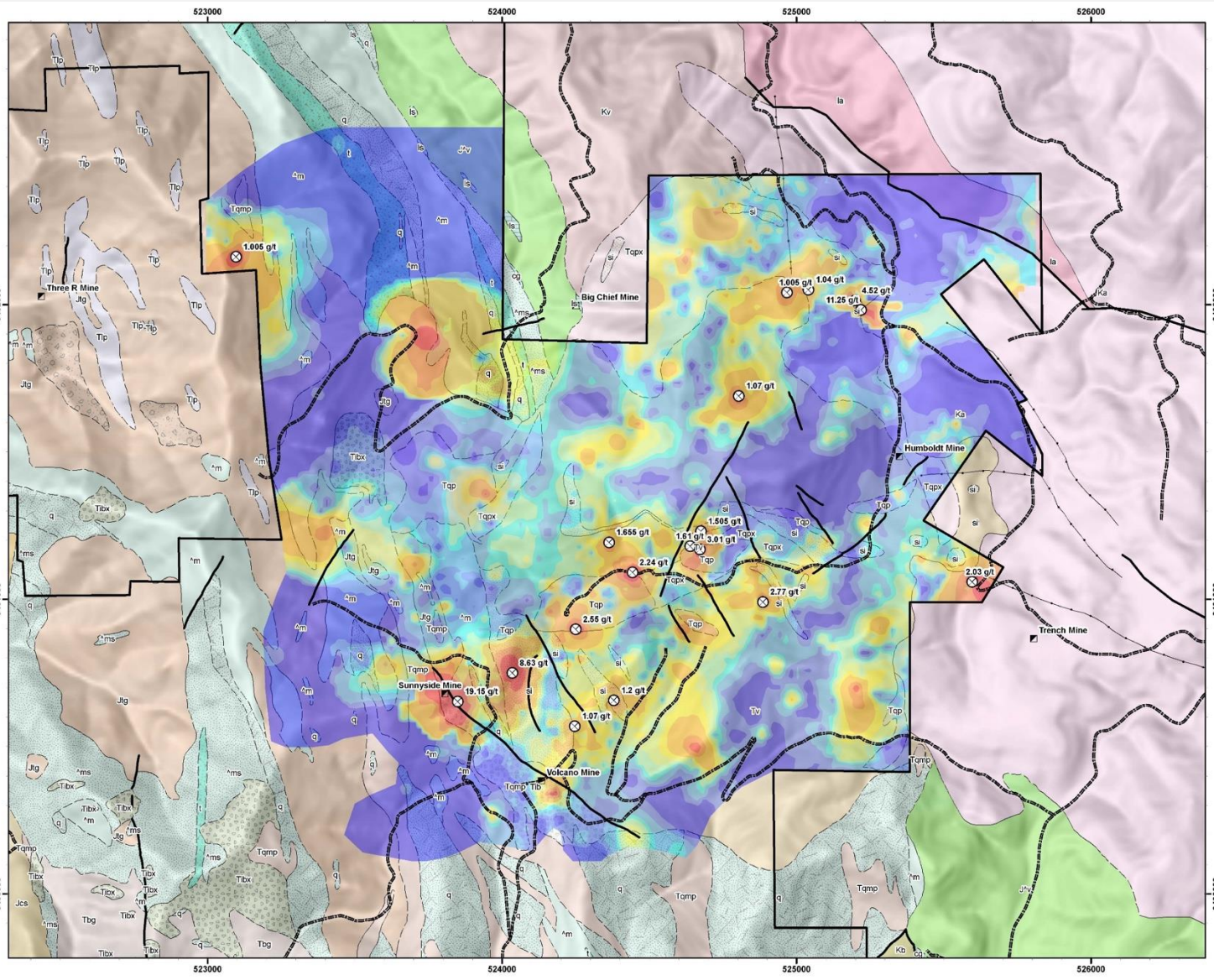


Coordinate System: NAD 1927 UTM Zone 12N  
 Projection: Transverse Mercator  
 Datum: North American 1927  
 Units: Meter

1:10,000  
 1 inch = 833.33 feet  
 1 cm = 100 meters

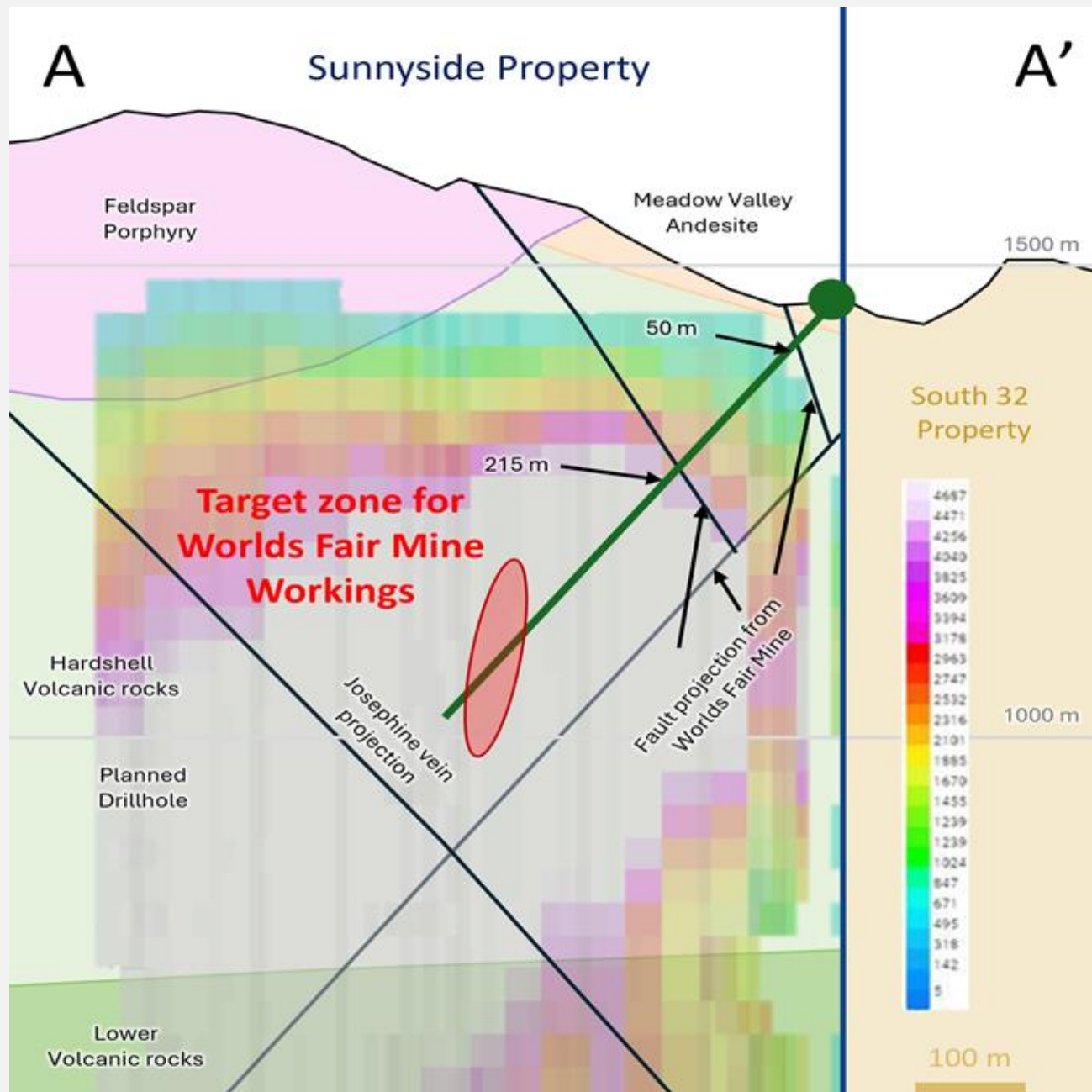
# PHASE II TARGETS (CURRENT)

## FRACTURE STUDY GOLD TARGETS



Coordinate System: NAD 1927 UTM Zone 12N  
 Projection: Transverse Mercator  
 Datum: North American 1927  
 Units: Meter

1:10,000  
 1 inch = 833.33 feet  
 1 cm = 100 meters



## PHASE II TARGETS (Shallow)

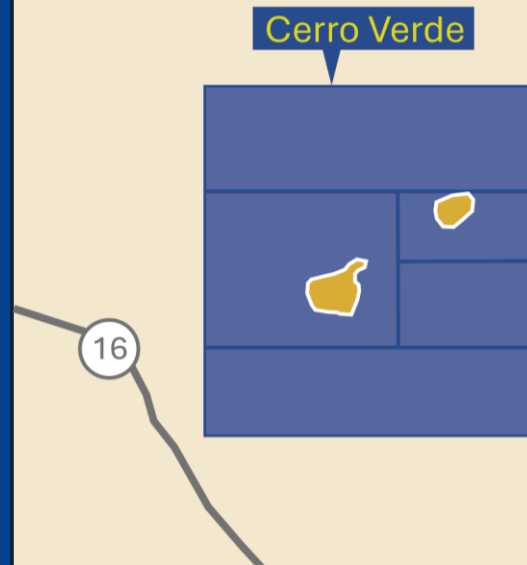
- Shallow NSAMT geophysical target
- Surface Gold and Lead anomaly over the projection of various vein-bearing structures
- Potential for mineralized breccia pipes, porphyry and epithermal veins



# BARKSDALE MEXICO HOLDINGS

## SAN JAVIER PROJECT

- 140 km/87 mi southeast of Hermosillo in Mexico state of Sonora
- 12 mining concessions with a mining claim area of ~1,184 hectares
- Area features development ready infrastructure
- NI 43-101 PEA on project

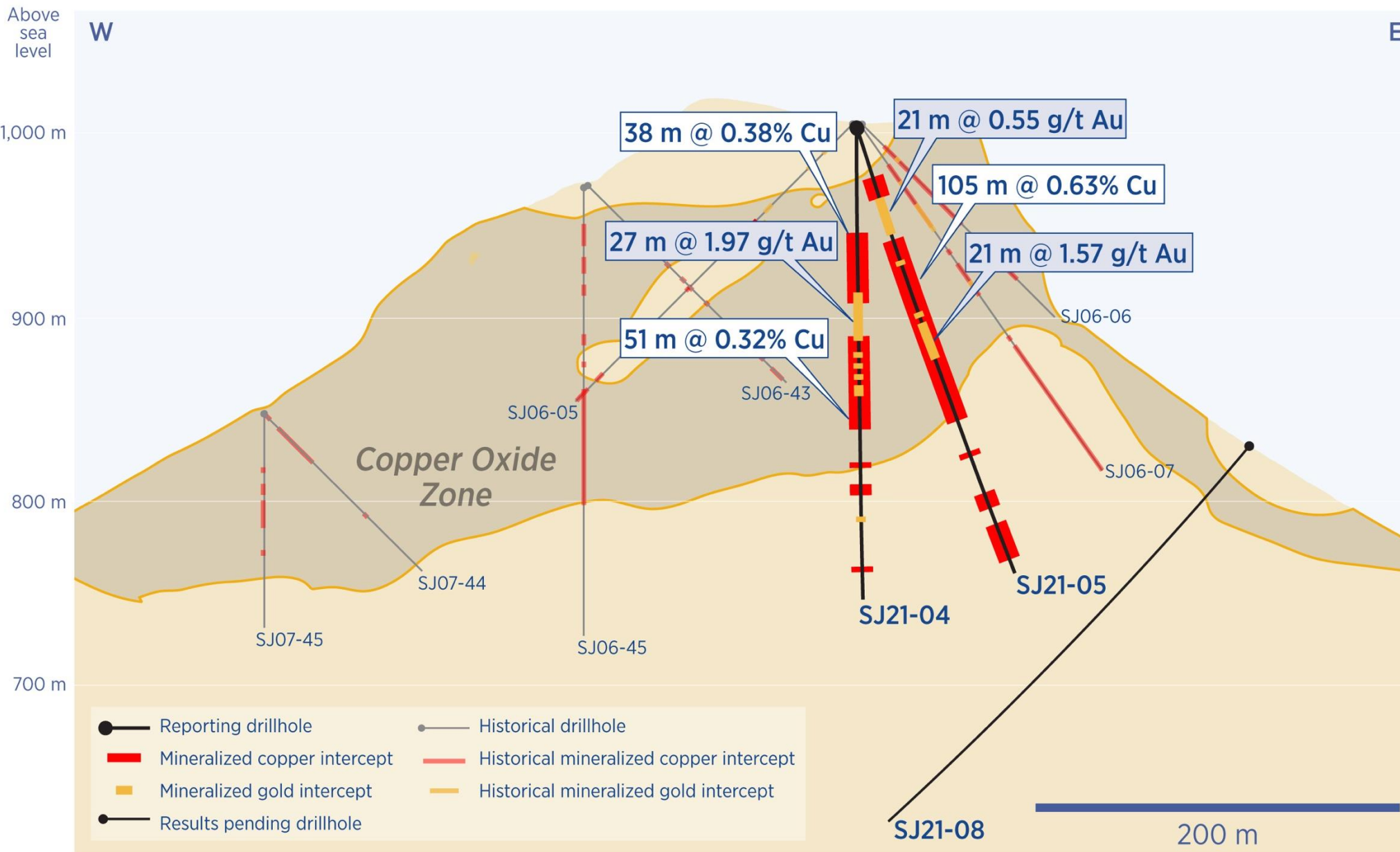


## SAN JAVIER MEXICO



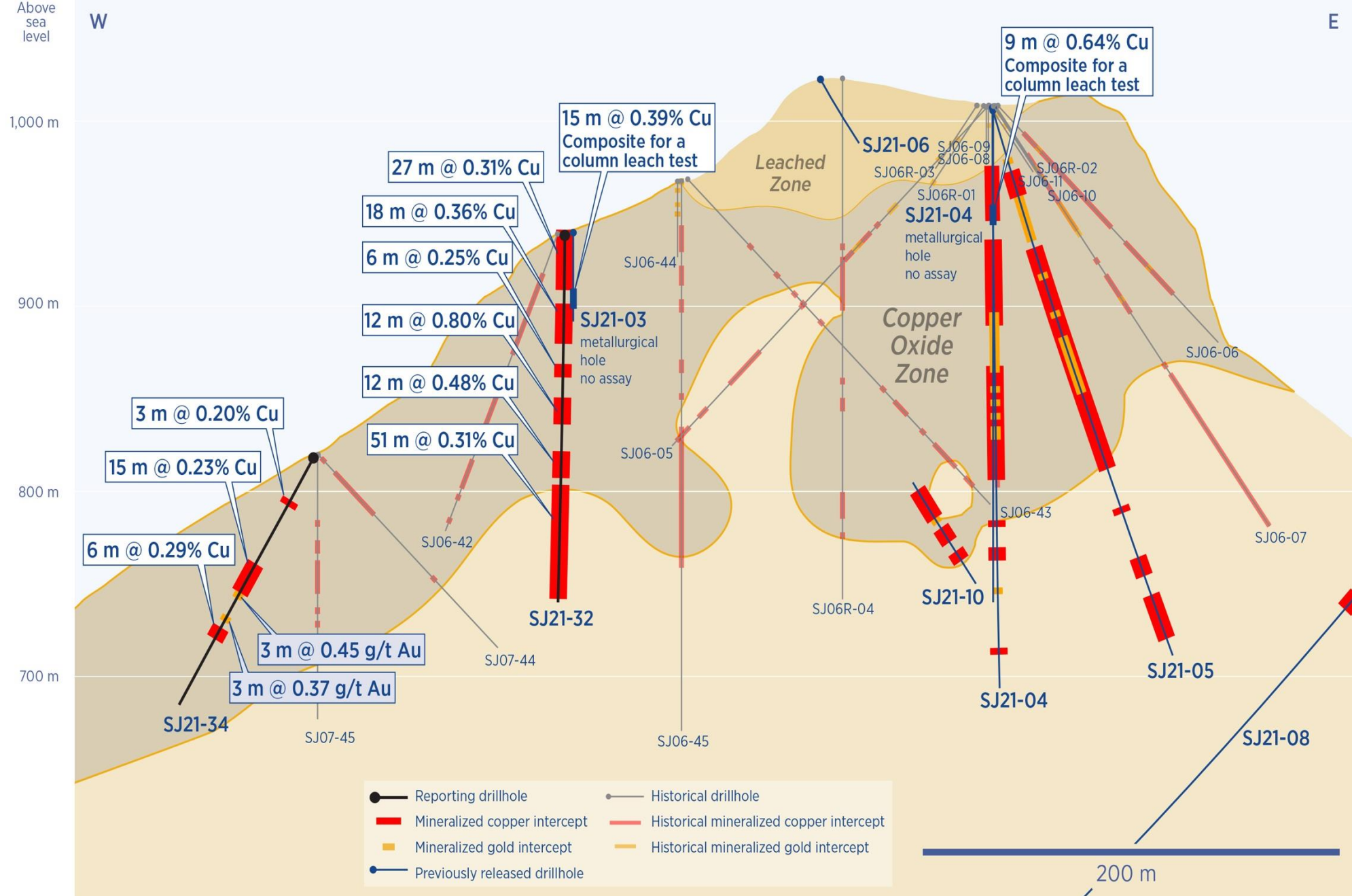
# SAN JAVIER PROJECT

- Gold intercepts not in current PEA



# SAN JAVIER PROJECT

- Copper intercepts from PEA



# SAN JAVIER PEA RESOURCE

	Tonnes X1000	Tcu %	As+Cn Cu %	AsCu %	CnCu %
Measured	12,485	0.278%	0.203%	0.172%	0.032%
Indicated	57,664	0.270%	0.184%	0.148%	0.037%
<b>Total M&amp;I</b>	<b>70,149</b>	<b>0.271%</b>	<b>0.187%</b>	<b>0.152%</b>	<b>0.036%</b>
<b>Inferred</b>	<b>5,965</b>	<b>0.240%</b>	<b>0.152%</b>	0.114%	0.038%

	Total Contained Cu Lbs x 1000	Soluble Contained Cu Lbs x1000
Measured	76,573	55,938
Indicated	342,669	233,504
<b>Total M&amp;I</b>	<b>419,242</b>	<b>289,442</b>
<b>Inferred</b>	<b>31,563</b>	<b>19,923</b>

NI 43-101 Report can be found on [www.SEDAR.com](http://www.SEDAR.com) or at [www.BarksdaleResources.com](http://www.BarksdaleResources.com)

## MINERAL RESOURCE NOTES

- Project NPV estimated at \$111.9 million (7%) with an IRR of 26.3 and a payback of 3.8 years, all pre-tax.
- Tcu = total copper grade; AsCu = acid soluble copper; CnCu = cyanide soluble copper
- AsCu + CnCu cutoffs vary by oxidation type: leach cap & oxide = 0.04%, mixed = 0.07%, sulfide = 0.08%
- Contained pounds = ktonnes x Tcu x 22.04; Soluble pounds = ktonnes x AsCu + CnCu x 22.04
- Mineral Resource tonnage and grades are restricted to the Cerro Verde Deposit
- Total pit shell tonnage = 95,175 ktonnes; ratio of ktonnes below cutoff to above cutoff = 0.25
- Grade capping was applied to reduce the influence of outlier samples; 2.5% Cu was used for the oxide and mixed zones and 1.5% Cu was used for the sulfide zones
- The economic parameters used to define mineral resources is US\$4.00 per pound copper
- Recovery estimates were 85% for leach cap and oxide, 75% for mixed, and 60% for sulfide

Numbers may not add due to rounding.

# WHY INVEST IN BARKSDALE RESOURCES?



## CRITICAL METALS

Barksdale is committed to energy independence in the Americas through the exploration and development of critical metals such as Copper, Zinc, Manganese, Antimony, Silver and Lead.



## EXPLORATION

Down dip extensions of South 32's Taylor and Peake discoveries include; Feeder system with multiple 1990s ASARCO porphyry discoveries; further greenfield prospectivity all on the Sunnyside property.



## JURISDICTION

Our present emphasis is on our Sunnyside project in the Patagonia District of Arizona, USA, adjacent to the South32 properties. We feature exploration assets in Arizona and Mexico.



## MANAGEMENT

Our leadership team is highly experienced and come from great names in the industry such as: Yamana Gold, Barrick, Meridian Gold and America's Gold and Silver.



## CREATE VALUE

The Company is committed to creating significant shareholder value through exploration and by increasing the ownership of the Sunnyside project to 67.5% in the next 6 months

# CONTACT

Investor Relations

604-398-5385

[ir@barksdaleresources.com](mailto:ir@barksdaleresources.com)

[www.BarksdaleResources.com](http://www.BarksdaleResources.com)



TSX.V: **BRO CA** / FRA: **2NZ DE** / OTCQB: **BRKCFus**

# **SUPPLEMENTAL INFORMATION**

# ARIZONA OPTION AGREEMENT

- Barksdale completed the Phase I earn-in requirement to secure 51% of the Sunnyside project.
- Barksdale has elected to pursue the 67 ½% by drilling 25,000 feet and making contracted payment to Great Basin.

Period	C\$ Cash	Exploration Requirement (C\$)	Drilling Footage	Number of Shares	
On execution of agreement	✓ \$750,000 (paid)			✓ 1,250,000 (issued)	} 51%
On or before end of Year 1*	✓ \$1,200,000 (paid)	✓ \$3,000,000 (Incurred PI)		✓ 3,850,000 (issued)	
On or before end of Year 2	✓ \$1,000,000 (paid)	✓ \$3,000,000 (Incurred PI)	✓ 25,000 feet (completed)	✓ 5,000,000 (issued)	} 67.5%
On or before end of Year 3	-	✓ \$3,000,000 (Incurred PI)		-	
On or before end of Year 4	\$550,000	✓ \$3,000,000 (Incurred PI)	25,000 feet	4,900,000	
<b>Total:</b>	<b>C\$3,500,000</b>	<b>C\$12,000,000</b>		<b>15,000,000</b>	

\*Year 1 began on September 8, 2023

# BARKSDALE DRILL PROGRAM RESULTS

## SUN-003

- 10.21m Cu, Zn+Pb, Ag and 98.55 ppm Sb
- 15.24m Cu, Zn+Pb, Ag and 71.64 ppm Sb
- 9.14 m 0.16% Cu, 1.30% Zn+Pb, 246 g/t Ag and 85.59 ppm Sb.

## SUN-003

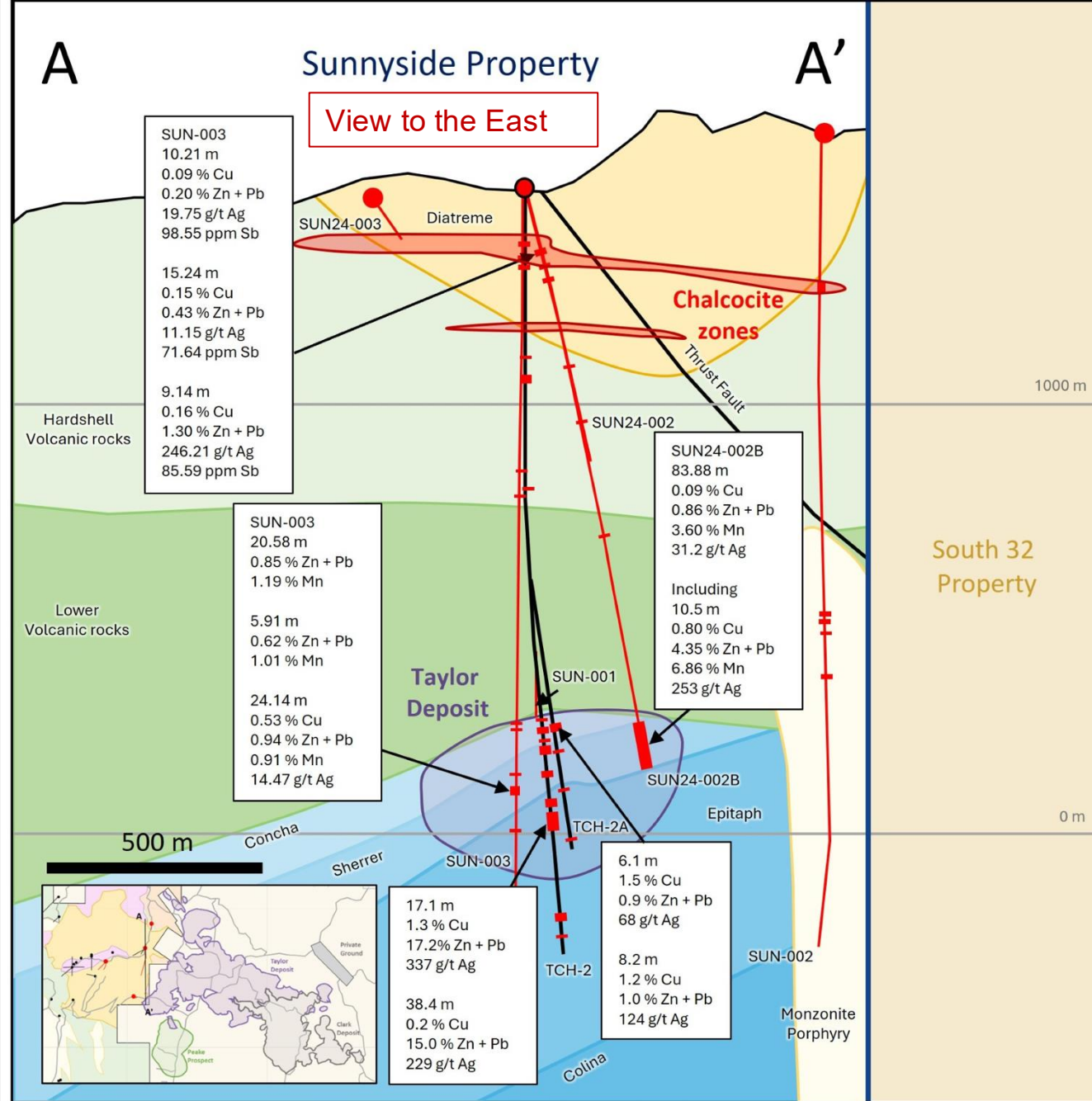
- 20.58m 0.85% Zn+Pb, 1.19% Mn
- 24.14m 0.53% Cu, 0.94% Zn+Pb, 0.91% Mn

## SUN24-002B

- 83.88m 0.09% Cu, 0.86% Zn+Pb, 3.60% Mn 31.2 g/t Ag

## including

- 10.5m 0.80% Cu, 4.35% Zn+Pb, 6.86% Mn and 253 g/t Ag



# ONE SYSTEM, MULTIPLE DISCOVERIES

## SUNNYSIDE TARGETS

CHALCOCITE MANTO

UPPER PORPHYRY

SUNNYSIDE PORPHYRY

PEAKE EXTENSION

TAYLOR EXTENSION

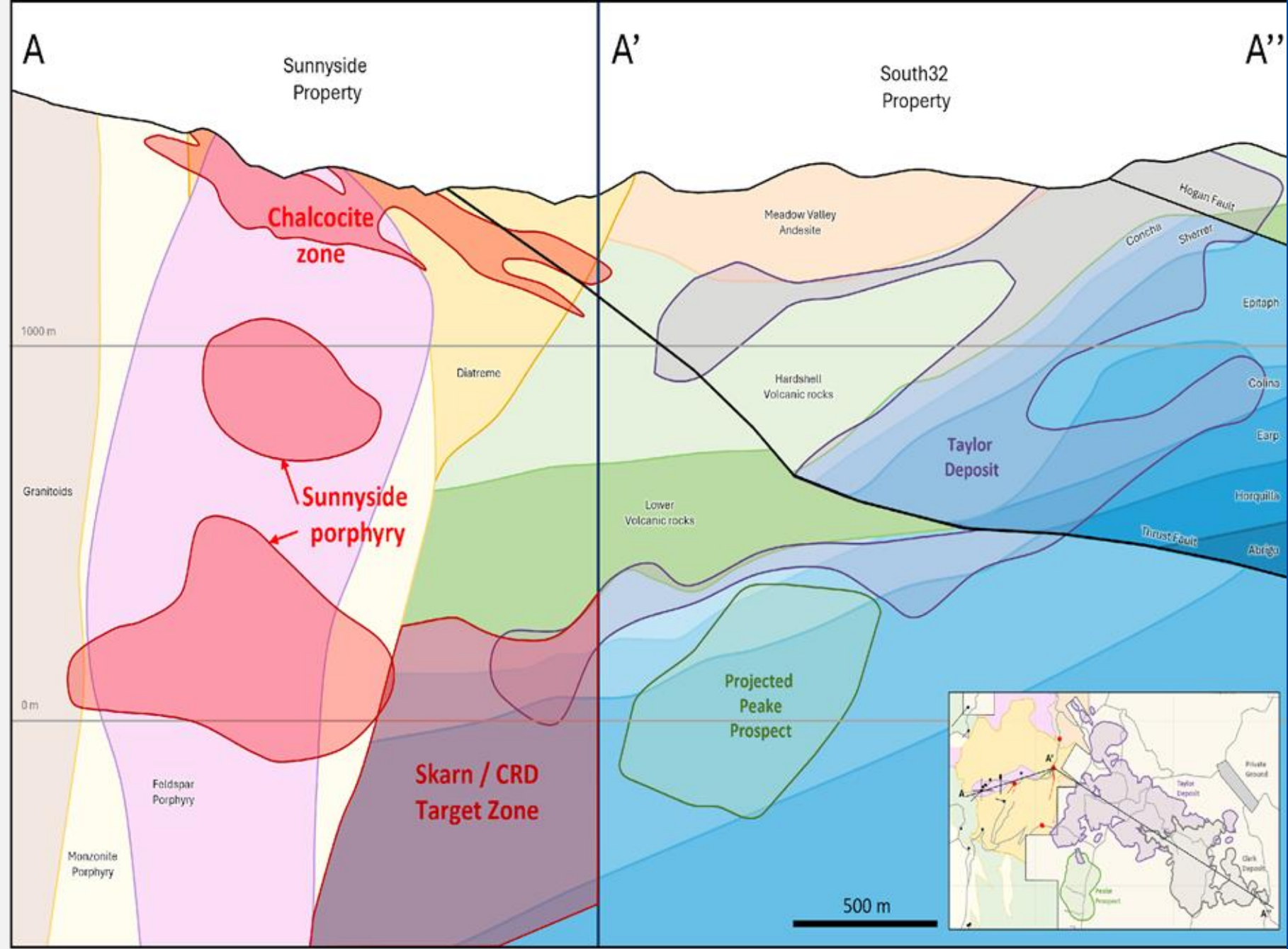
# PHASE II TARGETS

**Chalcocite Zone**  
• Cu and Ag

**Upper SS Porphyry**  
• Cu, Zn and Pb

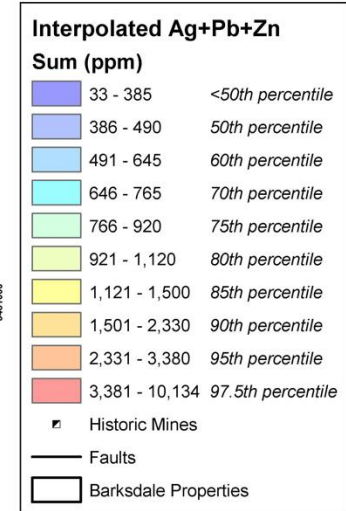
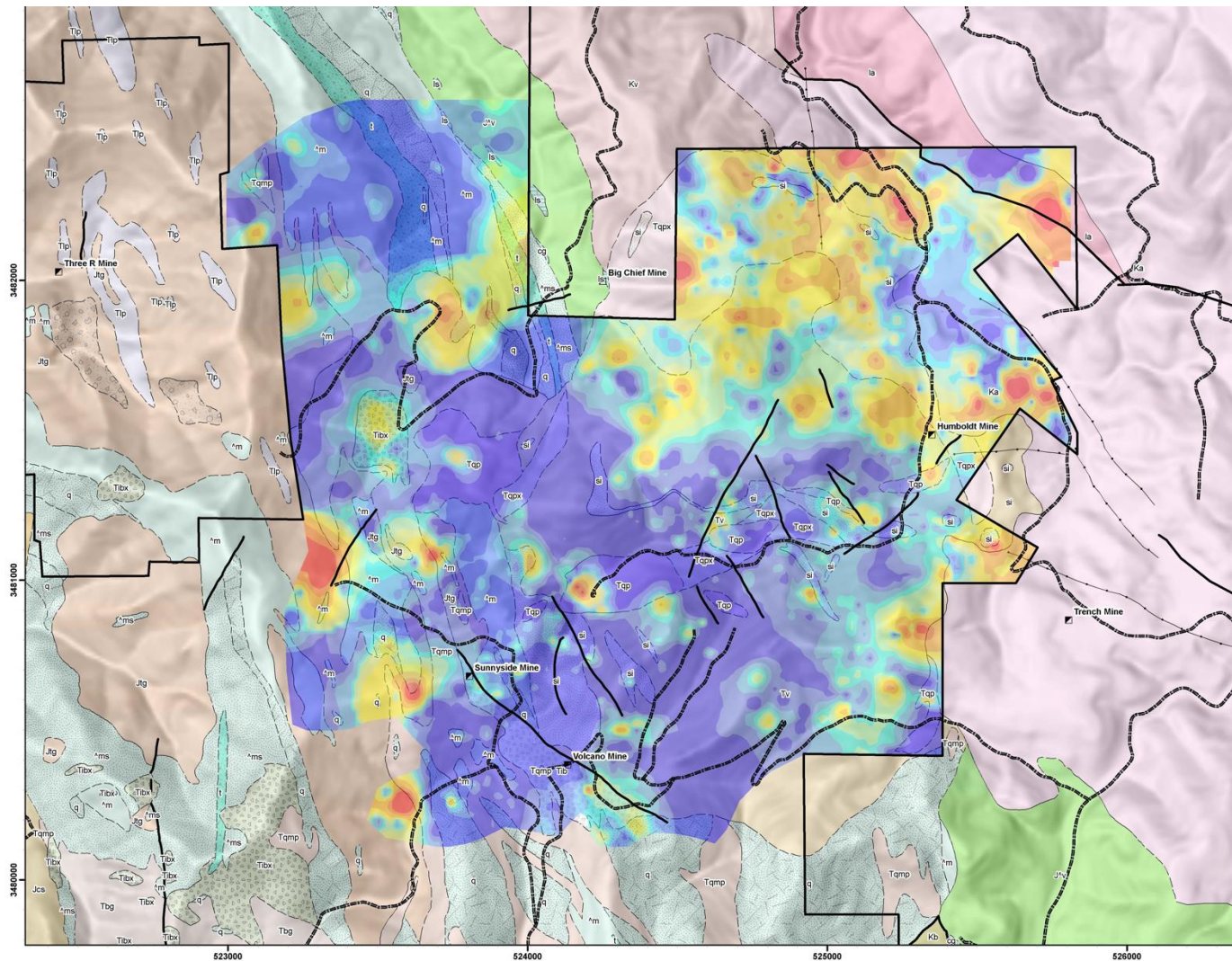
**SPRING 2026**  
**Lower SS Porphyry**  
• Cu, Zn and Pb

**CRD and Skarn Deposits**  
• Zn, Pb and Mn  
• Extensions of Taylor  
• and Peake



# PHASE II TARGETS

## Ag+Pb+Zn



**BARKSDALE CAPITAL CORP.**

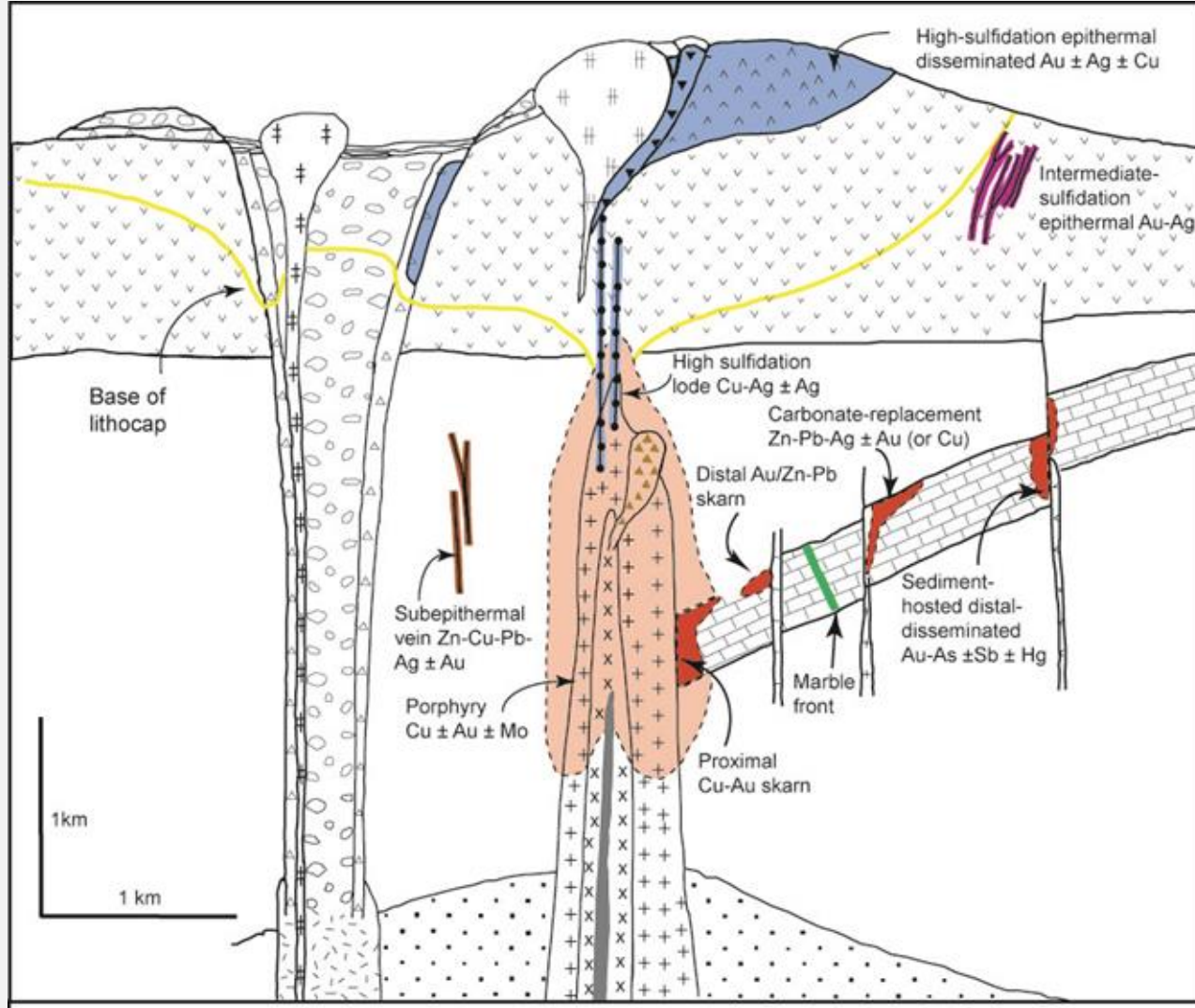
Prepared by:  
Big Rock Exploration  
Date: 1/25/2019

**Interpolated Ag+Pb+Zn Concentrations Sunnyside Project**

Coordinate System: NAD 1927 UTM Zone 12N  
Projection: Transverse Mercator  
Datum: North American 1927  
Units: Meter

1:10,000  
1 inch = 833.33 feet  
1 cm = 100 meters

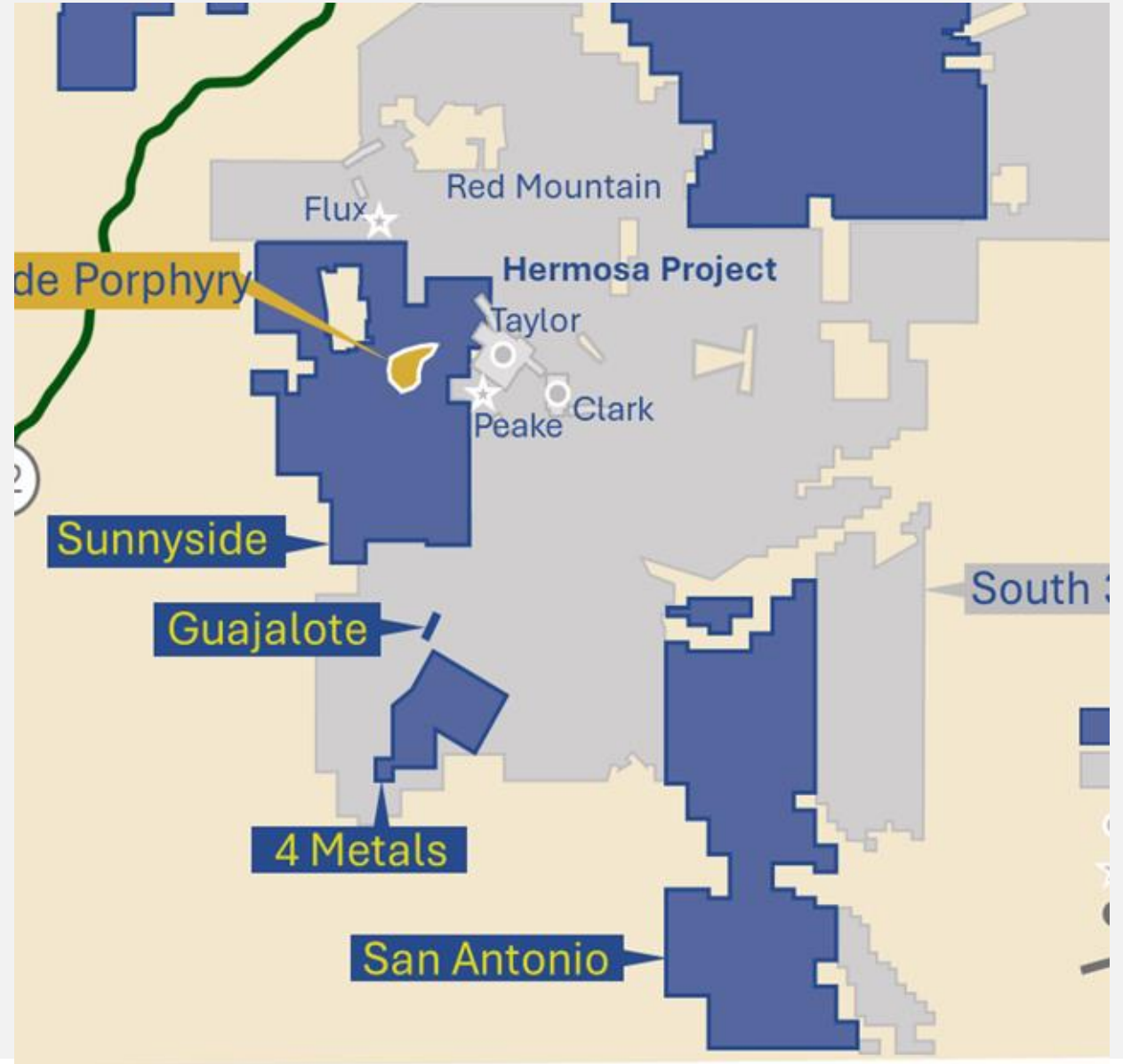
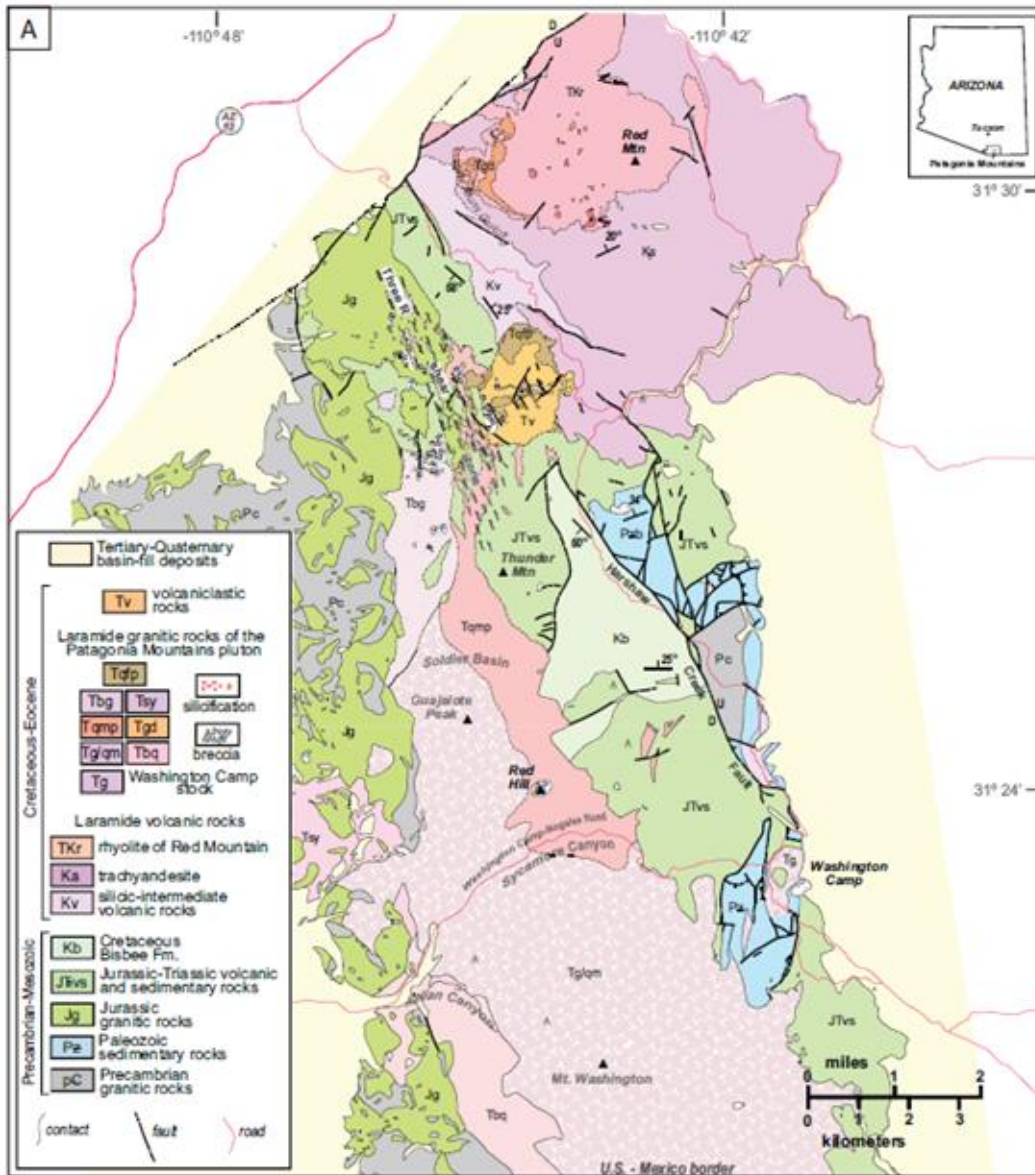
# PORPHYRY DEPOSIT MODEL



## SUNNYSIDE ASSOCIATED MINERAL DEPOSITS

- **Porphyry**                      **Cu +/- Au, Mo**
- **Proximal Skarn**              **Cu-Au**
- **Distal Skarn**                    **Au/Zn-Pb**
- **CRD**                                **Zn-Pb-Ag +/- Au/Cu**
- Sed-Hosted Distal**
- **Disseminated**                  **Au-Ag +/- Sb +/- Hg**
- **Chalcocite**                      **Cu**

# PATAGONIA DISTRICT GEOLOGY



# SOUTH32 HERMOSA PROJECT (2025)

## Developing a large-scale, long-life zinc mine in Arizona, USA

Construction of main shaft (left), ventilation shaft (right) and tailings storage (rear)



### Taylor feasibility study highlights<sup>(a)</sup>

Annual average production	~290kt ZnEq
Initial operating life	~28 years <sup>(b)</sup>
Operating unit costs	~US\$86/t
Pre-production capital	~US\$2,160M
Sustaining capital (average)	~US\$36M p.a.
Free cash flow (average) <sup>6</sup>	~US\$320M p.a.
Net present value <sup>7</sup>	~US\$686M
Internal rate of return <sup>8</sup>	~12%
First production	H2 FY27
Nameplate production	FY30

### Development progress

- State environmental approvals received
- Draft EIS under FAST-41 published in May 2025
- Ventilation shaft sinking is underway
- Process plant construction commenced in April 2025
- Main shaft sinking to commence in June 2025

Notes:

- Refer to market release "Final Investment Approval to Develop Hermosa's Taylor Deposit" dated 15 February 2024. The Feasibility Study has been completed to an AACE International Class 3 estimate standard, with an accuracy level of -10% / +20% for operating and capital costs. The cost estimate has a base date of H2 FY23. Unless stated otherwise, currency is in US dollars (real) and units are metric. The feasibility study outcomes assume the following commodity prices (from FY31): zinc (US\$3,207/t), lead (US\$2,069/t) and silver (US\$20.2/oz).
- Refer to important notices (slide 2) for additional disclosure.

SLIDE 12

## Our PFS mine design employs conventional methods, delivering high productivity from multiple faces

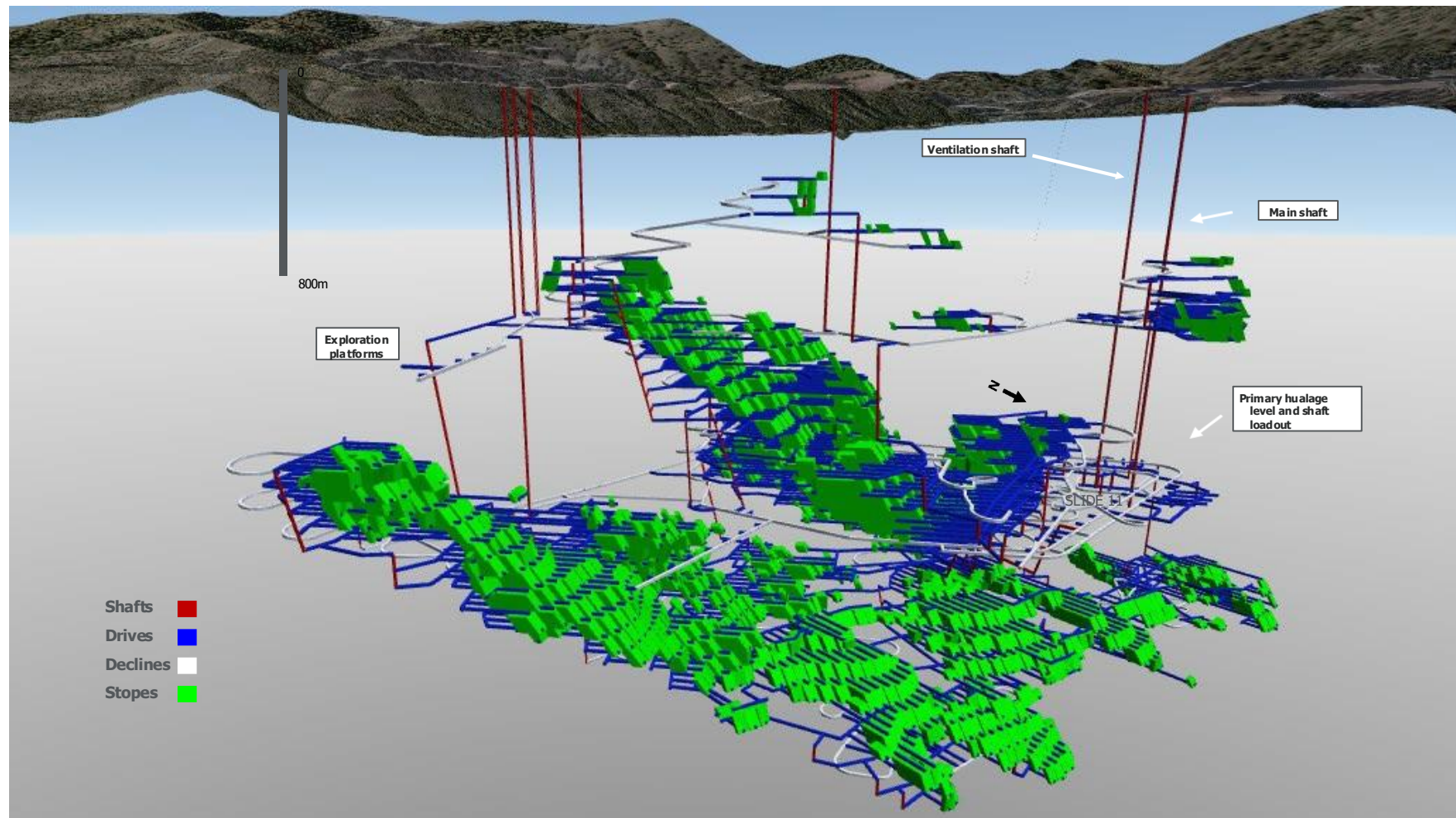
**Dual shaft access prioritises higher grade ore in early years**

**Proposed mining method is low technical risk, employing longhole open stoping, similar to Cannington**

**Multiple concurrent mining areas expected to support high productivity**

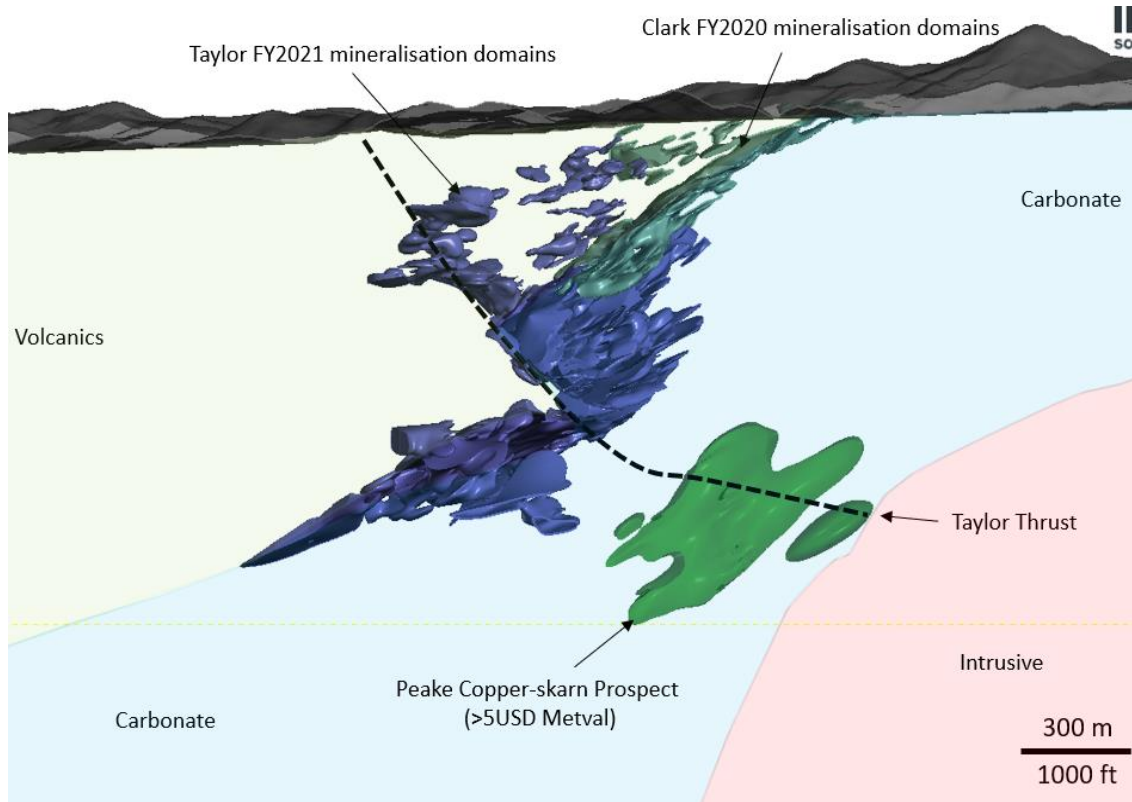
**Single stage ramp-up following orebody dewatering to nameplate production**

Taylor Deposit underground mine design



# HERMOSA EXPLORATION POTENTIAL – PEAKE PROSPECT

## Exploration results support the potential for large copper system



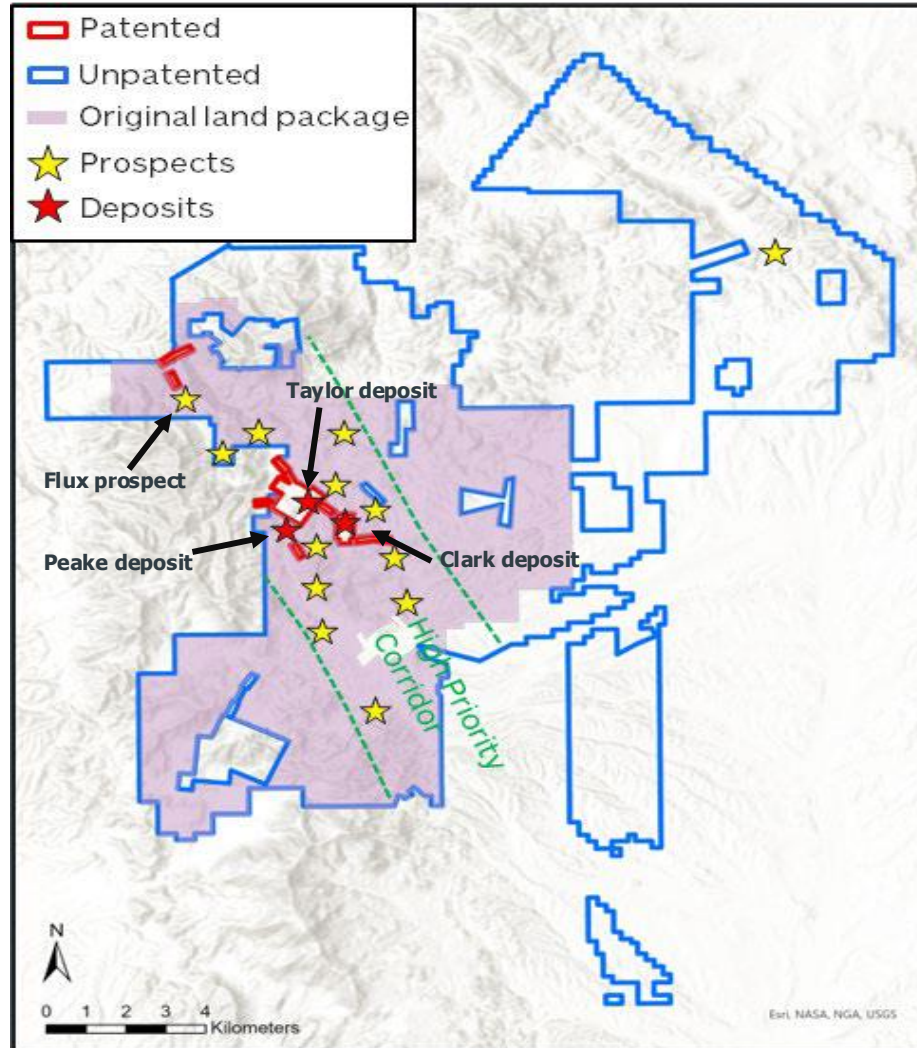
- Exploration drilling has identified near-mine exploration targets, including the Peake prospect
- High-grade copper-lead-zinc-silver mineralisation has been intersected at the skarn hosted Peake prospect, south of the Taylor Deposit
- Interpretation of these results and recently acquired data indicates the potential for a continuous structural and lithology controlled system connecting Taylor Deeps and Peake, a deeper zone prospective for copper
- Further exploration drilling is planned in CY22

## Peake prospect – selected drilling results

Hole ID	From (m)	To (m)	Cut off	Width (m)	Zinc (%)	Lead (%)	Silver (ppm)	Copper (%)
HDS-540	1279.2	1389.0	0.2% Cu	109.7	0.1	0.3	15	0.62
	1303.6	1309.7	0.2% Cu	6.1	0.2	0.4	61	3.48
	1308.2	1384.7	0.2% Cu	76.5	0.2	0.4	25	1.52
HDS-552	1309.9	1328.6	0.2% Cu	18.8	0.1	0.2	40	2.77
	1364.3	1384.7	0.2% Cu	20.4	0.1	0.3	37	2.44
	1322.2	1374.6	0.2% Cu	52.4	0.1	1.1	105	1.73
	1322.2	1346.0	0.2% Cu	23.8	0.1	0.8	81	3.32
HDS-661	1322.2	1330.1	0.2% Cu	7.9	0.1	0.4	81	7.89
	1386.8	1460.6	0.2% Cu	73.8	0.5	0.7	67	1.06
	1399.6	1410.3	0.2% Cu	10.7	0.7	1.5	227	2.84
HDS-717	1456.6	1466.7	0.2% Cu	10.1	0.5	1.0	78	2.57

# SOUTH32 HERMOSA PROJECT (2025)

**Hermosa to bring significant base metals production growth**



## Taylor deposit Zinc-lead-silver

- Future top 10 global zinc mine<sup>4</sup> in the industry's first cost quartile<sup>5</sup>
- Initial 28-year<sup>(a)</sup> operating life, with significant extension potential
- Construction underway with first production expected in H2 FY27

## Clark deposit Battery-grade manganese

- Potential to produce HPMSM<sup>(b)</sup> for the North American EV market
- Phased approach to development, in line with market growth
- Potential development supported by grant funding from US Department of Defense and US Department of Energy

## Exploration land package Copper, zinc

- Highly prospective land package with 15+ polymetallic targets
- High-grade copper and zinc intersected at Peake and Flux
- Potential to produce copper from Peake via the Taylor processing plant<sup>(a)</sup>

Notes:  
a. Refer to important notices (slide 2) and Annexure 1 for additional disclosure.  
b. High-purity manganese sulphate monohydrate.