



# INVESTOR PRESENTATION

Exploring Today. **Delivering Tomorrow.**

June 2026

USA

MEXICO

# FORWARD LOOKING STATEMENTS

**TERMS OF USE AND DISCLAIMER** – This presentation is being provided for the sole purpose of providing the recipients with background information about Barksdale Resources. (“Barksdale Resources” or the “Company”). Barksdale Resources has made reasonable efforts to ensure that the information contained in this presentation is accurate as of the date hereof, however, there may be inadvertent or unintentional errors. No representation, warranty or guarantee, express or implied, is made as to the fairness, accuracy, completeness or correctness of information contained in this presentation, including the accuracy, likelihood of achievement or reasonableness of any forecasts, prospects, results or statements in relation to future matters contained in this presentation. The views and information provided herein are based on a number of estimates and assumptions that are subject to significant exploration, business, economic, regulatory and competitive uncertainties. See “Forward Looking Statements” below. Barksdale Resources is not liable to any recipient or third party for the use of or reliance on the information contained in this presentation.

This presentation provides information in summary form only, is not intended to be complete and does not constitute an offer to sell or the solicitation of an offer to buy any security. It is not intended to be relied upon as advice to investors or potential investors and does not constitute a personal recommendation or take into account the investment objectives, financial situation or needs of any particular investor. Barksdale Resources is not acting as agent or advisor and encourages the use of independent consultants, as necessary, prior to entering into transactions.

**FORWARD LOOKING STATEMENTS** – Except for the statements of historical fact contained herein, the information presented constitutes “forward-looking statements” within the meaning of Canadian and United States securities and other laws. Often, but not always, forward-looking statements can be identified by the use of words such as “plans”, “expects”, “is expected”, “budget”, “scheduled”, “estimates”, “forecasts”, “intends”, “aims”, “anticipates”, “will”, “projects”, or “believes” or variations (including negative variations) of such words and phrases, or statements that certain actions, events, results or conditions “may”, “could”, “would”, “might” or “will” be taken, occur or be achieved. By their very nature, forward-looking statements are subject to numerous risks and uncertainties, some of which are beyond our control. Forward looking statements are based on the opinions and estimates of management at the date the statements are made, as well as a number of assumptions made by, and information currently available to, Barksdale Resources concerning, among other things, anticipated geological formations, potential mineralization, future plans for exploration and/or development, potential future production, drilling exposure, and exploration budgets and timing of expenditures, all of which involve known and unknown risks, uncertainties and other factors which may cause the actual results, performance or achievement of Barksdale Resources to be materially different from any future results, performance or achievements expressed or implied by such forward-looking statements. Factors that could cause actual results to vary materially from results anticipated by such forward looking statements include, among others, risks related to the Company’s limited operating history, current and future exploration activities, the Company’s need for significant additional capital, changes in government legislation, changes in ownership interest in a project, conclusions of economic evaluations, changes in project parameters as plans continue to be refined, future prices and volatility of zinc, silver and other metals, environmental risks and hazards, infrastructure and/or operating costs, labor and employment matters, availability of financing, permitting availability and timing, government regulation, changes in equity markets, the uncertainties involved in interpreting geological data, the validity of the Company’s title to its properties, increases in costs and exchange rate fluctuations, the Company’s dependence on key personnel. There are no known resources or reserves on the Sunnyside Project and the Company’s proposed exploration programs are exploratory searches for commercial quantities of ore. In addition, the close proximity of the Sunnyside Project to Arizona Mining’s Taylor deposit is not necessarily indicative of the zinc and other mineralization present on the Sunnyside Project

Although Barksdale Resources has attempted to identify important factors that could cause actual results to differ materially, there may be other factors that cause results not to be as anticipated, estimated or intended. There can be no assurance that such statements will prove to be accurate as actual results and future events could differ materially from those anticipated in such statements. Barksdale Resources disclaims any intention or obligation to update or revise any forward-looking statements, whether as a result of new information, future events or otherwise, other than as required by applicable law. Accordingly, readers should not place undue reliance on forward-looking statements and trading in securities of Barksdale Resources should be considered highly speculative. All scientific and technical information contained in this presentation has been prepared by, or under the supervision of, Lewis Teal, project manager and geological consultant for Barksdale Resources(CPG-6932) and a qualified person as defined by NI 43-101, Standards of Disclosure for Mineral Projects.

Historical assays contained in this Presentation have not been confirmed by Barksdale Resources, are of uncertain QA/QC standards and should not be relied upon. They are presented as a guide to future exploration.

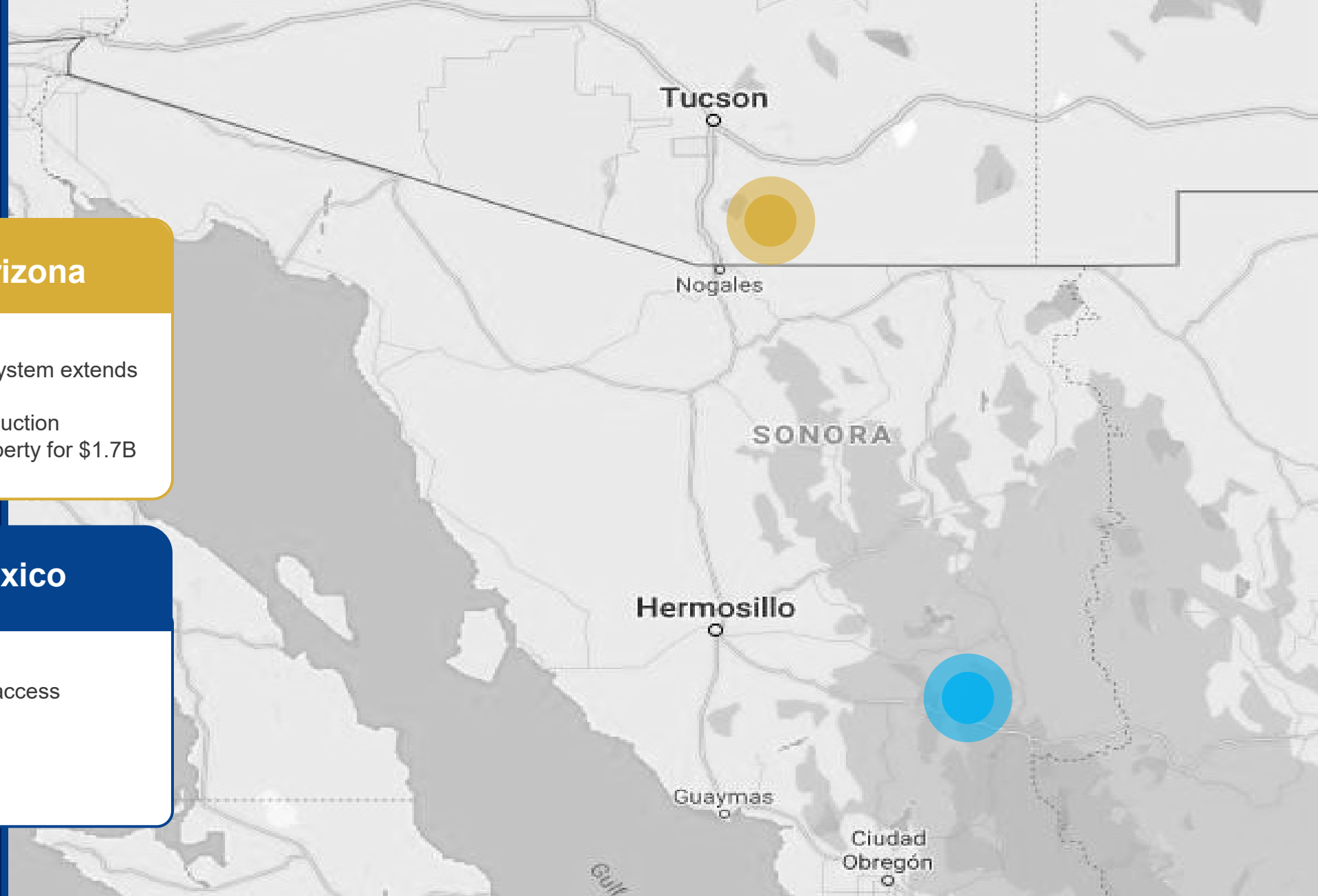
# BARKSDALE: FOCUSED ON DISCOVERY

## Patagonia District, Arizona

- USFS PoO and FONSI Approved
- Near Surface Copper Porphyry System extends to at least 1,000 metres depth
- Historic Silver, Gold, Copper production
- SOUTH32 acquired adjacent property for \$1.7B and approved \$3.0B construction

## San Javier District, Mexico

- Copper-Gold IOCG-type deposit
- Adjacent power and paved road access
- NI 43-101 Compliant Resources
- Robust PEA Economics
- 60% to 85% Recoveries
- Undefined GOLD resource



# OUR PROJECTS



## SUNNYSIDE PROJECT : BRO 51% / GBM 49% JV

The 2026 Phase II program currently underway will increase Barksdale's ownership to 67.5%.

Recent Phase II drill intercepts on the Sunnyside property include:

- SUN26-001R: 39.6m of 0.95 % Cu, 11.8 ppm Ag
- SUN26-002R: 154.2m of 0.77% Cu, 7.9 ppm Ag, including  
60.96m of 0.90% Cu, 11.5 ppm Ag from 173.7m, and  
60.96m of 0.93% Cu, 7.4 ppm Ag from 265.2m

## SAN JAVIER PROJECT

Advanced, 100% owned Copper-Gold deposit 1.5 hours by paved road east of Hermosillo, Sonora, Mexico.

Twelve concessions totaling 1,184 hectares

- Drilled by Barksdale in 2021
- Issued a NI 43-101 compliant PEA in 2024
- M&I Resource of 70.1 M tonnes containing 419 million pounds of copper within a \$4.00/lb Cu pit shell.
- Gold resource estimation not included in PEA.\*\*

NOTES: Historical drilling at Sunnyside was completed prior to the implementation of NI 43-101 and has not been verified by a "qualified person" and therefore should not be relied upon. Intercepts are presented to provide an indication of the possible mineralization within the Sunnyside Property and as a guide to future exploration. \*\* See appendix for summary information or the Company's 2024 NI 43-101 technical report on SEDAR for detailed information.

# CAPITAL STRUCTURE

As of June 08, 2026. All prices listed in CAD.

30 DAY SHARE PRICE RANGE	<b>\$0.36 – \$0.55</b>
SHARES OUTSTANDING	<b>225,417,510</b>
OPTIONS	<b>13,330,655</b>
WARRANTS	<b>95,217,796</b>
FULLY DILUTED	<b>333,965,961</b>
MARKET CAP	<b>\$81.4 million</b>
CASH*	<b>\$4.2 million</b>
CONVERTIBLE DEBT Matures Dec. 31, 2028 / Conv Price - \$0.12	<b>\$4.5 million</b>

\*As of the quarter end, 03/31/2025

## TOP SHAREHOLDERS

- Crescat Capital
- Delbrook Capital Advisors
- Eric Sprott
- Teck Resources
- Osisko Dev Corp
- US Global Investors
- Commodity Discovery Fund
- Tusk (private)

# BARKSDALE TIMELINE

A track record of discovery, growth and value creation.

**AUG 2017**

BRO announces intention to create JV for Sunnyside project and lists on the TSX.V

**AUG 2019**

Barksdale acquires San Antonio project from Teck

**MAY 2021**

Barksdale acquires Goat Canyon and Canelo from Kennecott

**APR 2023**

Barksdale completes acquisition of Four Metals project

**FEB 2024**

Announcement of 13 mineralized intercepts at Sunnyside, highlighting exploration potential

**MAR 2024**

Final assays from drill hole SUN-003 are completed

**FEB 2025**

Highly regarded geologist and BRO Board Member William Wullschleger takes over as CEO

**JUNE 2025**

The Company announces a board decision to pursue Phase II program to further obtain 67 ½ % of Sunnyside project

**FEB 2026**

The Phase I drilling program begins at Sunnyside

**2017**

**OCT 2017**

Barksdale signs JV agreement with Regal Resources, beginning exploration and permitting

**2020**

**SEPT 2020**

Barksdale signs purchase agreement with Tusk to acquire the San Javier project in Mexico

**2023**

**SEPT 2023**

The Company receives necessary permits and begins Phase I drilling campaign

**2024**

**MAY 2024**

Barksdale releases NI 43-101 PEA for San Javier project

**2025**

**MAY 2025**

Barksdale completes Phase I drilling requirements to obtain 51% of Sunnyside ownership with final payments delivered in September

**2026**

**JULY 2025**

Our JV partner in Sunnyside Regal Resources, changes their name to Great Basin Metals

# BARKSDALE LEADERSHIP TEAM

## WILLIAM WULFTANGE

### CEO and Director

William began his career in Nevada as an exploration geologist contributing to the discovery of the world class Paradise Peak Mine in 1983. During the following 38 years, William contributed to the discovery, development and production of highly successful precious metal mines including the El Peñón mine in Chile and the Cerro Negro project, now a mine, in Argentina. He has critical experience in precious metal and copper project evaluations and has acted as a Qualified Person for resource and reserve reporting for Meridian Gold, Andean Resources, and Yamana Gold. He is a past President of the SEG Foundation and currently serves within the foundation on a volunteer basis.

## ALAN ROBERTS

### VP Exploration & QP

A seasoned professional with over three decades of experience in mineral exploration and mining. He holds a Bachelor of Science in Geology from Goldsmiths, University of London (1989) and a Master of Science in Mineral Exploration and Geophysics from Imperial College London, Royal School of Mines (1992).

## MICHAEL WALDKIRCH, CPA

### CFO

A Certified Public Accountant with extensive experience providing a variety of financial and business consultancy services to public and private companies since 1998.

## BRAD NORLING

### Senior Permitting Consultant

Over 27 years experience providing biological, permitting, regulatory compliance, and environmental assessment services for the natural resource and renewals industries.

## JEFF O'NEILL

### Special Advisor

Jeff is the owner of JMO Enterprises and a former board member of Barksdale.

## Board of Directors

### DARREN BLASUTTI

#### Chairman

EVP Minera Alamos  
President, Mexico, Americas Gold and Silver  
Former Sr. VP Barrick

### PETER McRAE

#### Director

SVP Corporate Affairs at Americas Gold and Silver

### WILLIAM WULFTANGE

#### Director

### QUINTON HENNIGH

#### Director

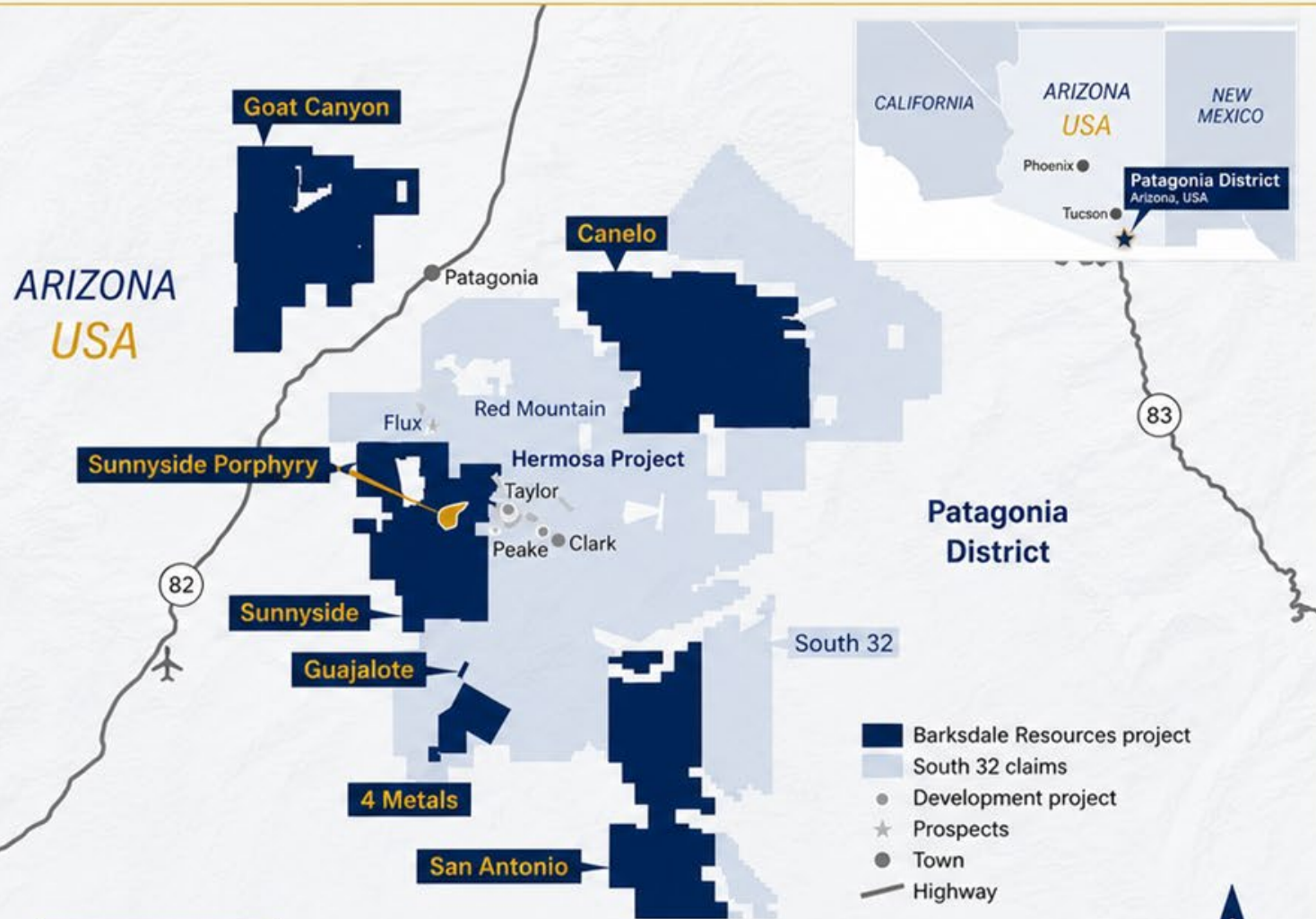
President of San Cristobal Mining

### CHRISTINA MCCARTHY

#### Director

Geologist, founder, former CEO  
Paycore Minerals and board member.

# BARKSDALE ARIZONA PROJECTS



## EXPLORING FOR

<b>Cu</b> COPPER	<b>Zn</b> ZINC	<b>Au</b> GOLD	<b>Ag</b> SILVER	<b>Mn</b> MANGANESE	<b>Sb</b> ANTIMONY

## SUNNYSIDE – 51%, plan to 67.5%

- Downdip extensions of South 32's Taylor and Peake deposits, *but that's not all....*
- Near surface chalcocite deposits
- Porphyry style Cu and Au
- 286 unpatented claims, 5,223.1 acres
- Earn-in up to 67.5%

## CANELO and GOAT CANYON – 100%

- Former Kennecott/Rio Tinto property
- Early-stage Cu porphyry and CRD/Skarn projects
- 433 federal mining claims/8,700 acres
- 314 federal mining claims/6,400 acres

## SAN ANTONIO – 100%

- Southern ext. of Harshaw Creek fault system
- Copper Porphyry style system
- Teck retains a 1.5% NSR and FROR
- 315 unpatented claims, 6,300 acres

## FOUR METALS – 100%

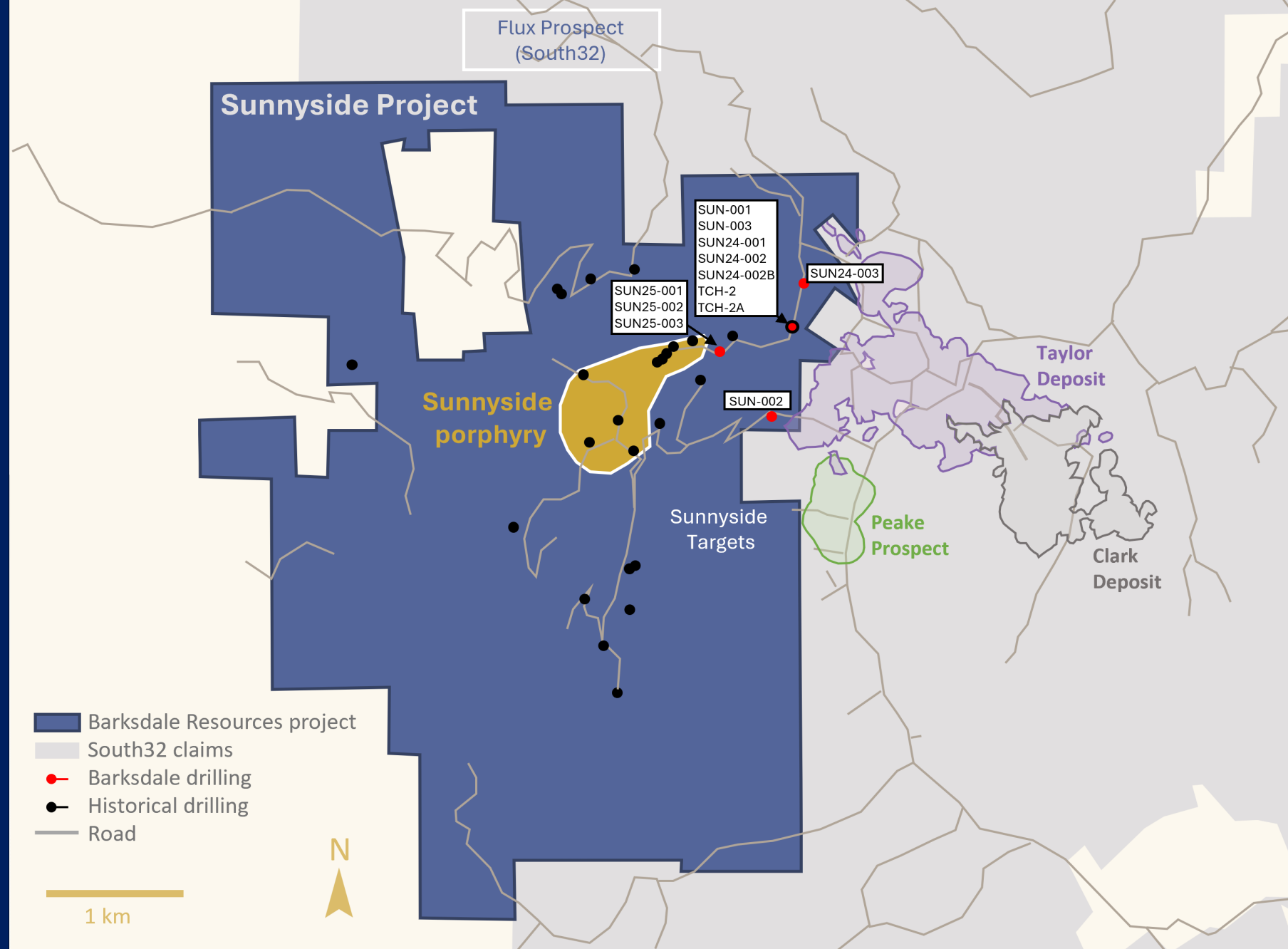
- Breccia pipes and buried porphyry-style mineralization
- 40 unpatented claims, 760 acres

## GUAJALOTE – 100%

- Patented mining claim

# ONE SYSTEM, MULTIPLE TARGETS

- The SUNNYSIDE PROJECT borders South32's Hermosa project on the North, South and East claim boundaries
- The HEAT ENGINE responsible for mineralization at Sunnyside and Hermosa is located on the SUNNYSIDE PROJECT
- BRO exploration confirmed the *extension of the Taylor Deposit onto the Sunnyside Project* in DH SUN24-002B
- The BRO Phase II drill program will focus on Cu, Zn, Ag and Au targets, including near surface Chalcocite zones, shallow vein and breccia extensions and fracture study anomalies.



# ONE SYSTEM, MULTIPLE DISCOVERIES

## SUNNYSIDE TARGETS

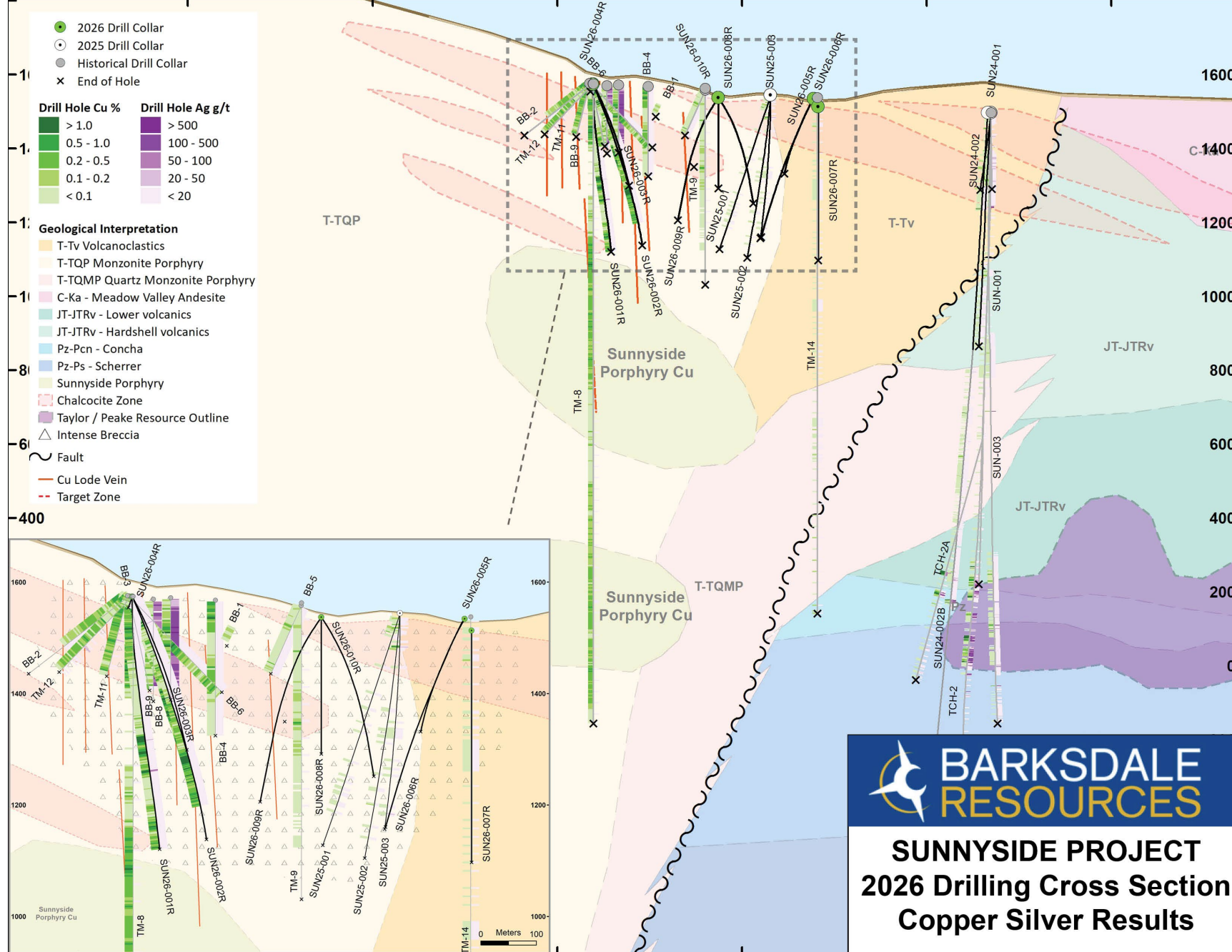
CHALCOCITE MANTO

SUNNYSIDE PORPHYRY SYSTEM

HISTORICAL SILVER, COPPER-GOLD AND OTHER MINE EXTENSIONS

PEAKE EXTENSION

TAYLOR EXTENSION



**BARKSDALE RESOURCES**

**SUNNYSIDE PROJECT**  
**2026 Drilling Cross Section**  
**Copper Silver Results**

Note: Initial drilling at Sunnyside prior to Barksdale Resources was completed before the implementation of NI 43-101 standards and has not been verified by a "qualified person" and therefore should not be relied upon. Intercepts are presented to provide an indication of the possible mineralization within the Sunnyside property.

# SOUTH32's HERMOSA – Next to Sunnyside

## ~US\$5 Billion

### Acquisition and Construction

- Acquired for \$1.7B in 2018
- **H2 2028 Initial Production**
- 2030 Steady State Production

## +30 Year

### Mine Life

- 65Mt reserve grading 4.35% Zinc, 4.9% Lead and 82 g/t Silver
- Covers first 19 years of mine life
- 153 million tonnes resource grading 3.53% Zinc, 3.83% Lead and 77 g/t Silver

## 4.3Mtpa

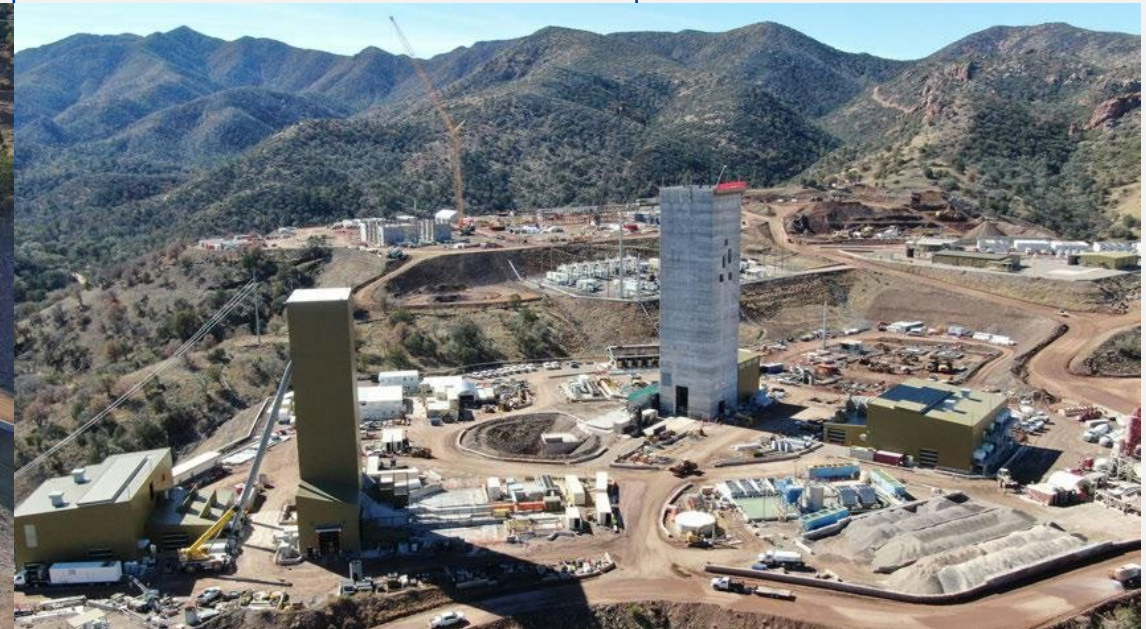
### Annual Milling Capacity

- Production: 114kt zinc; 142kt lead; 7.4moz silver annually

## US\$0.16/lb

### All-In Sustaining Costs for Zinc (After Credits)

- First quartile cash costs



# 2026 Q2-Q3

## PHASE II STRATEGY and Beyond

Complete 25,000-foot RC drill program to test near surface copper mineralization and to earn 67.5% ownership of Sunnyside.

### Targets include:

- Hypogene sulphide mineralization; mid-level Porphyry mineralization
- Near surface Fracture Study Cu-Au, Au and Ag-Pb-Zn targets
- Near surface CSAMT and NSAMT geophysics targets
- Near surface extensions for the World's Fair structure

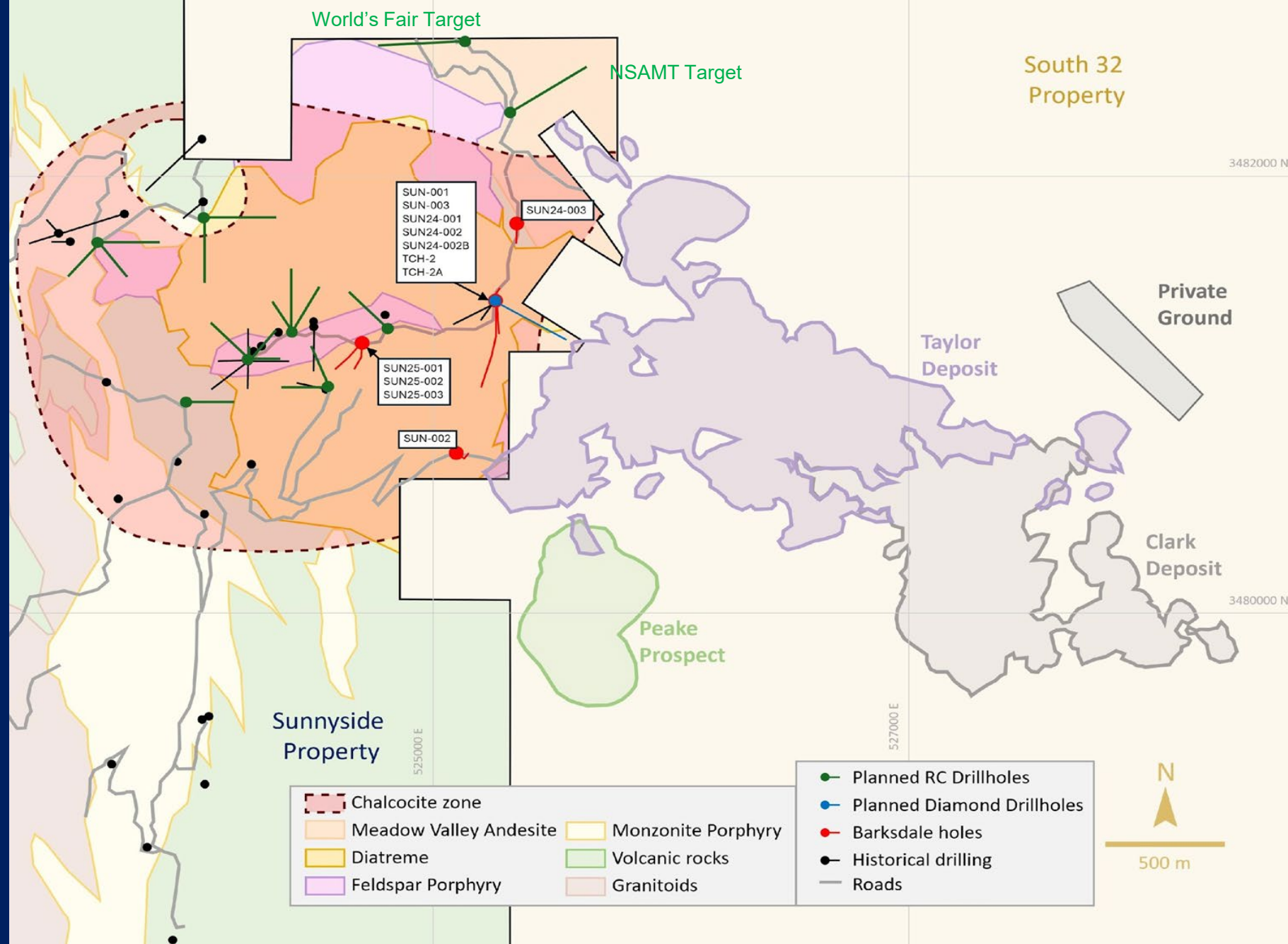
Follow-up with a minimum 50,000-foot ( 15,240 meter) diamond drill program to define shape, depth and grade of the copper-sulphide mineralization of the Sunnyside Porphyry System *and*, near-by silver and polymetallic targets

# PHASE II TARGETS

## Near Surface Copper

Aerial view of the extensive surface and near surface presence (dashed outline) of Chalcocite (Cu<sub>2</sub>S) recognized by ASARCO, Kerr McGee and others in historical exploration programs.

BRO plans a series of holes to confirm, extend and infill the central and other occurrences.



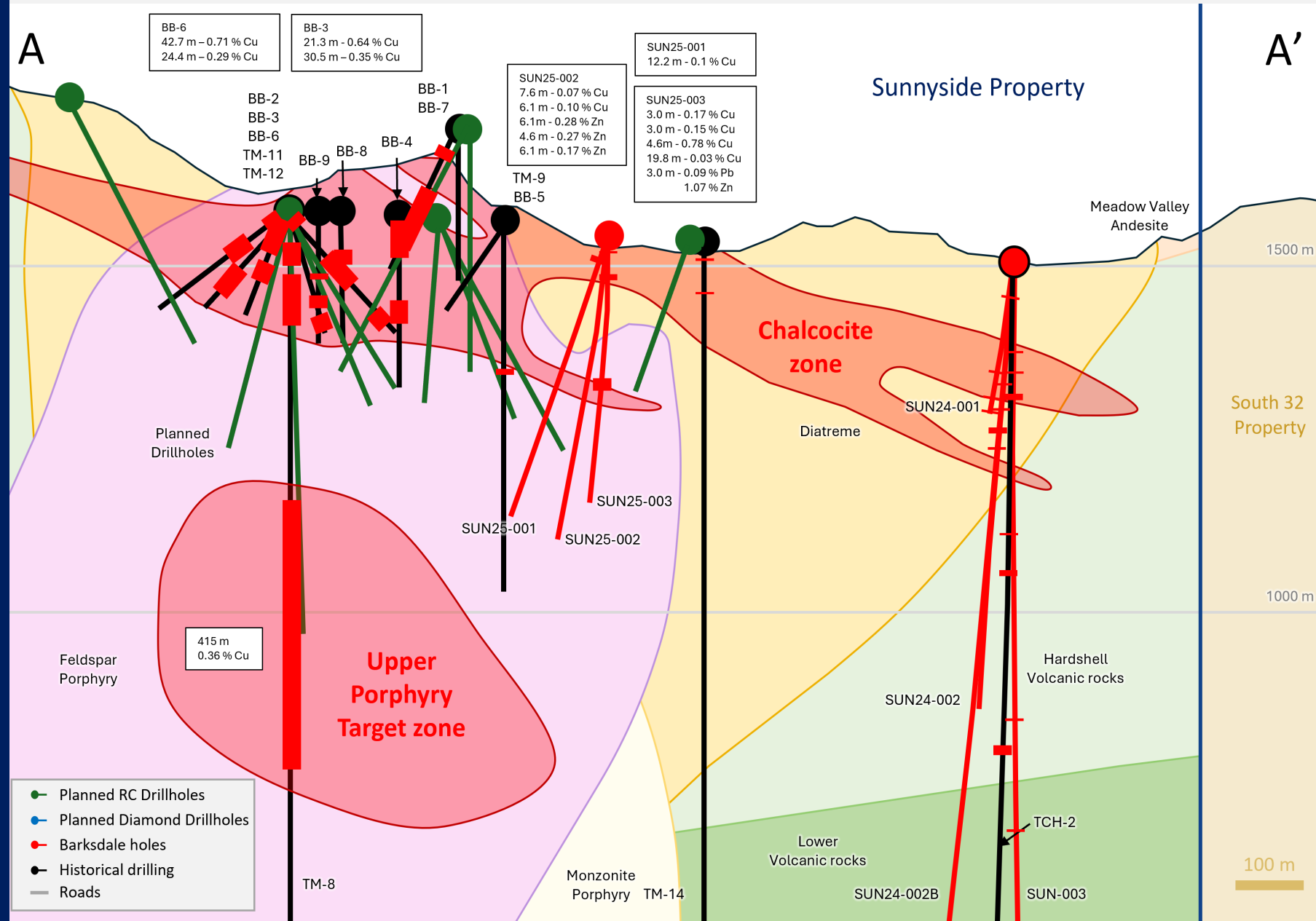
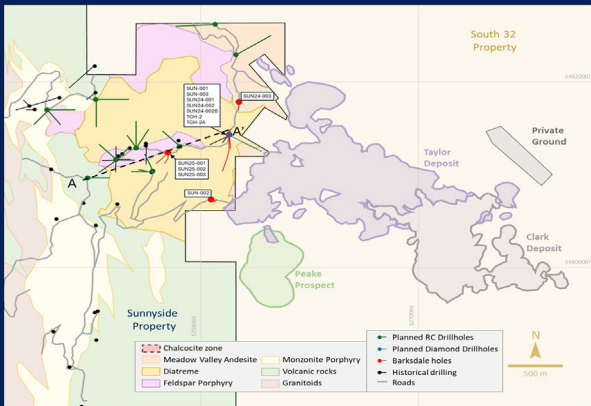
# PHASE II TARGETS

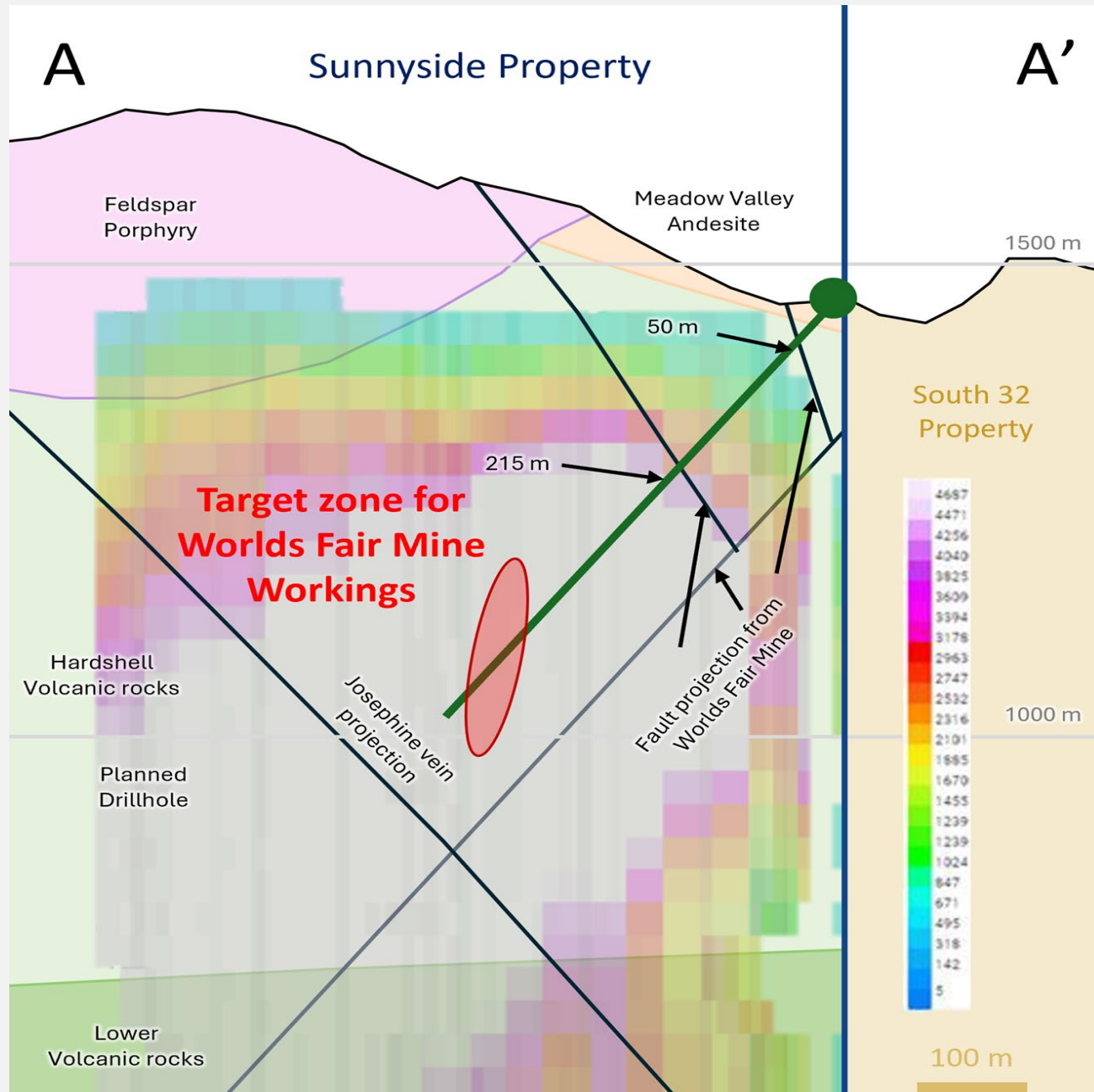
## Chalcocite Target Infill and extend

Follow up 1990 ASARCO recommendations to infill.

## Upper Porphyry Target

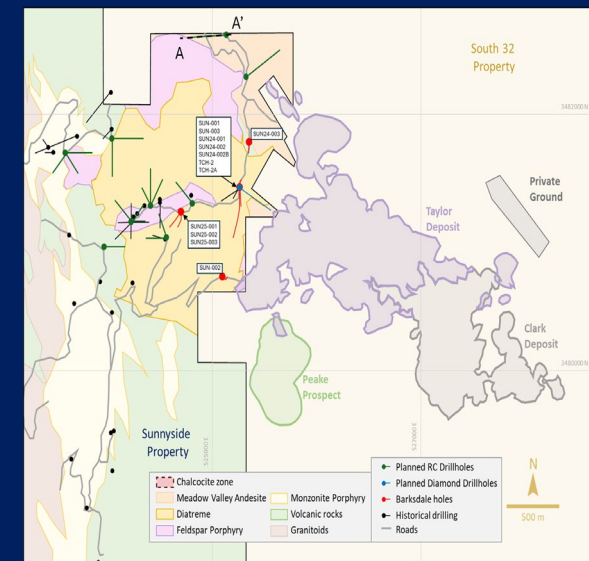
- Offset and twin TM-8 to begin definition of the upper porphyry system for Cu and Zn as hit in SUN25-002 and 003.





## PHASE II TARGETS (Shallow)

- Shallow NSAMT geophysical target
- Surface Gold and Lead anomaly over the projection of various vein-bearing structures
- Potential for mineralized breccia pipes, porphyry and epithermal veins



# PHASE II RESULTS

## Chalcocite and Sunnyside Porphyry Targets

SUN26-001R to 014R and 016R to 020R **COMPLETED**

### Published Results:

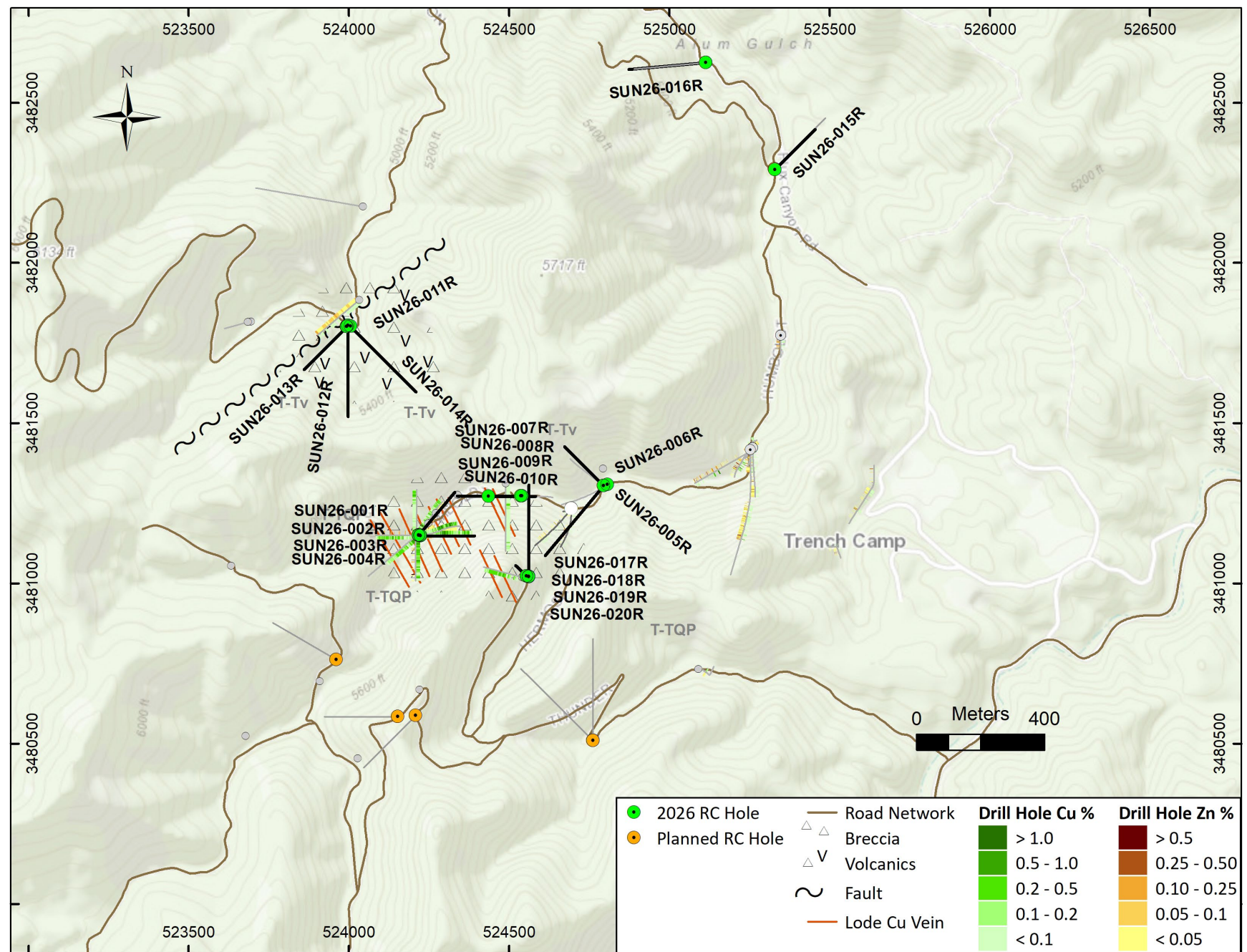
SUN26-001R  
**0.29% Cu over 454.15m** from 3.05m to 457.20m including:  
**0.95% Cu over 39.63m** from 248.41m to 288.04m

SUN26-002R  
**0.45% Cu over 392.19m** from 3.05m to 396.24m including:  
**0.90% Cu over 60.96m** from 173.74m to 234.70m  
**0.93% Cu over 60.96m** from 265.18m to 326.14m

SUN26-003R  
**0.64% Cu over 53.34m** from 7.62m to 60.96m

## World's Fair and January-Norton Targets

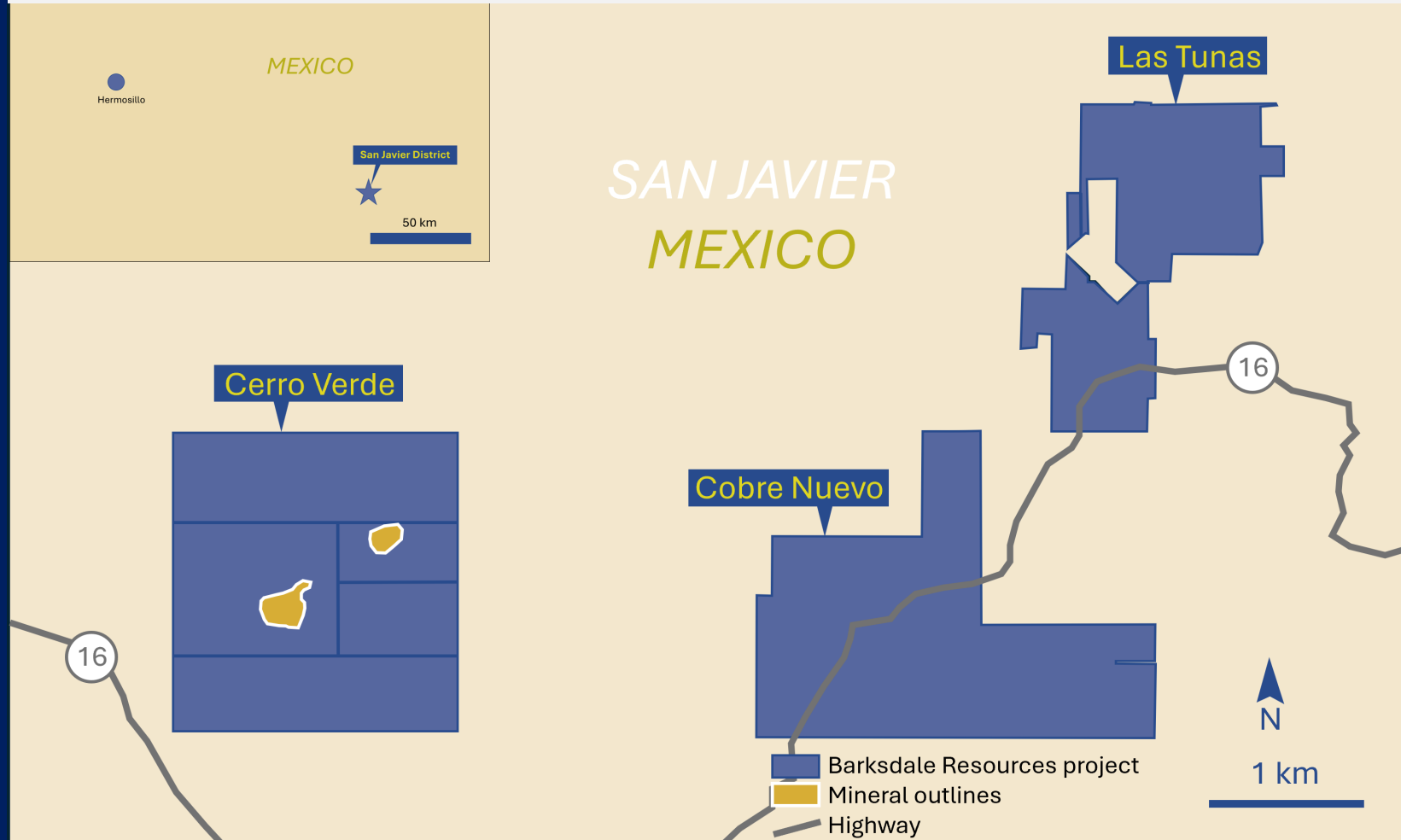
SUN26-015R and 016R **COMPLETED**



# BARKSDALE MEXICO HOLDINGS

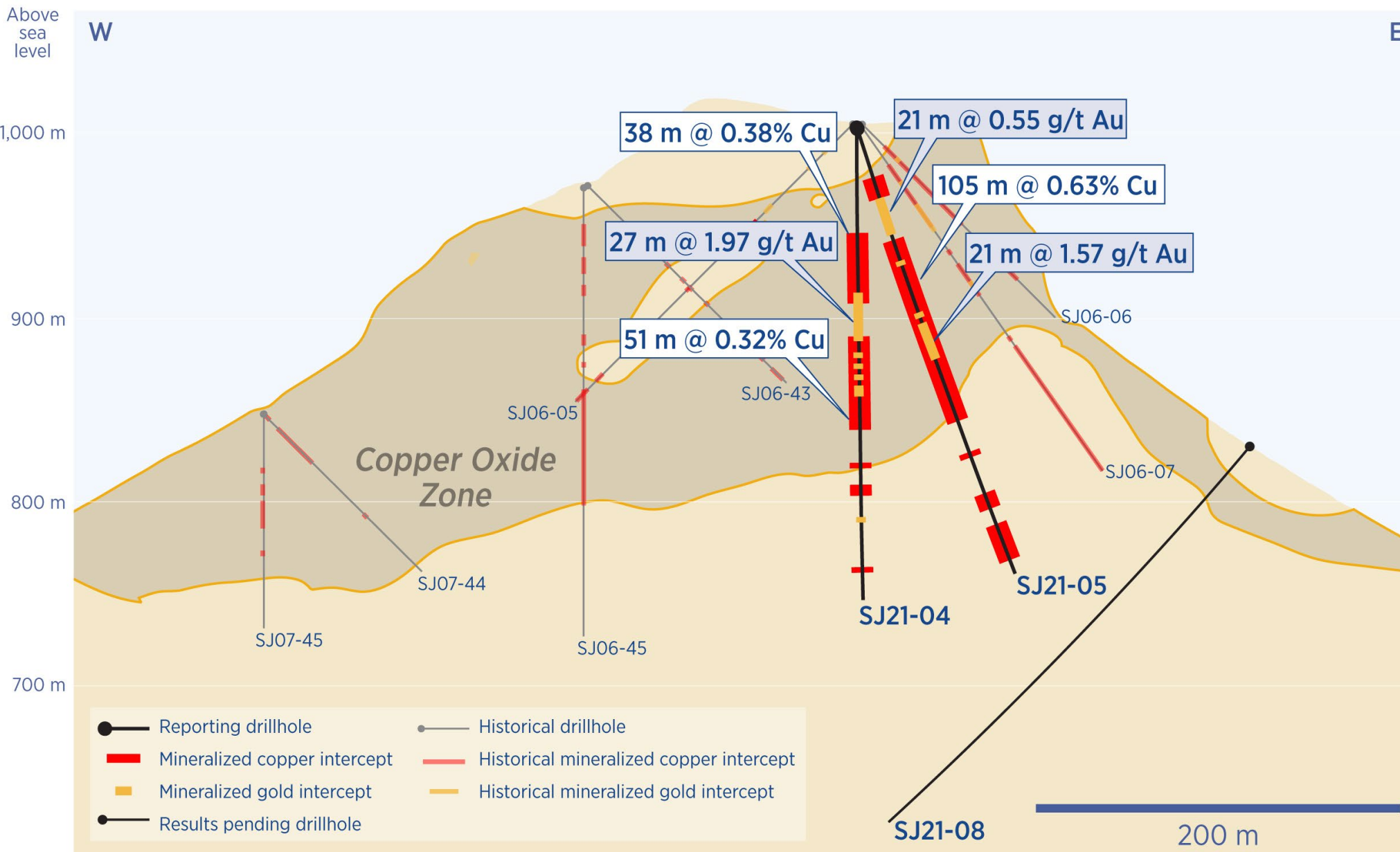
## SAN JAVIER PROJECT

- 140 km/87 mi southeast of Hermosillo in Mexico state of Sonora
- 9 mining concessions with a mining claim area of ~1,184 hectares
- Area features development ready infrastructure
- NI 43-101 PEA on project (see slide 22)



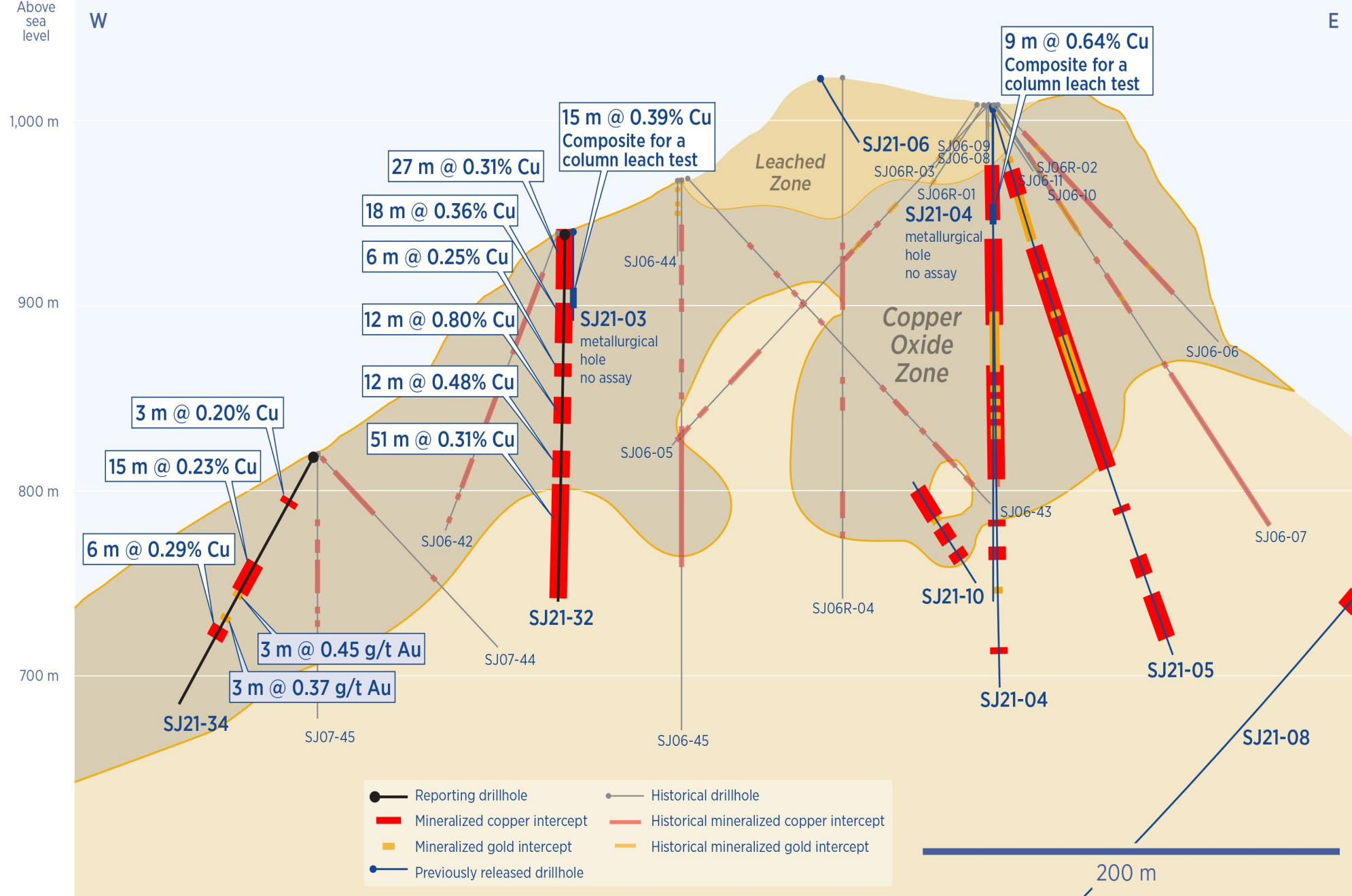
# SAN JAVIER PROJECT

- Gold intercepts not in current PEA



# SAN JAVIER PROJECT

## Copper intercepts from PEA



# SAN JAVIER PEA RESOURCE

	Tonnes X1000	Tcu %	As+Cn Cu %	AsCu %	CnCu %
Measured	12,485	0.278%	0.203%	0.172%	0.032%
Indicated	57,664	0.270%	0.184%	0.148%	0.037%
<b>Total M&amp;I</b>	<b>70,149</b>	<b>0.271%</b>	<b>0.187%</b>	<b>0.152%</b>	<b>0.036%</b>
<b>Inferred</b>	<b>5,965</b>	<b>0.240%</b>	<b>0.152%</b>	<b>0.114%</b>	<b>0.038%</b>

	Total Contained Cu Lbs x 1000	Soluble Contained Cu Lbs x1000
Measured	76,573	55,938
Indicated	342,669	233,504
<b>Total M&amp;I</b>	<b>419,242</b>	<b>289,442</b>
<b>Inferred</b>	<b>31,563</b>	<b>19,923</b>

NI 43-101 Report can be found on [www.SEDAR.com](http://www.SEDAR.com) or at [www.BarksdaleResources.com](http://www.BarksdaleResources.com)

## MINERAL RESOURCE NOTES

- Project NPV estimated at \$111.9 million (7%) with an IRR of 26.3 and a payback of 3.8 years, all pre-tax.
- Tcu = total copper grade; AsCu = acid soluble copper; CnCu = cyanide soluble copper
- AsCu + CnCu cutoffs vary by oxidation type: leach cap & oxide = 0.04%, mixed = 0.07%, sulfide = 0.08%
- Contained pounds = ktonnes x Tcu x 22.04; Soluble pounds = ktonnes x AsCu + CnCu x 22.04
- Mineral Resource tonnage and grades are restricted to the Cerro Verde Deposit
- Total pit shell tonnage = 95,175 ktonnes; ratio of ktonnes below cutoff to above cutoff = 0.25
- Grade capping was applied to reduce the influence of outlier samples; 2.5% Cu was used for the oxide and mixed zones and 1.5% Cu was used for the sulfide zones
- The economic parameters used to define mineral resources is US\$4.00 per pound copper
- Recovery estimates were 85% for leach cap and oxide, 75% for mixed, and 60% for sulfide

Numbers may not add due to rounding.

# WHY INVEST IN BARKSDALE RESOURCES?



## CRITICAL METALS

Barksdale is committed to energy independence in the Americas through the exploration and development of critical metals such as Copper, Zinc, Manganese, Antimony, Silver and Lead.



## EXPLORATION

Down dip extensions of South 32's Taylor and Peake discoveries include; Feeder system with multiple 1990s ASARCO porphyry discoveries; further greenfield prospectivity all on the Sunnyside property.



## JURISDICTION

Our present emphasis is on our Sunnyside project in the Patagonia District of Arizona, USA, adjacent to the South32 properties. We feature exploration assets in Arizona and Mexico.



## MANAGEMENT

Our leadership team is highly experienced and come from great names in the industry such as: Yamana Gold, Barrick, Meridian Gold and America's Gold and Silver.



## CREATE VALUE

The Company is committed to creating significant shareholder value through exploration and by increasing the ownership of the Sunnyside project to 67.5% in the next 6 months

# CONTACT

604-398-5385

[ir@barksdaleresources.com](mailto:ir@barksdaleresources.com)

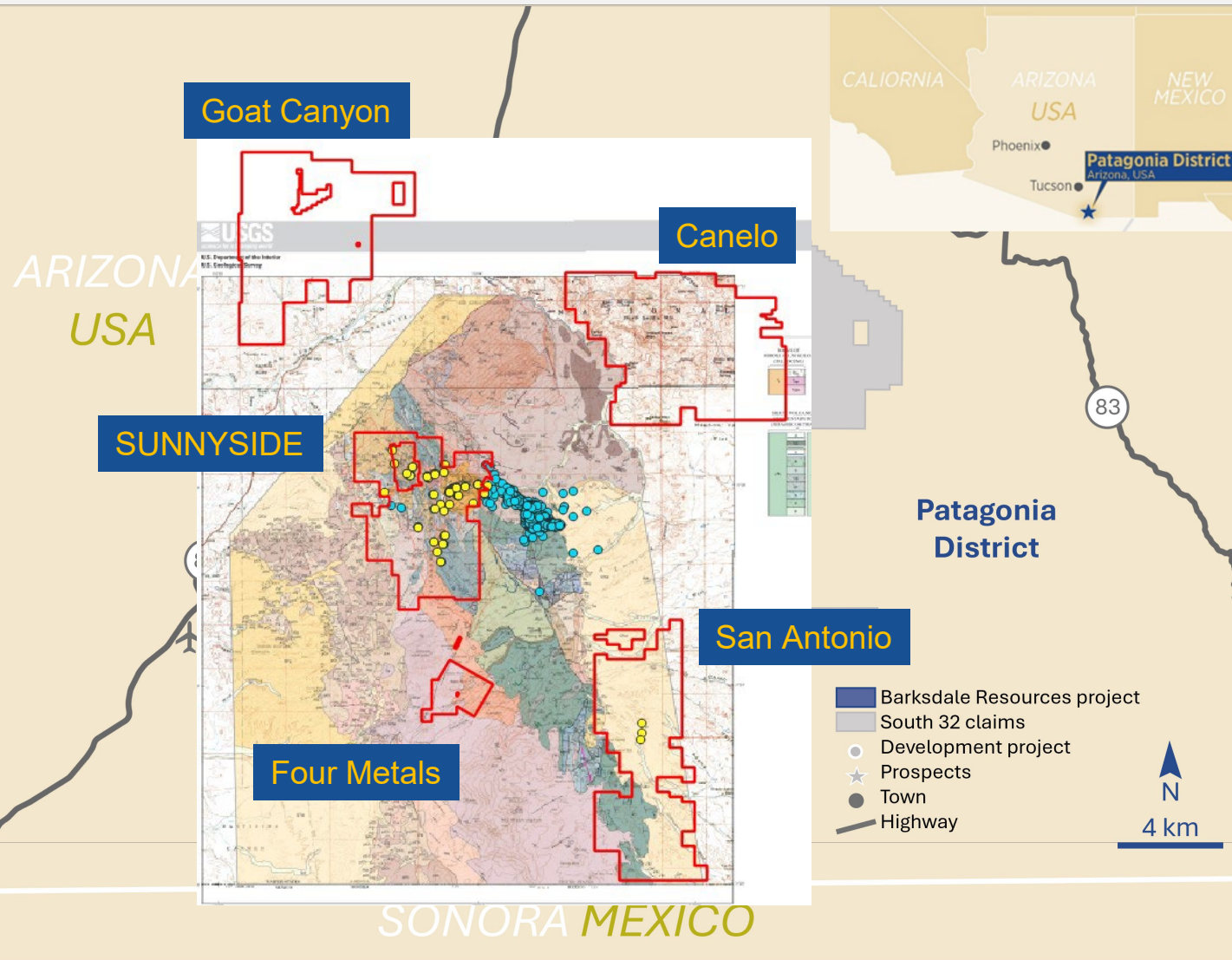
[www.BarksdaleResources.com](http://www.BarksdaleResources.com)



TSX.V: **BRO** CA / FRA: **2NZ** DE / OTCQB: **BRKCF**bus

# BARKSDALE ARIZONA HOLDINGS

## EXPLORATION STAGE



### CANELO and GOAT CANYON - 100%

- Former Kennecott/Rio Tinto property
- Early-stage Cu porphyry and CRD/Skarn projects
- 433 federal mining claims/8,700 acres
- 430 federal mining claims, 2 ASLD Leases

### SAN ANTONIO - 100%

- Southern ext. of Harshaw Creek fault system
- Copper Porphyry style system
- Teck retains a 1.5% NSR and FROR
- 315 unpatented claims, 6,300 acres

### FOUR METALS – 100%

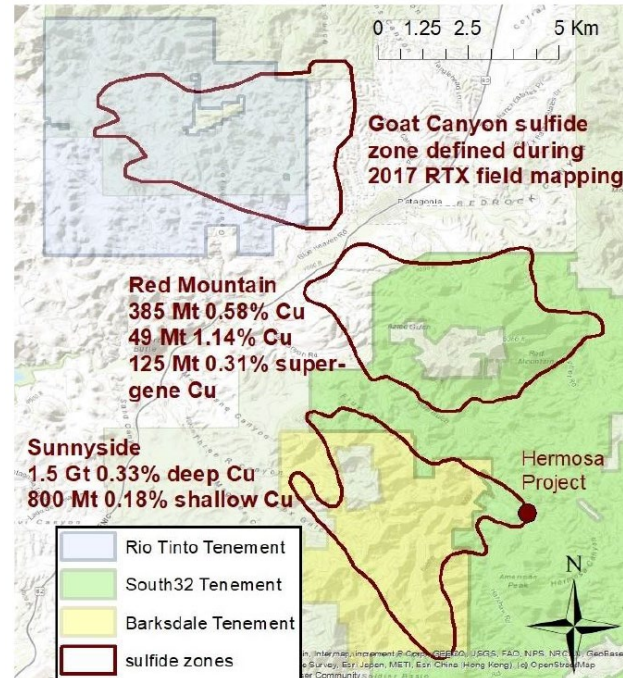
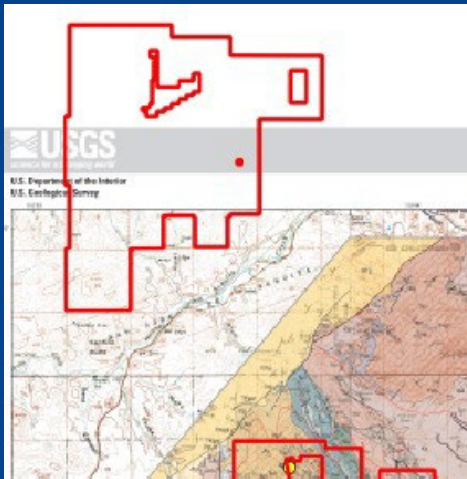
- Breccia pipes and buried porphyry-style mineralization
- 40 unpatented claims, 760 acres

### GUAJOLOTE – 100%

- Patented mining claim

# GOAT CANYON

- Former Kennecott/Rio Tinto property
- Early-stage Cu-Mo porphyry target
- Ground and Airborne Geophysical Surveys: IP - Mag and Radiometric
- Bear Creek completed 2 core holes in 1968
- 430 federal mining claims, 2 ASLD leases



- Geologic mapping at 1:5,000
- ArcGIS and ArcPro workspaces
- Internal reports
- Geochemistry
- 468 51-element soil assays
- 104 51-element rock chip assays
- 8 U-Pb age dates and zircon fertility analysis
- 160 ASD scans
- Geophysics
- 2018 airborne mag survey
- 2018 airborne radiometric survey (K-U-Th)
- New inversion of historic IP data
- Historic Bear Creek Mining Co. Drilling Data
- Strip logs
- Skeleton core from two holes available



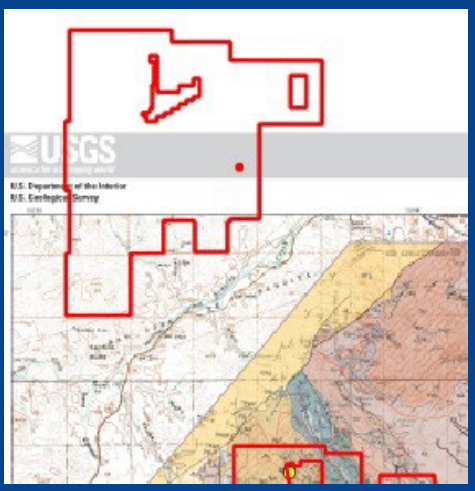
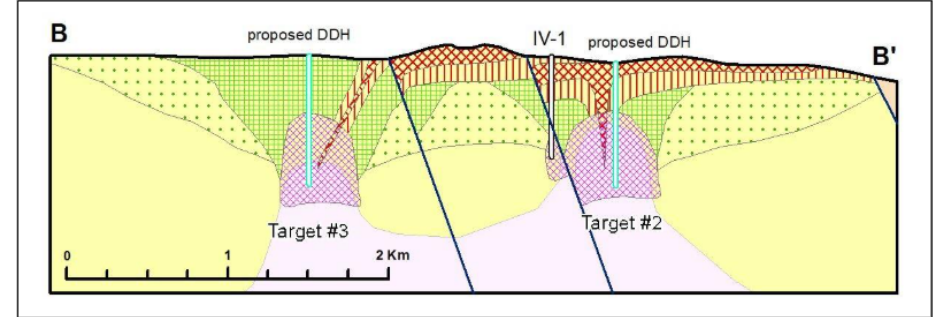
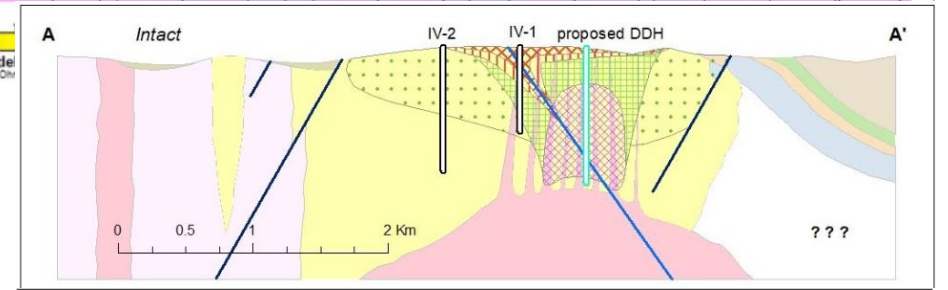
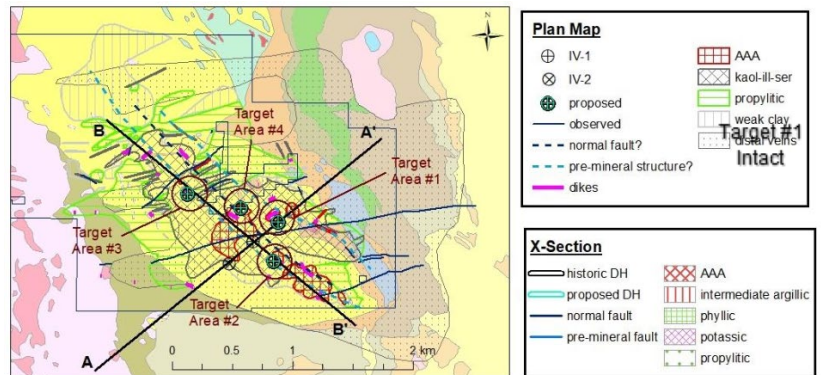
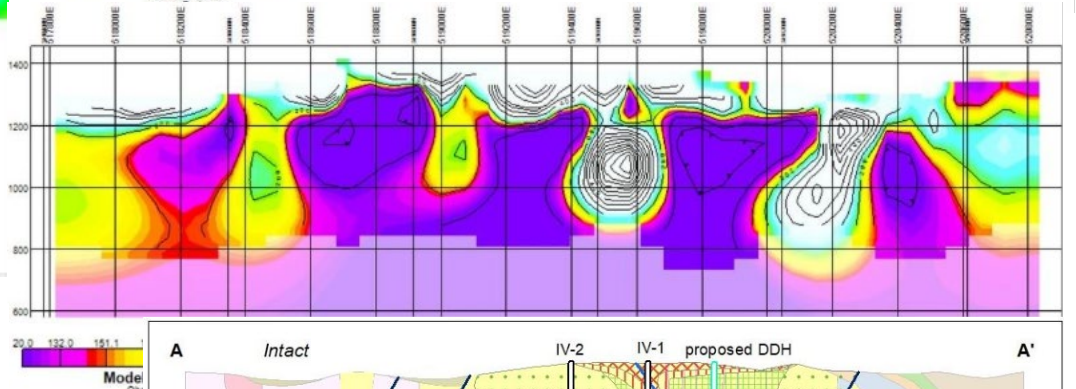
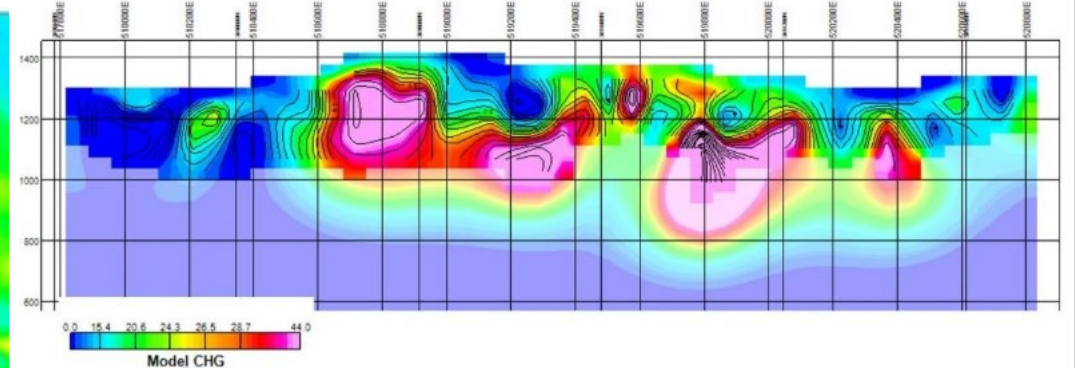
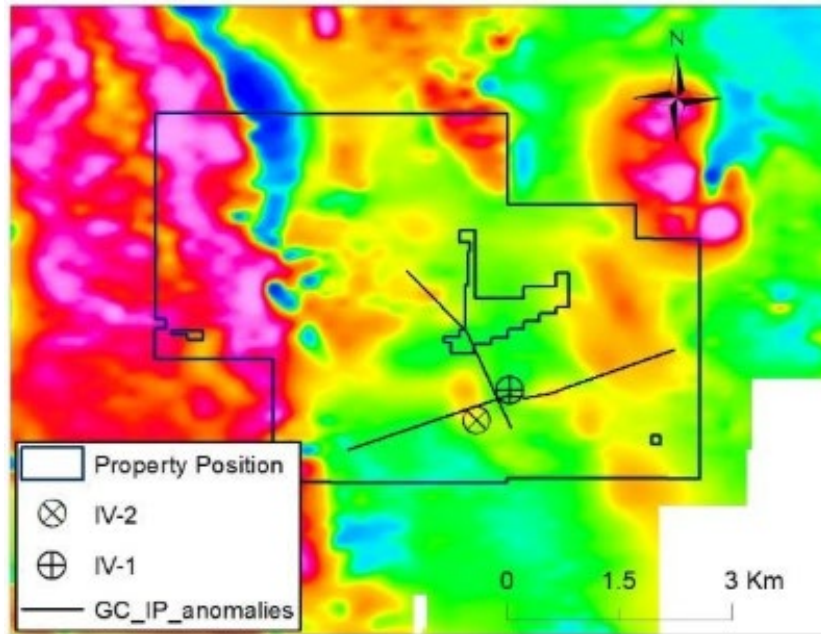
Core photos from historic IV-1 drill hole. A: FeOx zone with advanced argillic alteration; B: Transition AA -> PHY alteration with trace chalcocite and 6-7% pyrite; C: QSP vein; D: A and B veins with chalcopyrite, bornite and molybdenite.



A. Alunite veins, B. Qtz-hem-oxpy-alunite-pyrophyllite, C. sheeted qtz-oxpy-ser veins in massive kaolinitized Jurassic granite

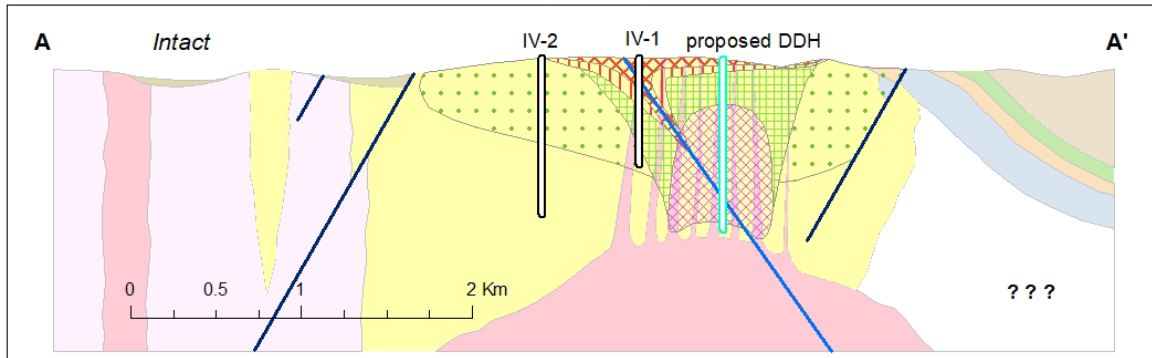
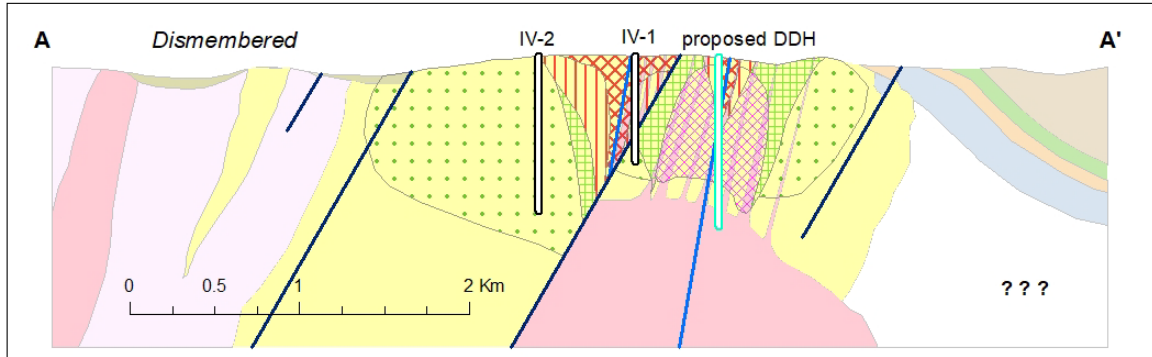
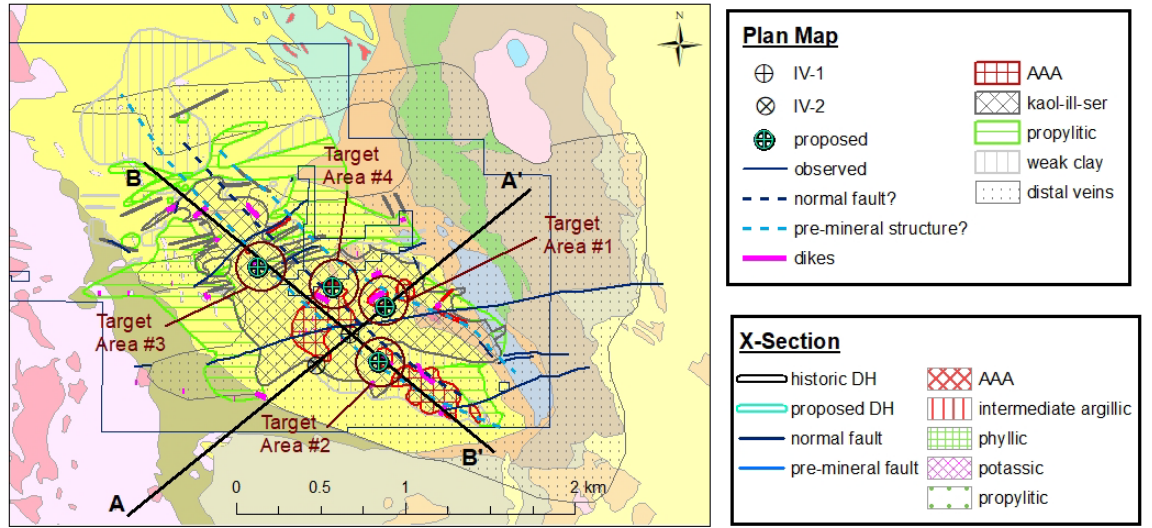
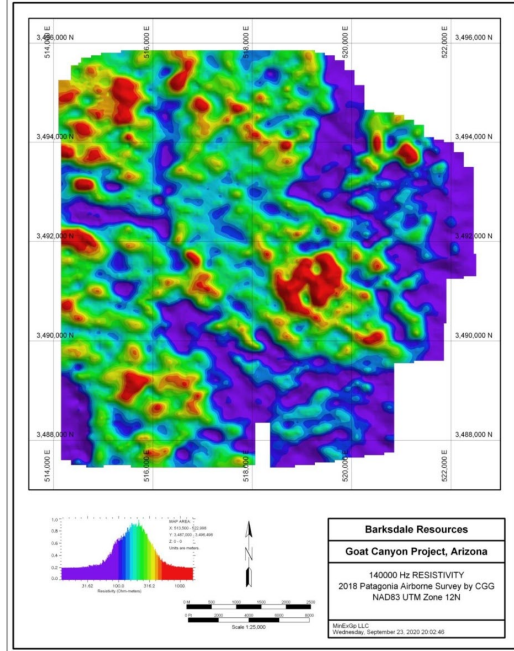
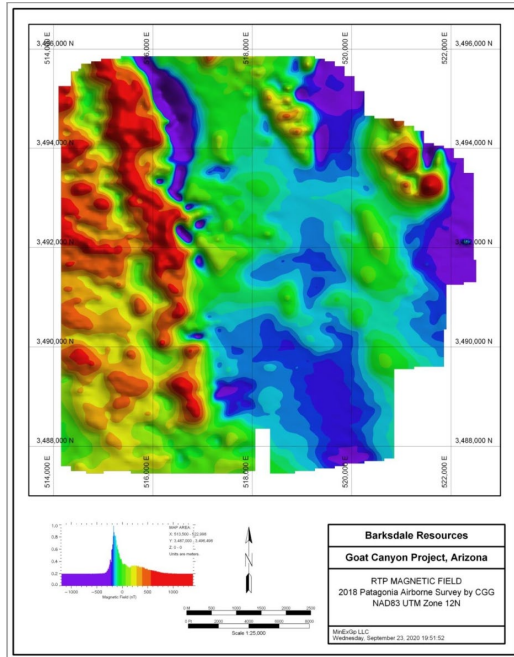
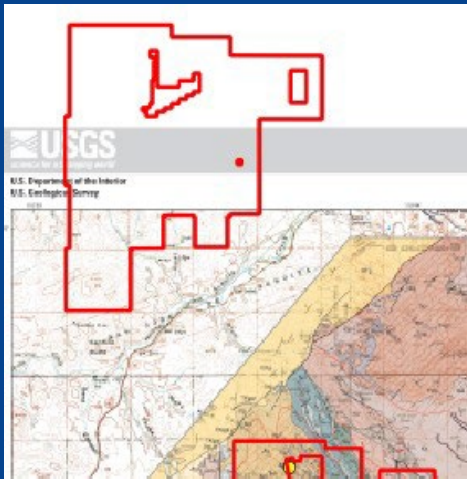
# GOAT CANYON

- Former Kennecott/Rio Tinto property
- Early-stage Cu-Mo porphyry target
- Ground and Airborne Geophysical Surveys: IP - Mag and Radiometric
- Bear Creek completed 2 core holes in 1968



# GOAT CANYON

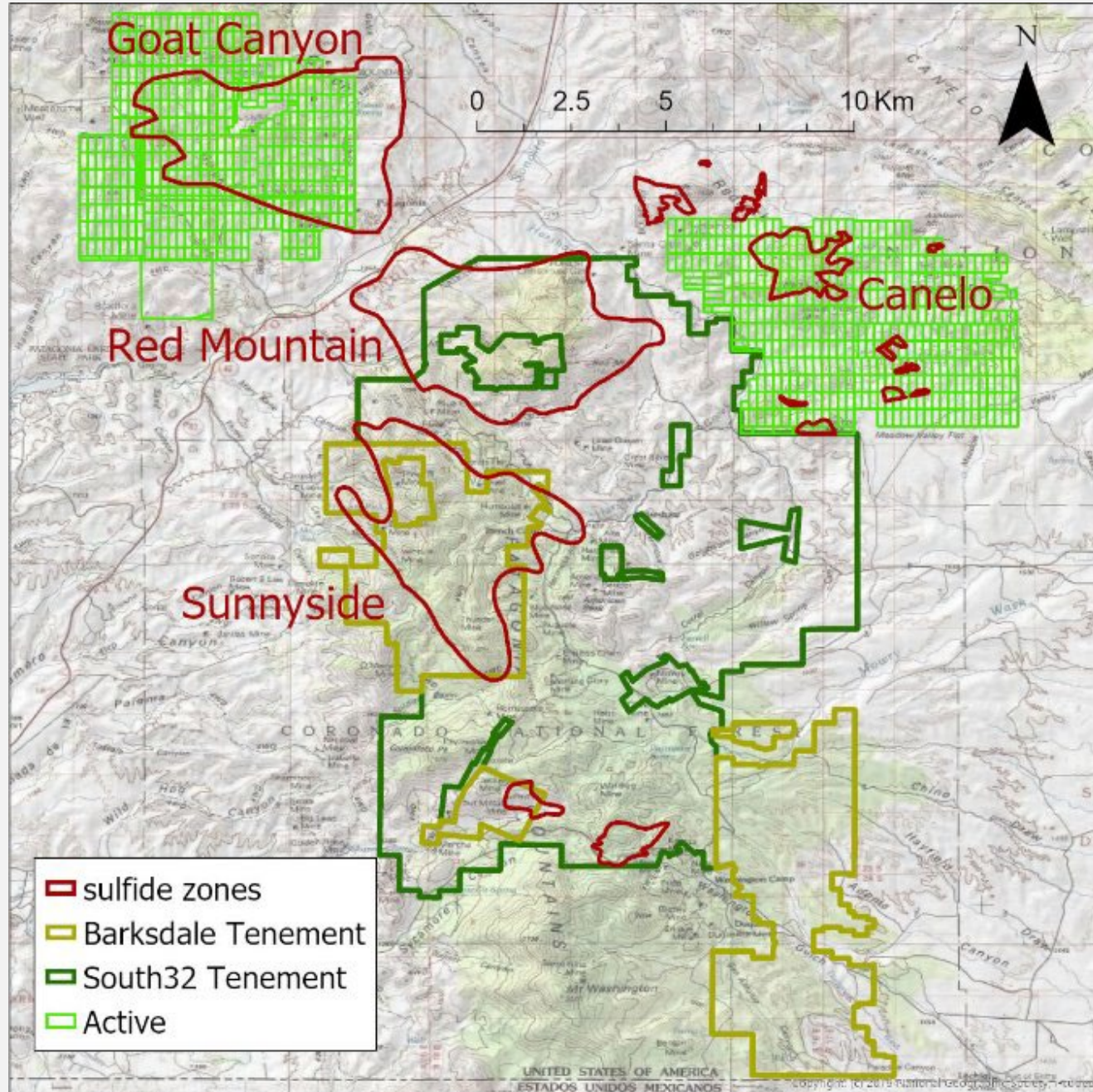
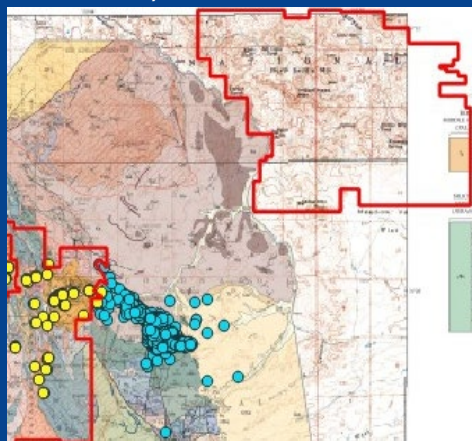
- Former Kennecott/Rio Tinto property
- Early-stage Cu-Mo porphyry target
- Ground and Airborne Geophysical Surveys: IP - Mag and Radiometric
- Bear Creek completed 2 core holes in 1968



# CANELO

## Location and Land

- Canelo is a Cu-Mo porphyry system exploration target
- The current property position consists 433 unpatented lode claims
- The Patagonia District has a metal endowment of ~10 Mt Cu (Vikre, 2014).



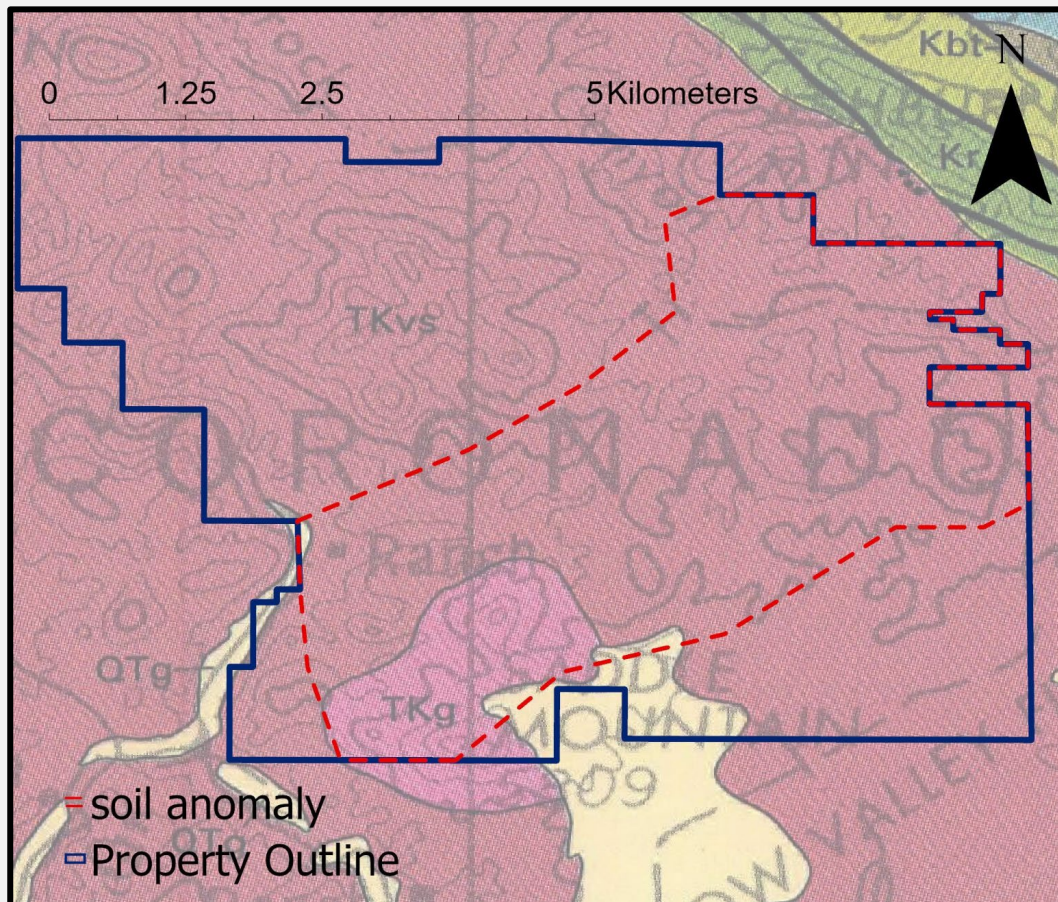
Canelo Project, Patagonia Mining District, Santa Cruz Co., Arizona; Rio Tinto, 2017

# CANELO

## Geology

## Geochemistry

- Laramide monzonite and andesite host rocks, with the potential for carbonates at depth
- Large 3 x 6 km soil anomaly averaging 200 ppm Cu, 80 ppm Pb, and 185 ppm Zn
- alunite-illite-kaolinite-sericite alteration and numerous silicified ribs that represent the eroded remnants of a lithocap
- Numerous large strongly silicified breccia bodies and Cu oxides

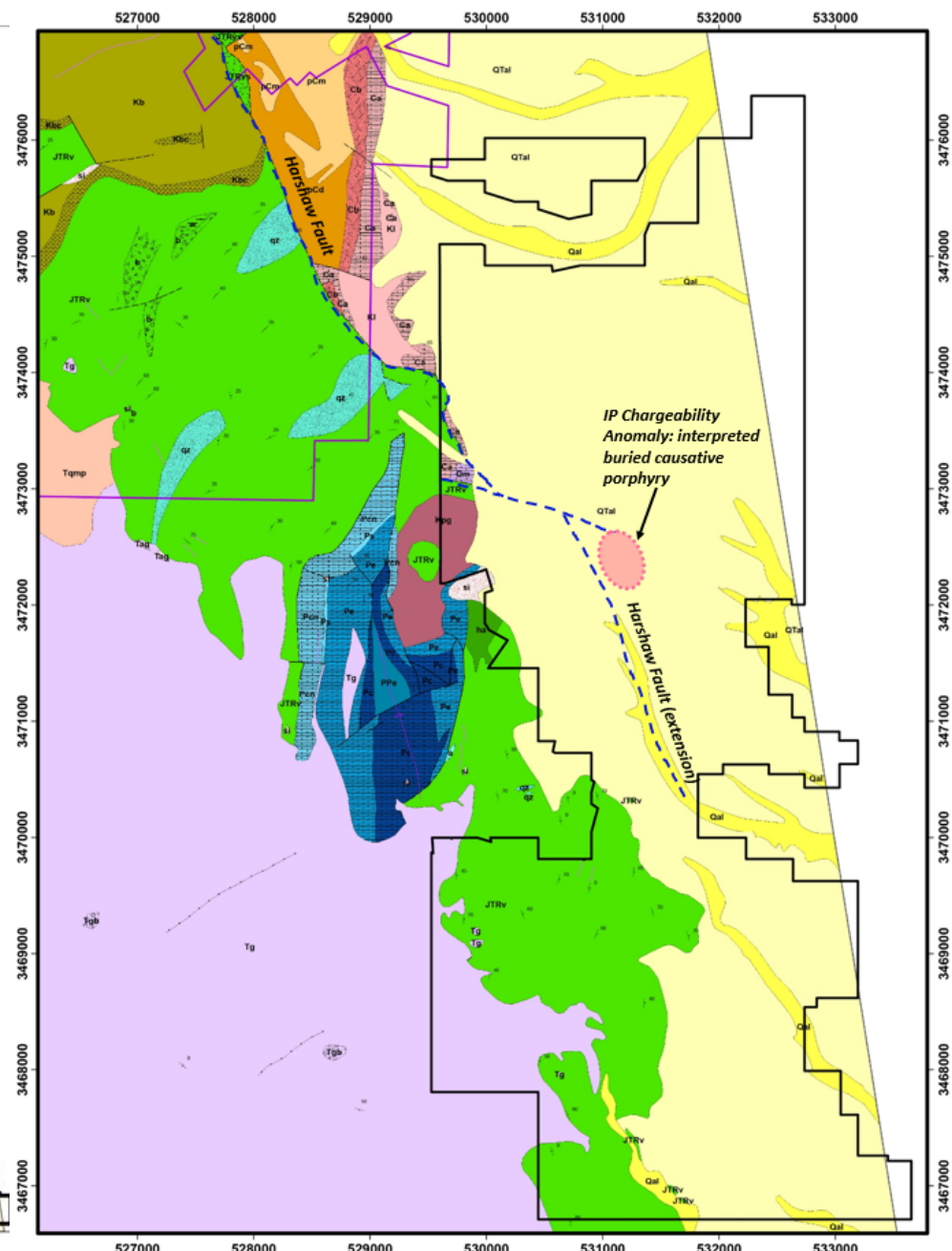
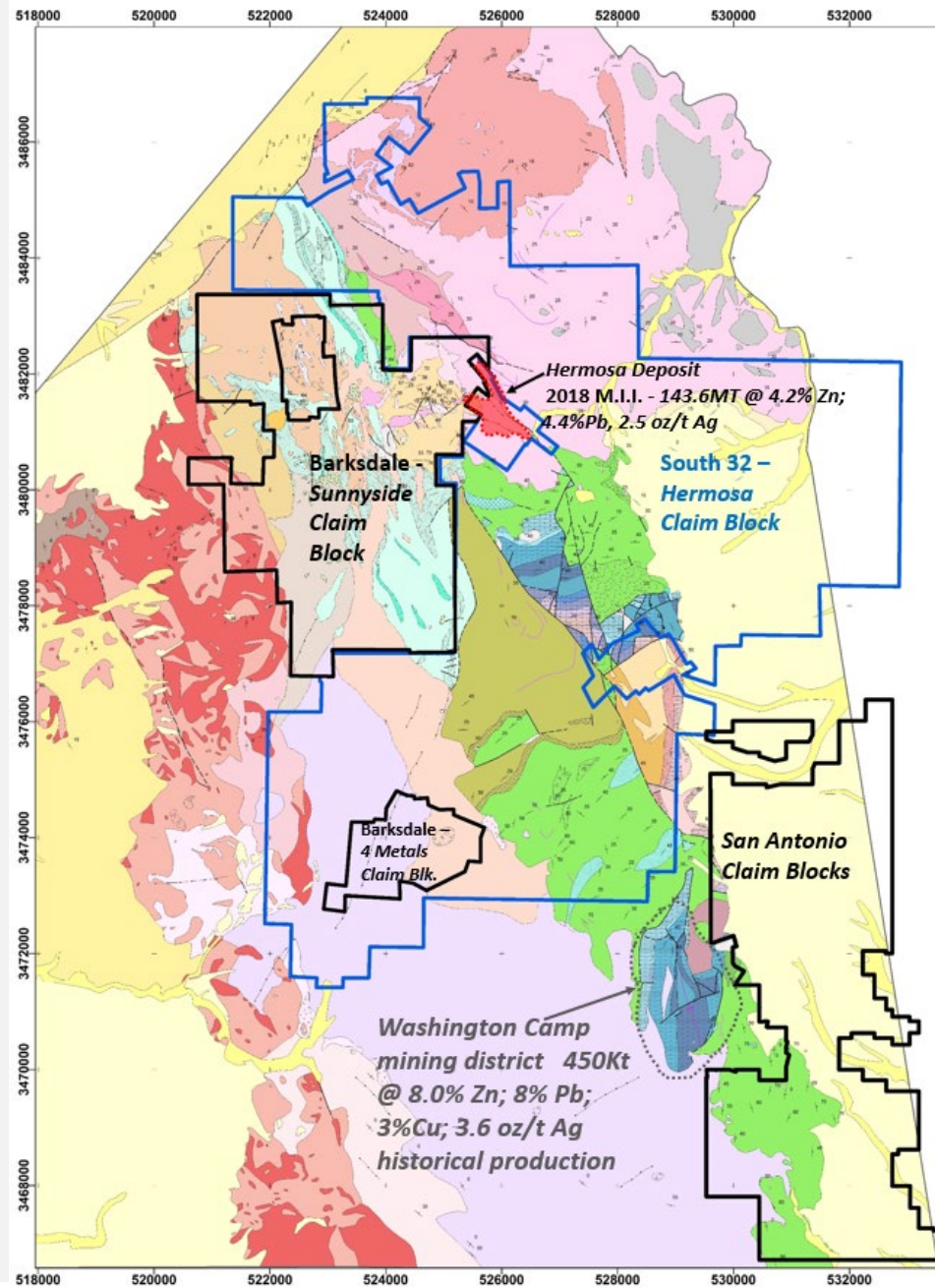
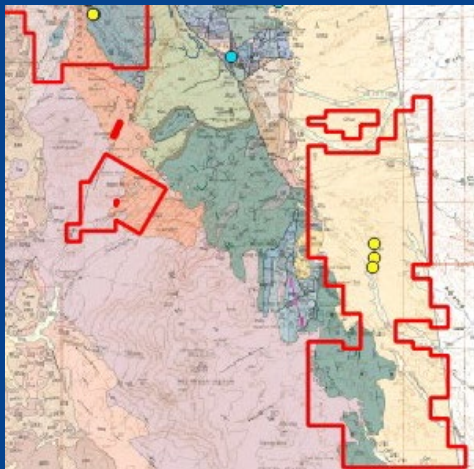


(A) Alunite veins in silicified-illite-sericite altered andesite; (B and C) Stockwork A veins with chalcopyrite and Cu oxide from nearby Meadow Valley Mine (D) quartz veins in silicified and kaolinite-altered andesite; (E) Fe oxide in breccia



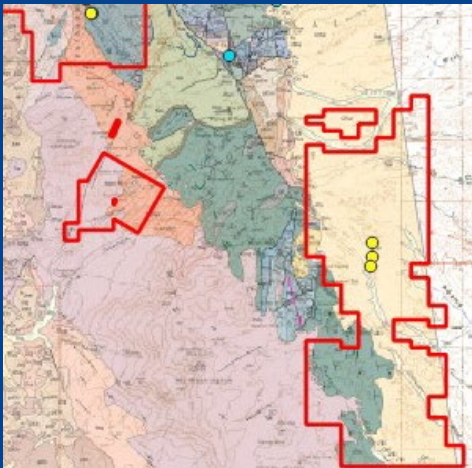
# SAN ANTONIO

- Southern ext. of Harshaw Creek fault system
- Copper Porphyry style system
- Teck retains a 1.5% NSR and FROR
- 351 unpatented claims, 6,313 acres
- USFS Drill Permitted

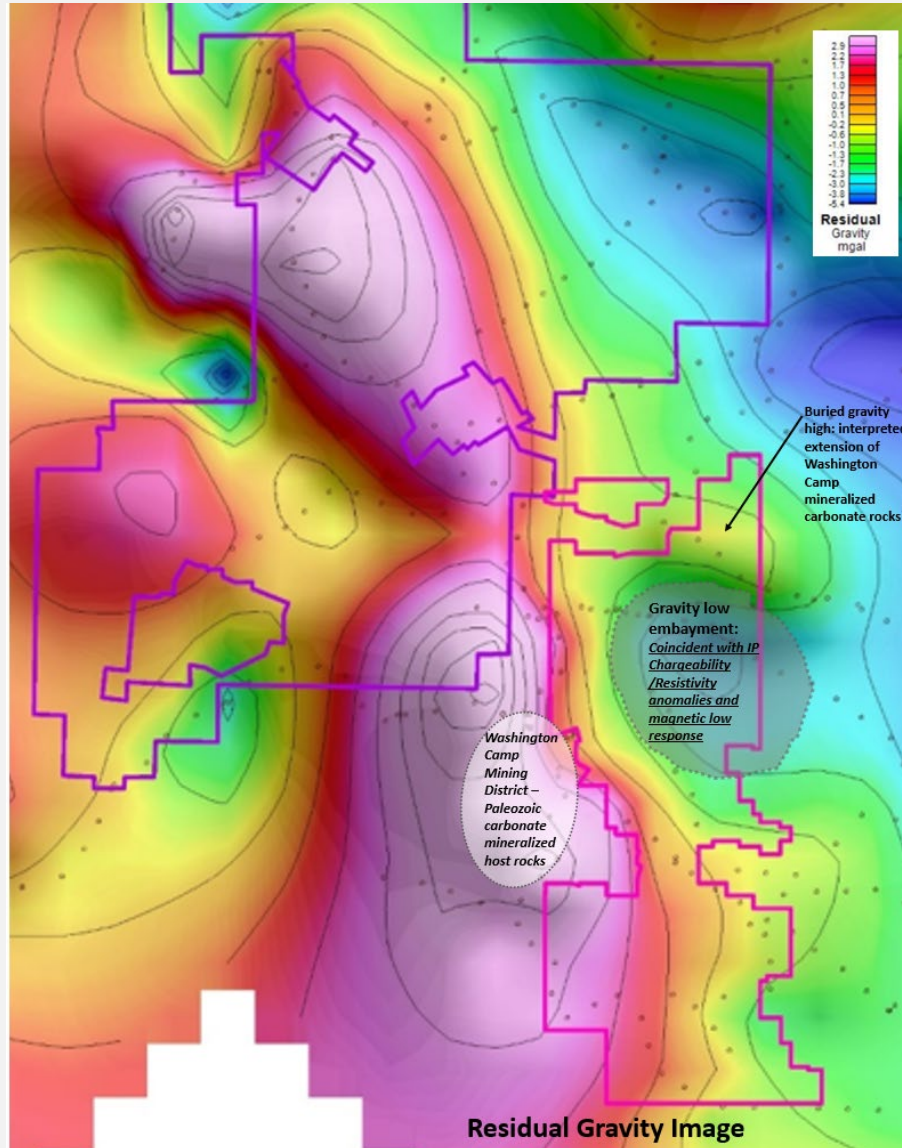


# SAN ANTONIO

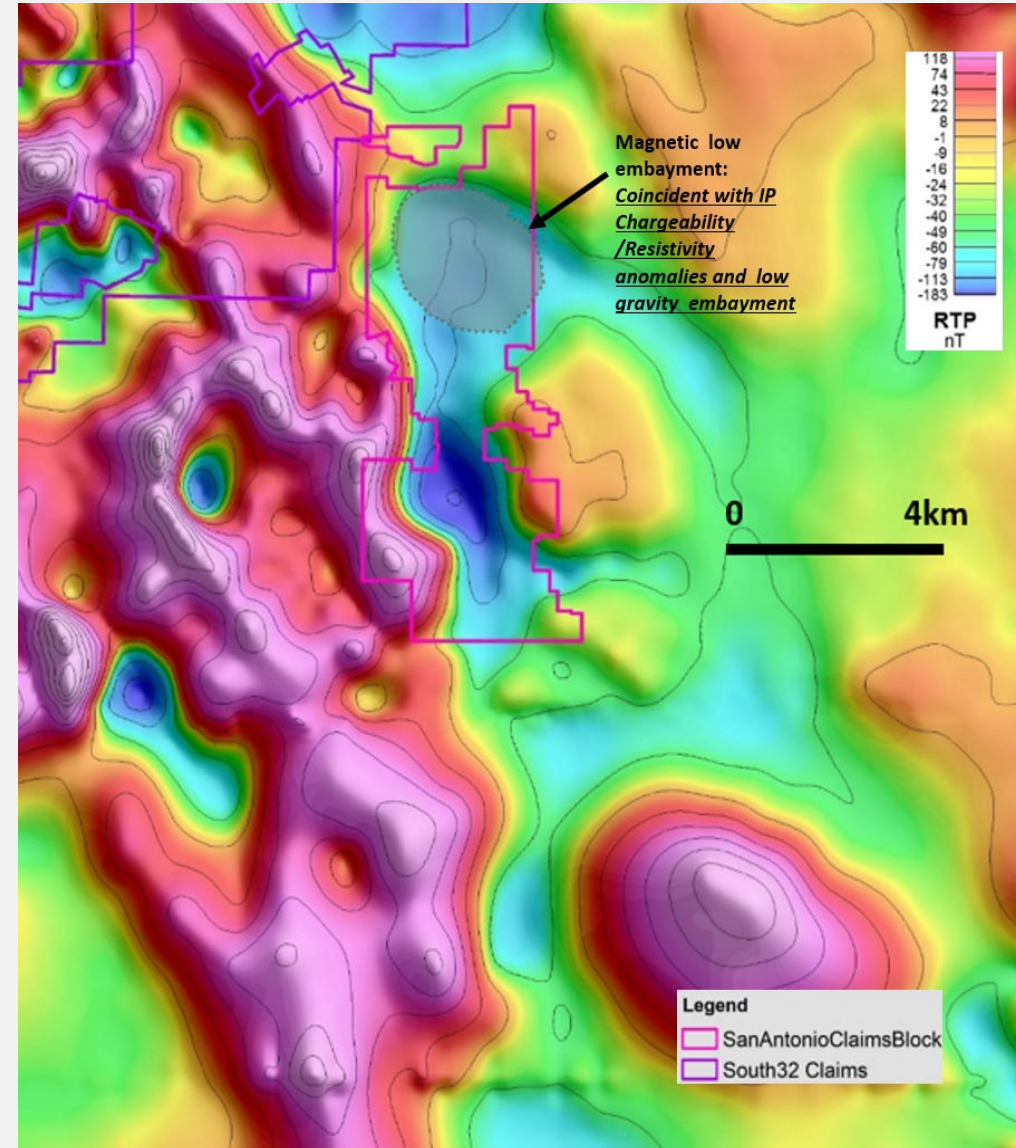
- Southern ext. of Harshaw Creek fault system
- Copper Porphyry style system
- Teck retains a 1.5% NSR and FROR
- 315 unpatented claims, 6,300 acres
- USFS Drill Permitted



## Gravity Survey

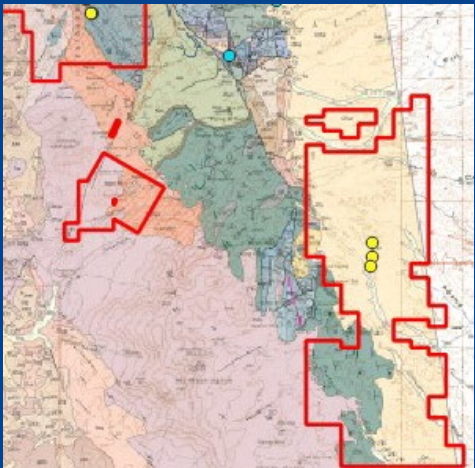


## Magnetic Survey

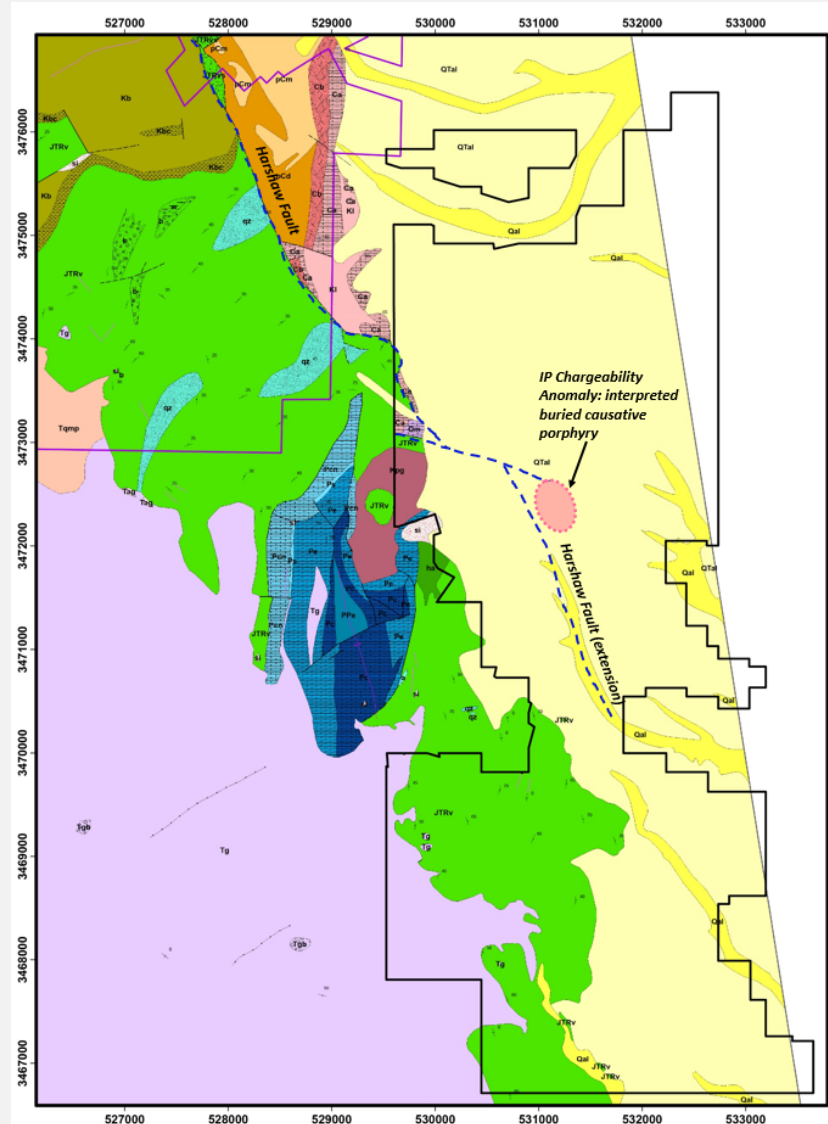


# SAN ANTONIO

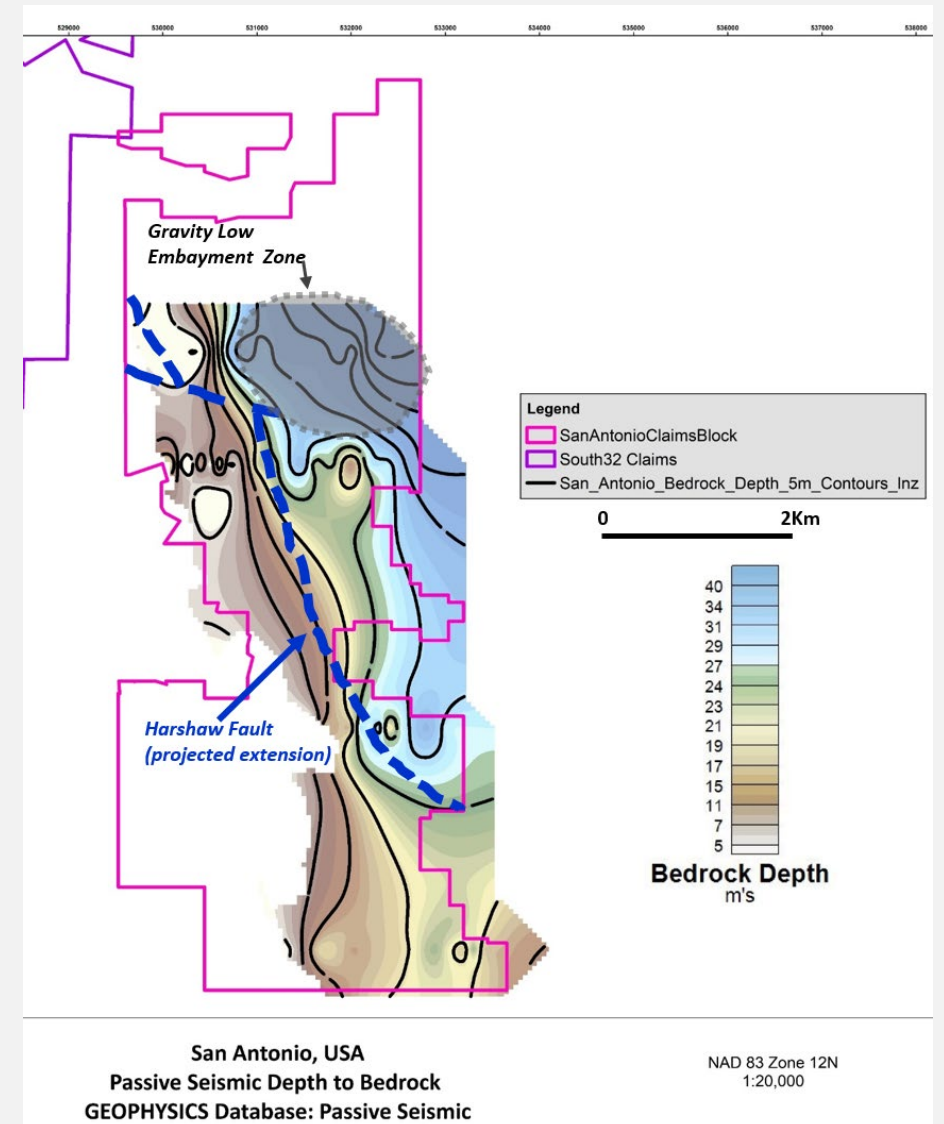
- USFS Drill Permitted
- Three holes drilled to test for the down-dropped Paleozoic sediments coincident with geophysical anomalies
- Never hit bedrock
- Follow-up drilling contemplates targets to the west



## IP Resistivity Survey

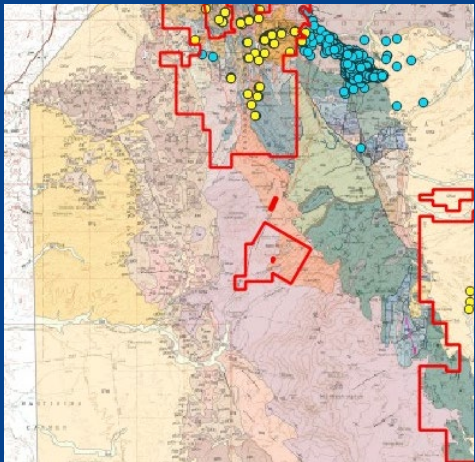


## Passive Seismic Depth-to-Bedrock



# FOUR METALS

- Breccia pipes and buried Cu porphyry-style mineralization
- Selective exploration and mining 1860-1925
- Explored 1952-Present
- 40 unpatented claims, 760 acres

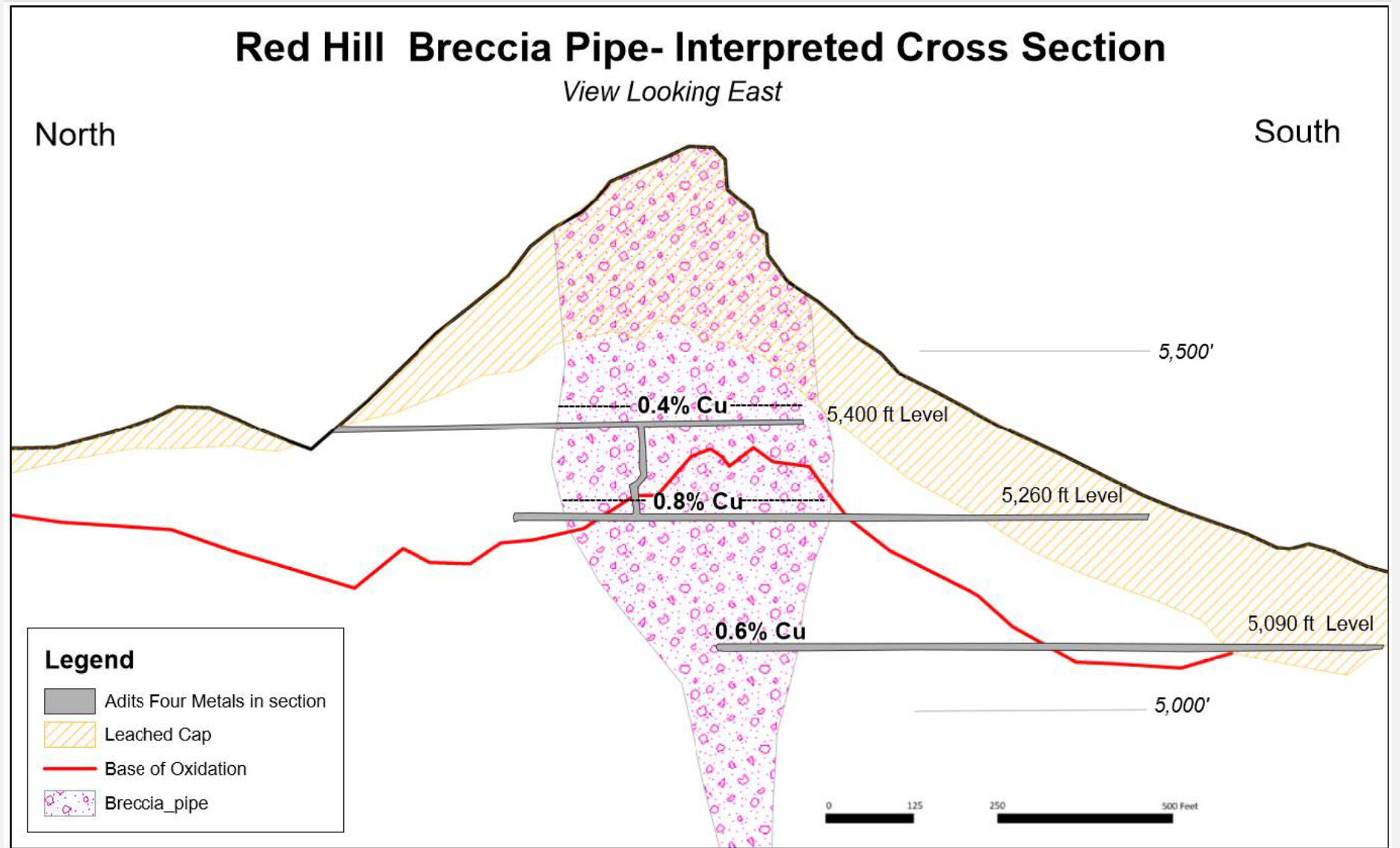
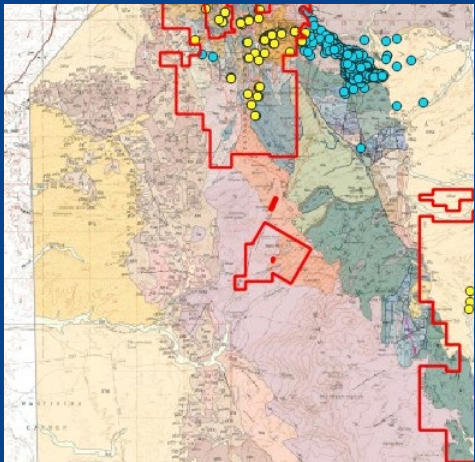


RED HILL BRECCIA PIPE

# FOUR METALS

OZ Minerals drill results;

- 30.0' @ 0.55% Cu
- 10.0' @ 0.64% Cu
- 10.0' @ 0.47% Cu
- 29.1' @ 1.24% Cu
- 24' @ 0.77% Cu



Cross section of the Red Hill breccia pipe / Four Metals showing vertical grade ranges of Cu by underground levels (modified after Jenny, 1969).

# **SUPPLEMENTAL INFORMATION**

# ARIZONA OPTION AGREEMENT

- Barksdale completed the Phase I earn-in requirement to secure 51% of the Sunnyside project.
- Barksdale has elected to pursue the 67 ½% by drilling 25,000 feet and making contracted payment to Great Basin.

Period	C\$ Cash	Exploration Requirement (C\$)	Drilling Footage	Number of Shares	
On execution of agreement	✓ \$750,000 (paid)			✓ 1,250,000 (issued)	} 51%
On or before end of Year 1*	✓ \$1,200,000 (paid)	✓ \$3,000,000 (Incurred PI)		✓ 3,850,000 (issued)	
On or before end of Year 2	✓ \$1,000,000 (paid)	✓ \$3,000,000 (Incurred PI)	✓ 25,000 feet (completed)	✓ 5,000,000 (issued)	} 67.5%
On or before end of Year 3	-	✓ \$3,000,000 (Incurred PI)		-	
On or before end of Year 4	\$550,000	✓ \$3,000,000 (Incurred PI)	25,000 feet	4,900,000	
<b>Total:</b>	<b>C\$3,500,000</b>	<b>C\$12,000,000</b>		<b>15,000,000</b>	

\*Year 1 began on September 8, 2023

# BARKSDALE DRILL PROGRAM RESULTS

## SUN-003

- 10.21m Cu, Zn+Pb, Ag and 98.55 ppm Sb
- 15.24m Cu, Zn+Pb, Ag and 71.64 ppm Sb
- 9.14 m 0.16% Cu, 1.30% Zn+Pb, 246 g/t Ag and 85.59 ppm Sb.

## SUN-003

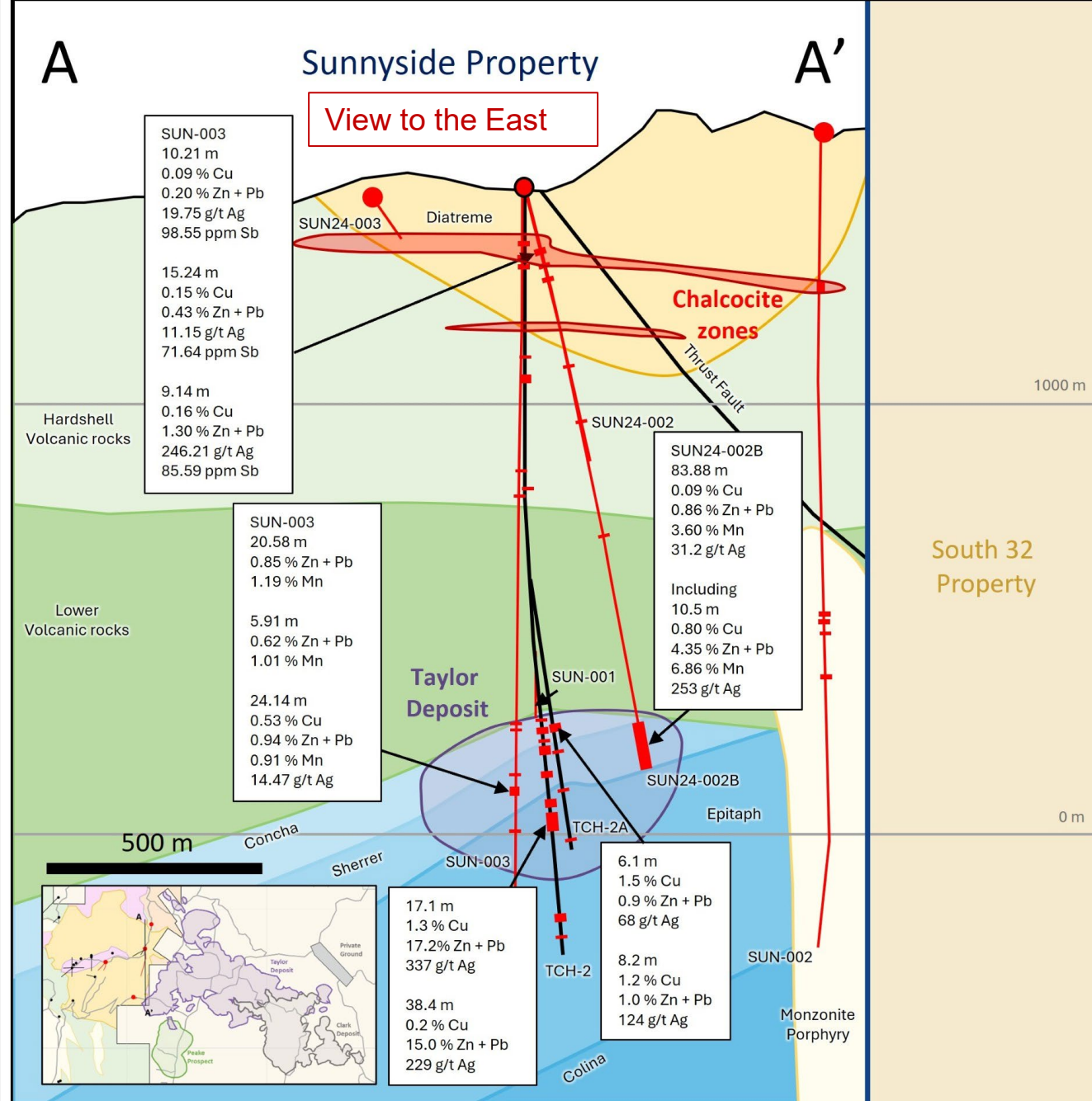
- 20.58m 0.85% Zn+Pb, 1.19% Mn
- 24.14m 0.53% Cu, 0.94% Zn+Pb, 0.91% Mn

## SUN24-002B

- 83.88m 0.09% Cu, 0.86% Zn+Pb, 3.60% Mn 31.2 g/t Ag

## including

- 10.5m 0.80% Cu, 4.35% Zn+Pb, 6.86% Mn and 253 g/t Ag



# ONE SYSTEM, MULTIPLE DISCOVERIES

## SUNNYSIDE TARGETS

CHALCOCITE MANTO

UPPER PORPHYRY

SUNNYSIDE PORPHYRY

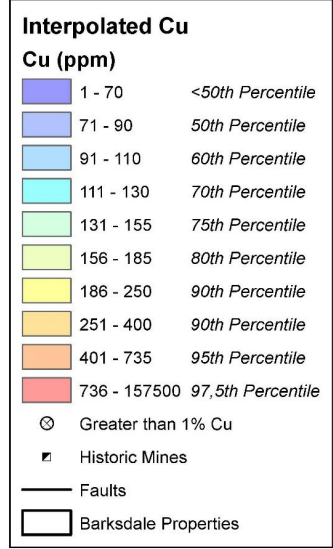
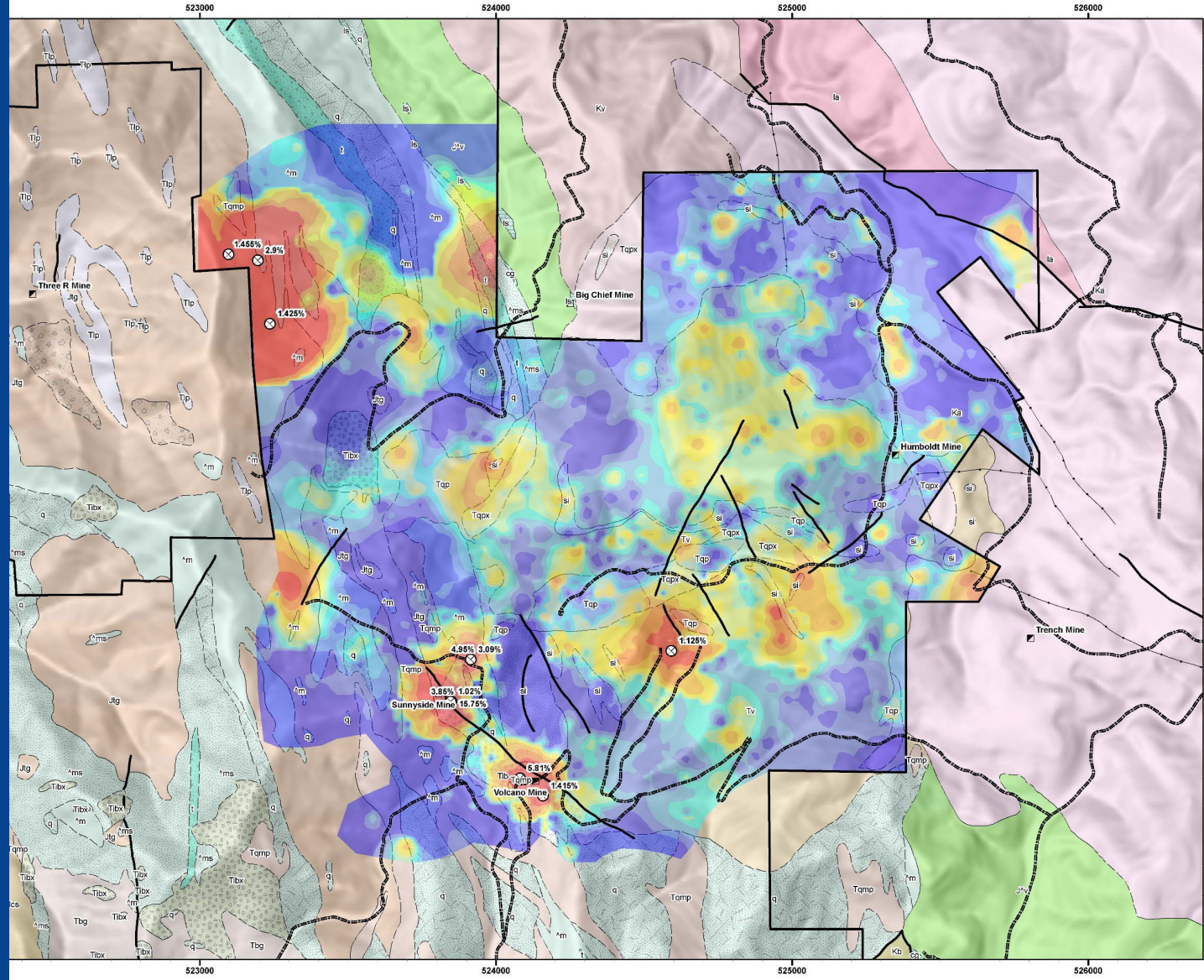
PEAKE EXTENSION

TAYLOR EXTENSION

Notes: Initial drilling at Sunnyside prior to Barksdale Resources was completed before the implementation of NI 43-101 standards and has not been verified by a "qualified person" and therefore should not be relied upon. Intercepts are presented to provide an indication of the possible mineralization within the Sunnyside property.

# PHASE II TARGETS (Current)

## FRACTURE STUDY COPPER TARGETS



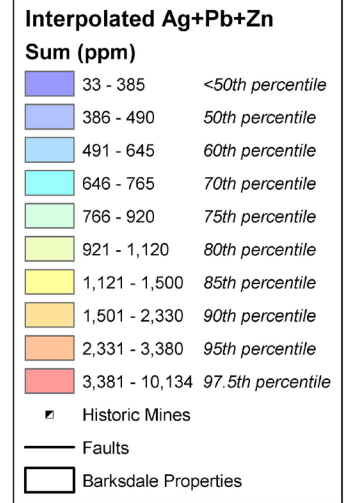
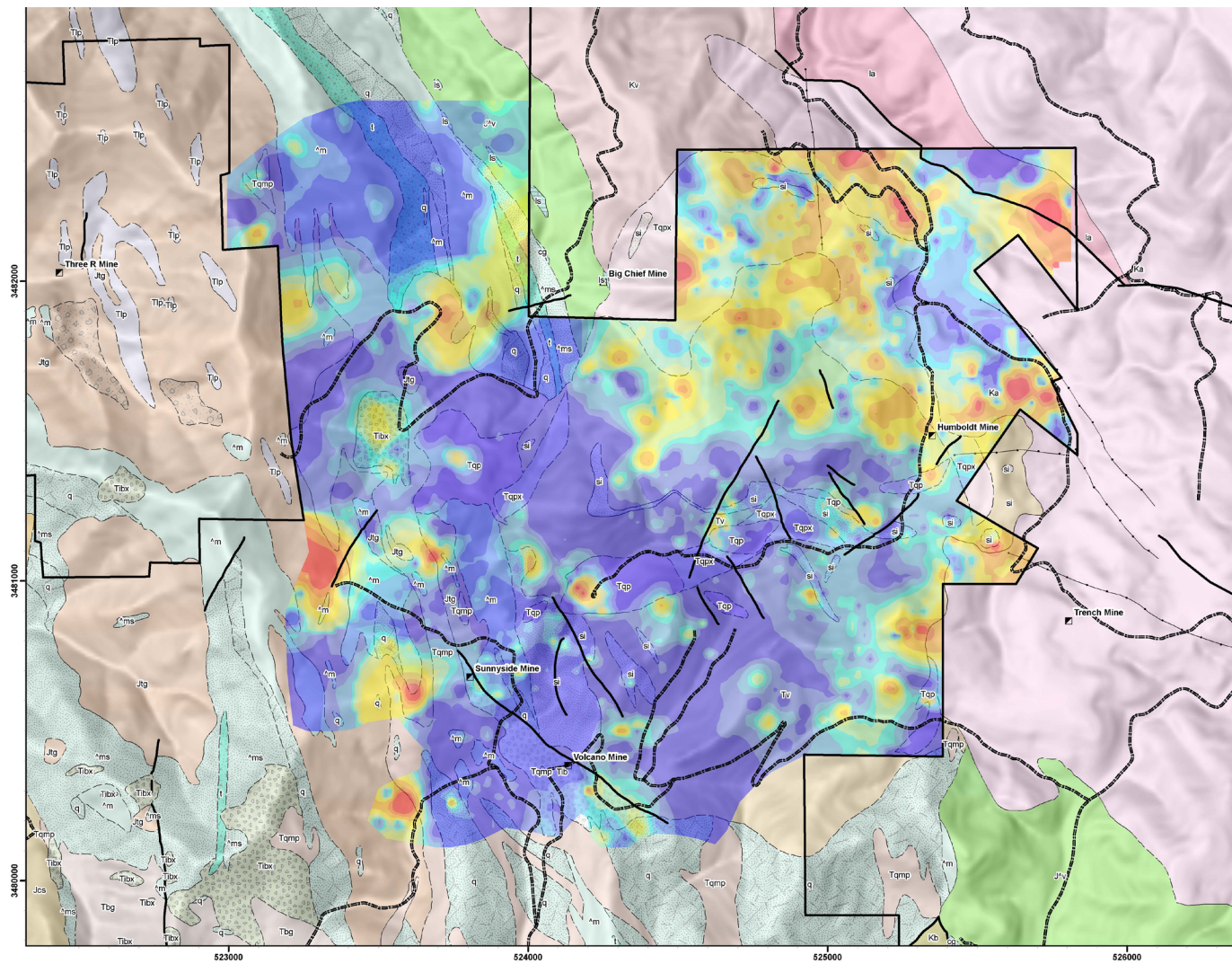
Coordinate System: NAD 1927 UTM Zone 12N  
 Projection: Transverse Mercator  
 Datum: North American 1927  
 Units: Meter

1:10,000  
 1 inch = 833.33 feet  
 1 cm = 100 meters



# PHASE II TARGETS

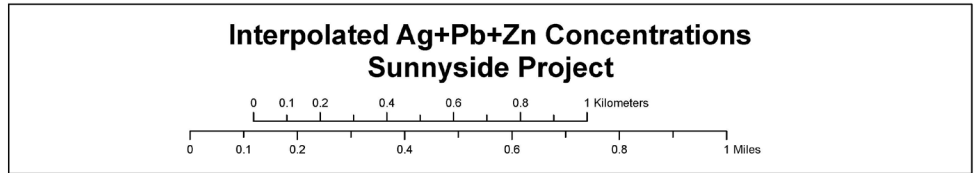
## Ag+Pb+Zn



**BARKSDALE**  
CAPITAL CORP.



Prepared by:  
Big Rock Exploration  
Date: 1/25/2019



Coordinate System: NAD 1927 UTM Zone 12N  
Projection: Transverse Mercator  
Datum: North American 1927  
Units: Meter

1:10,000  
1 inch = 833.33 feet  
1 cm = 100 meters

